

# *The Glenfarg Newsletter*



Issue 250 September 2021

Suggested Donation £1

## Contents

Editorial.....	3
Contacts.....	4
Village Hall Groups.....	6
Arngask Church News .....	8
GOBS 10th birthday.....	12
Community Centre Update.....	14
Scouts in Schoolhouse Garden....	16
Scouts Paddleboarding .....	17
Scouts Overnight Hike .....	20
Letter from Australia .....	22
Friends of Wallace Park.....	24
Glenfarg Community Cinema....	26
G&D In Bloom Wildflowers.....	30
G&D In Bloom.....	32
Pub in the Park .....	34
Improving Broadband.....	38
SWI.....	45
Community Council Minutes.....	47
Index Of Advertisers.....	67
General Information.....	68

## Advertise In The Glenfarg Newsletter

You can advertise in the Newsletter for very reasonable rates as below which are annual i.e. 4 issues.

Full Page £70 per annum

Half Page £35

Quarter Page £20

Single issue advert prices available on request.

Advert enquiries should be made by initially contacting the editorial team.

### Editor

Robin Watson 830 355  
newsletter@glenfarg.org

### Treasurer

Daniel Horsman 830 067

### Distribution

Glenfarg Village Store 830 823

### Front Cover Editor

The views expressed by contributors to this newsletter are entirely their own. Publication within this newsletter does not imply that the Editors or Community Council agrees with, or supports, those views. The editor will not be held responsible for any factual inaccuracies, or incorrect inferences drawn.

Advertisements in the Newsletter are accepted in good faith. The Community Council and the editor are not in any way endorsing the businesses advertised in this publication.

### DEADLINE FOR NEXT ISSUE

If you want to contribute to the Newsletter here is how to calculate the deadline. It is published on the 1st March, 1st June, 1st September and 1st December. Copy should be submitted before the 15th of the month prior to the upcoming publication.

email to [newsletter@glenfarg.org](mailto:newsletter@glenfarg.org)



# Editorial

The last months of lockdown have once again seen residents rallying round to help each other. Now, with Covid restrictions easing, it's great to be able to report on some social events taking place once more.

People are starting to meet again in the open air. So, what a great idea to take advantage of the good weather and have a pop-up pub in Wallace Park. See Page 24 for some wonderful photographs. And of course you will have seen mine host Steve on the front cover.

If you went to the pub, you will no doubt have walked along the new path which was opened just in time for the event. I hope that everyone is enjoying being able to use this path, thanks to the hard work of the Friends of Wallace Park group. Read the story on Page 24.

Glenfarg and Duncricvie In Bloom have also been able to invite people to take part in their activities. The wildflower project is bringing butterflies and bees to an area that used to be neglected. See Page 30 to learn about some of the wildlife that has been spotted there.

Volunteers and Scouts have also been out working in the schoolhouse garden. What a transformation! We now have a fence and a gate, and I see that the grass-seed is already producing a luscious lawn. Go to Page 14 to read about the project.

After all their hard work on this project, the Scouts had the opportunity to enjoy themselves - paddleboarding at Willowgate in Perth and hiking overnight to the summit of Ben Cleuch. The stories and photos are on Pages 17 and 20.

Finally, a couple of things to look forward to. The Community Cinema starts up again with a film, Fisherman's Friends (Page 26) and the SWI has a new programme (Page 45).

And . . . don't miss the Letter from Australia on Page 22.  
That should bring back memories for some of you.



Robin Watson

e-mail: [newsletter@glenfarg.org](mailto:newsletter@glenfarg.org)

# Contacts

Service/Organisation	Contact Name/ Email Address	Telephone
<b>Community Council</b>	Chairperson: Margaret Ponton	830 611
	Secretary: Ian Pilmer secretary@glenfarg.org	830 817
<b>P&amp;K Councillor</b>	Cllrs. Barnacle, Watters, Purves and Robertson	See P&KC website
<b>Police</b>	Non emergency contact number	101
	Crimestoppers	0800 555 111
<b>Household Utilities</b>	Scottish Water Helpline	0800 0778 778
	Scottish Hydro Electric Helpline	0800 300 999
<b>Dog Warden</b>	Kirsteen Mackenzie	01738 476476
<b>PA Contact</b>	Mark Crossey	830 201
<b>Arngask Church</b>	Joyce White (Session Clerk) Session.Clerk@ada-church.org.uk	01738 850754
<b>Arngask School</b>	Suzanne Miller (Head Teacher)	867 250
<b>Accordion &amp; Fiddle</b>	Stewart Smith isobelsmith45@btinternet.com	830 6296
<b>Baby &amp; Toddlers</b>	Catherine Mason catherinemason@hotmail.co.uk	07583 022 608
<b>Badminton Club</b>	Alan Clark	830 246
<b>Beavers</b>	Christine Morton	830 210
<b>Bowling Club</b>	Karen Parker glenfargbc@gmail.com	830 529
<b>Bridge Club</b>	Evelyn Brockbank	830 713
<b>Brownies</b>	Jan Pedley glenfargbrownies@gmail.com	830 195

<b>Service/Organisation</b>	<b>Contact Name/ Email Address</b>	<b>Telephone</b>
<b>Chair Yoga</b>	Caroline Waring	830 239
<b>Cubs</b>	Michael Mchardy mike_mchardy_kp@hotmail.com	07847 112281
<b>Curling - Men's</b>	Lorne Findlay	830 441
<b>Curling - Women's</b>	Margaret Jenkins	830 453
<b>Folk Club</b>	Philip Ponton info@glenfargfolkclub.com	830 611
<b>GDIB</b>	Kate Armstrong	830 343
<b>Community Cinema</b>	Janet Watson	830 355
<b>Glenfarg Oil Buying Syndicate</b>	Tom McAulay gobs@glenfarg.org	07786 705261
<b>Knit &amp; Natter</b>	Ineke Watt	830 345
<b>Neighbourhood Watch</b>	Linsey Penman	830 549
<b>Old Folks Association</b>	Philip Ponton	830 611
<b>Riding School</b>	Angela Stocks	830 262
<b>Scouts</b>	Robert Morton robert.morton1@tesco.net	830 210
<b>SWI</b>	Margaret Scott	830 369
<b>Tennis Club</b>	Tim Corcoran tim@taraw.plus.com	830 879
<b>Total Body Circuit</b>	Julie Ramsay jrinsanity@gmail.com	830 370
<b>Village Hall</b>	Isla Craig glenfargvillagehallbookings@gmail.com	830 125
<b>Website</b>	Janet Watson <i>editor@glenfarg.org</i>	830 355
<b>Wine Club</b>	David Aird	830 370
<b>Zumba</b>	Gale Paterson	07823 334 476

# A Village Hall for All

Day	Time	Organisation
Monday	9.30am - 11.30am	<b>Baby &amp; Toddler Group</b>
	6.00pm - 7.30pm	<b>Cubs</b>
	8.00pm - 10.00pm	<b>Ladies' Badminton</b>
	7.30pm - 9pm 1st Monday every other month	<b>CC Meeting</b>
Tuesday	9.30am - 10am	<b>Metafit</b>
	5.45pm - 6.45pm	<b>Beavers</b>
	7.30pm - 9.00pm	<b>Scouts</b>
Wednesday	6.00pm - 7.30pm	<b>Brownies</b>
	8.00pm - 10.00pm In winter	<b>Mixed Badminton</b>
	7.00pm - 11.00pm 1st Wednesday of month	<b>Accordion &amp; Fiddle Club</b>
Thursday	10am - 12 noon	<b>Coffee Morning</b>
	7.30pm 2nd Thursday Sept to May	<b>WRI</b>
Friday	10.00am - 11.00am	<b>Chair Exercise</b>
	7.30pm - 10.00pm 2nd Friday Sept to April	<b>Community Cinema</b>

To check on the Village Hall bookings, go to the village website  
[www.glenfarg.org](http://www.glenfarg.org)  
 and look at the on-line calendar under 'Hire the Hall'





# ***Earnside***

***U.K. & Continental  
Travel***

Tel: 01577 830360

E mail: [info@earnside.com](mailto:info@earnside.com)

Website: [www.earnside.com](http://www.earnside.com)

# Church News



Dear Friends,

As I was heading off to Church one unusually warm and sunny Sunday morning a couple of months ago, I was reminded of an unusual experience on the island of Bermuda. Although it is not widely known, there is actually a Church of Scotland congregation there who worship in a beautiful small kirk which is white on the outside and with white pews and walls in the interior. Christ Church was the first Church to be built on the island and claims to be the first Presbyterian church building in the entire New World. My Royal Naval warship, in which I served as Chaplain, was returning from a deployment in the Caribbean. But as the vessel came alongside, there was no chance that any of the ship's company could set foot on Bermudian soil. An unexpected outbreak of mumps soon put a stop to any ideas the sailors might have had of enjoying island night-life and they were confined to the ship. The only person the captain would allow to go down the gangway was yours truly. I am still unsure as to whether the captain thought I was immune from mumps in some way or just thought that the ship badly needed praying for, but I was set free to go off alone to the kirk. Surrounded by women in summer frocks and men in smart Bermuda shorts, we sang Scottish hymns to

Scottish hymn tunes in the bright sunshine and then had tea and coffee in the grounds outside. We could have been in Perthshire. The minister's wife was clearly disappointed not to see any sailors and obviously felt sorry for their plight. She disappeared for a time as she went over into the manse garden. When she returned, she was struggling under the weight of a big branch she had cut off from



one of the banana trees. She presented the huge amount of bananas to me with the words: "Take these back to the ship. They will be nice and soft to swallow if the sailors have sore throats from the mumps!" I thanked her kindly and duly did as I was bidden. But I didn't like to tell her that I imagined that their throats would be the one part of their anatomy which would be of least concern to the young men. When I returned to the ship, I was greeted with great interest. The sight of Rev Stan coming up the gangway with a huge branch of bananas over his shoulder caused much intrigue and hilarity.

Although nothing in comparison to the Covid pandemic, being relatively contained and innocuous as outbreaks go, one person was determined to show kindness and compassion amid a contagion. The minister's wife was reflecting the words on a plaque inside the small Bermudian church which went like this: "May God bless you. May you find forgiveness for the past, strength for the present, hope for the future and may God's peace and love go with you."

Although growing and distributing hand-reared bananas are not an option to us in Abernethy, Dron and Arngask Parish, even the smallest act of kindness to a stranger is always appreciated and sometimes, never forgotten.

Rev Stan

# Indoor Play

*Light and warm with a lovely café  
Supervised play available to allow  
parents to relax, work or workout*



*[www.treehouseandgym.co.uk](http://www.treehouseandgym.co.uk)*

*@treehouseandgym*

*[info@treehouseandgym.co.uk](mailto:info@treehouseandgym.co.uk)*

*1st Floor Jamesfield,  
Abernethy*



*Gym*



*Studio*

**LES MILLS**



## 2 BEDROOM APARTMENT TO LET IN PAPHOS CYPRUS



Lovely 2 bedroom garden apartment to rent.

About 3km from Paphos Harbour and only 900m from the sea.

*Main bedroom has a big double bed, plenty of cupboard space, and a patio door leading to a small garden, with patio table, chairs, and parasol for you to dine "al fresco".*

*Second bedroom has 2 single beds, and, again, plenty of storage.*

*Fully furnished and very comfortable, with air-conditioning, excellent kitchen area (fridge freezer, washing machine, oven and hob etc)*

*The bathroom has WC, bath and "over-bath" shower.*

*Plenty of towels, bedding etc all in apartment, so no need to carry that extra luggage. 2 communal pools, plus a children's pool, set in lovely gardens, and close to bus route and local tavernas. Nearest taverna is less than a 5 minute walk away! Only 20 minute drive from Paphos airport and collection can be arranged.*

*Realistic rental rates, as I am only looking to cover ongoing bills and expenses.*

**For more information contact**

**Lawrence on 07836 578563, or e-mail [lozzenge2@gmail.com](mailto:lozzenge2@gmail.com)**

# Happy 10th Birthday to GOBS

The Glenfarg Oil Buying Syndicate (GOBS) was set up by Dave & Kate Arnold (Duncrievie) who placed the first bulk order in July 2011 on behalf of just 18 members. Over the next 5.5 years they built up the membership to just over 200 households and saw the amount of oil ordered increase steadily. The biggest order was in Nov 2016 when 115 members ordered 95,121 litres.

When Kate's health deteriorated in late 2016, they handed over the running of the syndicate to Tom McAulay. Since early 2017 Tom has improved and refined the ordering process and increased the number of orders to 10 per year.

GOBS currently has 238 members and over the past 10 years it has:

- Organised 60 bulk buys.

- Ordered nearly 3 MILLION litres of oil.

- And, perhaps most importantly, has saved its members an awful lot of money!

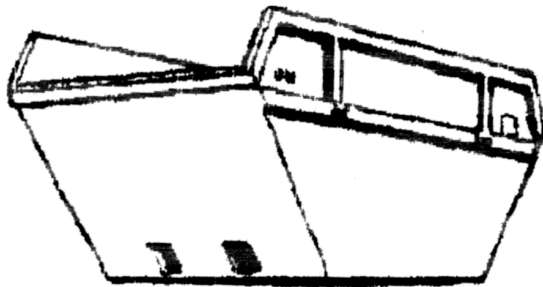
CONGRATULATIONS AND HAPPY BIRTHDAY TO  
A GREAT COMMUNITY ASSET!

If you use oil and you would like to join GOBS, go on to the village website [www.glenfarg.org](http://www.glenfarg.org) and click on "GOBS". Membership is free.

GOBS covers Glenfarg; Duncrievie; Drunzie and the surrounding area, as far as Hattonburn, Path of Condie, Candy, Wicks of Baiglie, Arngask and New Fargie.



# Binn Skips



Binn Farm • Glenfarg • Perthshire  
PH2 9PX

**Tel. 01577 830 833**

Fax. 01577 830 488

# Glenfarg Community Centre Update

SC048505

## A TRANSFORMATION

Some of you will have been aware of goings on at the back of the Schoolhouse... As COVID restrictions eased we called in a wee army of helpers to reconfigure the back garden at the Community Centre.

We wanted to create a large flat grass area first of all so Colin Harris, a local architect and one of our Scout Dads, came along with his tractor & digger and pulled out the holly tree stumps along the side of the house and then extricated a line of scrubby bushes from the middle of the lawn area. Over the next three days and evenings Colin single-handedly worked away to remove the bushes which formed the boundary between the Village Hall garden and the Schoolhouse garden creating a huge lawn.



The whole site was then dug over, levelled and harrowed ready for the next phase with our second expert – Stuart Rogers, a landscape architect and another Scout Dad. On two consecutive Sunday mornings in July we gathered some willing volunteers in to rake over the ground taking out





trugs of rocks, riddling and levelling the ground ready for seeding the grass. It was during the really hot weather which made for thirsty work!

After that we raked once more, rolled the soil and sowed the grass seed ready for the beginning of August, our deadline for giving the grass seed a good chance to grow and establish.

In all we got five skips from Binn skips taking away all the branches, roots and spoil from the site.

It really has been a transformation and shows what a concerted effort by a few people in a short space of time can achieve. There will be lots more opportunities to help especially as we get started on the building work in the schoolhouse itself. Watch this space!



So a great many thanks to Binn Skips for supplying the skips at such a fast pace, to Colin & Carol Harris & Stuart for pulling out the stops & putting in many hours to complete the works and to our volunteers from the village: Ineke, Martin, Angus, Callum, Fynn & Douglas and to our trusty team of Hall board members too!

Please help to let the grass grow by keeping out of the area but by all means go and see for yourselves what a brilliant new space has been created!

# Glenfarg Scouts

## School House Garden

The scouts and explorers have been busy clearing and tidying up the area. The scouts were practising their sawing on the trees and bushes removing branches. One scout, much to the amazement of the leaders was equally good with a saw using either hand and could get into all the tight spaces.



While Amy was cutting back the bushes to allow access to the fence Matthew, Stephen and Calum started digging the post holes for the gate posts and fence. The boys didn't realise just how difficult this would be even though they had a post hole digger to keep the holes narrow. Eventually the holes were deep enough for the gate posts. The post was then cemented in using a mixture of postcrete and the small boulders the boys had removed earlier.

Once Amy had cleared enough bushes Robert sawed through the posts at ground level and the boys helped carry the first section of the old fence onto the grass. A team set to work removing the slats from the fence so we could reuse the posts for the new fence and also the slats.

The boys didn't seem to know their own strength, someone broke the shaft on the hammer and Matthew and Stephen both broke bolts as they tried to tighten them when fixing the gate.

The bushes cleared by Amy and other debris lying on the site was slowly burnt making the area much tidier. The removal of the fence has opened up the area.

The explorers didn't have time to finish the work and asked to come back to put up the fence as they wanted to finish the job.

Ten days later in the rain Amy, Stephen and Matthew returned in the evening to finish the fence. Recycling the slats from the old fence, they cut them to length and attached them to the posts. After using the power tools to attach a couple of slats Amy decided that she preferred sawing the slats to length.



---

## Explorers Stand Up Paddleboarding at Willowgate

As soon as covid restrictions were relaxed we managed to book a late evening session for the explorers at Willowgate rather than the outdoor meetings at Burleigh sands that we had been running.

Willowgate water and land activity centre is situated under the Friarton bridge beside the Tay. The range of activities on offer is increasing and they host events from children's activity parties to corporate team building.

The first people we met there were villagers going for a swim in the lochan. The explorer scouts asked for paddleboarding as they hadn't tried that before. The centre kitted them out in wetsuits (one of the lads did manage to put the suit on back to front) buoyancy aids and helmets. The centre at this point wasn't allowed to use indoor space for changing and the noise coming from behind the changing fences was happy and excited.

The first ten organised piled onto the group paddleboard and the others



followed on individual ones. They didn't spend long paddling on their knees and managed to organise themselves to stand without anyone falling off. The boarders progressed up the lochan like a duck with ducklings. One of the solo boarders got a tow from the gang on the big board.

There is a low bridge connecting an island to the shore and the paddlers proceeded under this very cautiously as a few of them are over 6 feet and the clearance was less than 2.

Paddling back up the lochan to the beach at the far end the explorers, encouraged by the instructors discovered who had the best balance by tying the single boards together and running along them from the beach. Tess easily won the competition.



From this the explorers reboarded the big board with an instructor (who is an explorer in a different unit) and once in deep water rocked the board to see who was the last man standing on the board. They helped each other to climb back on and repeated the game.

Discovering that one of the leaders was still dry the explorer scout instructor promptly tipped the leader off their board.

It was a beautiful sunlight evening and with the brightly coloured huts glowing on the golden beach we felt like we were on bondi beach and not in Scotland.







# FERRIER & MACKINNON

OPTOMETRISTS

We've been proudly delivering excellence in eyecare to the local communities of **Glenfarg, Milnathort, Kinross** and for over 25 years.


Book your **FREE NHS** eye test with your trusted, local optician

[www.fmoptom.com](http://www.fmoptom.com)

74 High Street  
KINROSS  
01577 864009

27/29 Chalmers Street  
DUNFERMLINE  
01383 721502

Practices also in COWDENBEATH, BURNTISLAND, INVERKEITHING, NEWPORT-ON-TAY and LOCHEE

Find us on 



## For Great Home Cooked Food & a Warm Welcome



Yeh micht think ah'm a blether,  
Whatever the weather.  
Come in and gee me a try,  
Tell yir friends and relations,  
We welcome aw nations  
And no jist wee Jock McKay

A Punter or Gourmet,  
Oh ah can assure yeh,  
We cater here for awbody  
You could be a nibbler,  
A mooth like a tiddler  
Or maybe hae wan like a cuddy

Ah'm a pancake, a pancake,  
A canny go wrang cake.  
See me, ah am the greatest,  
Wi a big choice o'fillin'  
And if you are willin',  
You can try oot the latest.

So please tak a look in  
And try oor home cookin',  
Ayeways tae prove an attraction.  
We mak nae excuses.  
Are your gastric juices  
Ready tae swing intae action!

**Pancake Place - Dundee, Dunfermline & Elgin**  
**Cafe Biba - Perth & Pitlochry**

## Overnight hike Across the Ochils

While working with the explorers in the school house garden the explorers, who are working on their gold Duke of Edinburgh and Queens Scout awards admitted that they hadn't had their walking boots on since their last expeditions two years ago. The idea of doing a practise day walk was met with no enthusiasm but the suggestion of an overnight hike, walking all night and legitimately having a reason not to get out of bed the next day was very acceptable.

After checking the route on foot the local mountain rescue team was contacted to confirm that the hike was acceptable to them and make them aware incase somebody called them out when they saw torches in the summits.

We met at 22.00 in Glen Sherup car park. Unfortunately the weather had been wet the previous two days and the midges were out in force as we swapped mobile numbers for safety before handing out the safety cards and survival equipment (bothy bag, first aid kit).



It was light enough to read the map without torches and Stephen led us to the middle of the dam walkway. (Slight breeze there to keep the midges down) Amy took the map, leading us to our next check point. With the explorers leading short legs in turn we were soon at the summit of Ben Shee listening to foxes barking.

Although we could see the terrain well enough to walk over it in the light from the sky we needed torches to read the map. We had good views back to Kinross and north to Crieff as the sky turned orange in the setting sun.

Crossing Maddy Moss on the way to Skythorn Hill the explorers stopped. "There's someone camped beside the track". "Can't be the open group D of E as there are not enough tents" "Lets wake them up". Persuaded to be considerate they moved off quietly again. "It's a boulder not a tent" announced a disappointed voice.

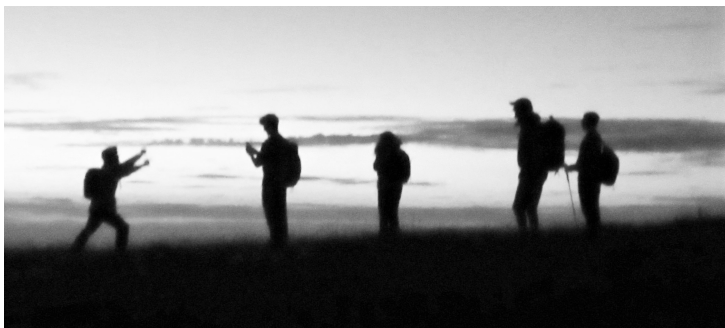


On the summit of Ben Cleuch we could see from Edinburgh to Stirling. Grangemouth was a mass of bright light. Sitting on the summit at 01:30 eating and listening to the night sounds, in particular a snipe, Stephen announced "I've no idea what's making that noise. But I wish it would stop. It's freaking me out".

Before turning past home Amy and Calum were invested into the explorer scout unit on the summit of Ben Cleuch. Returning over Andrew Gannel Hill the sky lightened with hues of pink and orange to the east. By the time we reached the summit of Tarmangie hill we could read the map without head torches and the explorers grew confident in their navigation. The drumming and whooping of the snipe had switched to the singing of the larks.

By the time we stopped for a final snack on Innerdownie before the descent all the colours were true. Some of the fields had patches of mist in them.

We descended through the fire break to the forest track and the explorers continued to navigate to get us back to the car park. The midges were out again making cooking breakfast difficult as we waited for parents to collect explorer scouts at 07:30. Exhausted due to lack of sleep the explorers were pleased with their achievement. Amy said "I want to do another all night hike".



# Letter from Australia

The village website recently received an email from Chris Tate, a retired Australian lawyer who has happy memories of Glenfarg in the 1970s. Here is his story -

*Yes, I have some wonderful memories of my visit to Glenfarg way back in December 1975/January 1976. I was 25 years old then, a lone traveller.*

*I was travelling in the UK, when I met two young ladies in London - Jo and Faye. They were fellow Aussies, and told me they were heading up to Glenfarg to work in the Glenfarg Hotel during the Christmas/New Year's holiday period. After I spent Christmas in London and some time in Edinburgh, such a beautiful city, I caught a bus to Glenfarg a few days before New Year's Eve 1975.*

*When I got there, the hotels were full with expatriate residents from the area, who were returning for Christmas. They were from all over the world. However, the Glenfarg Hotel owned a house down the road, which it was renting to contractors working on the M90. The workers who lived there had gone home for Christmas. I was offered the whole house for the same price as a room at the hotel. Of course, I jumped at the opportunity.*

*I see from Google Earth Pro the house is still there. My photo from December 1975 is attached.*

*I enjoyed all the benefits of the house, including plenty of room, an open fire and, importantly, a fridge, which I stocked with food and drink.*



*After a night of sleep in comfort, I would head over to the hotel, where I would go down to the cellar to where the coal was stored, load up the coal into buckets and take them up to the kitchen. There, the cooks were making breakfasts for the guests. In return, the ladies made me a hearty breakfast, which I ate there with them chatting about this and that. They were lovely.*



*At the end of each day roaming around the area on foot, through the snow, taking photos, I would end up at the bar in the Glenfarg Hotel. There I met a bunch of lads eager to teach this Aussie what drinking was all about. I threw myself into the challenge with great gusto and enthusiasm. We were often joined by hotel guests too.*

*One game was to shout me a drink if I could say 't'is a brow bricht moonlicht nicht t'nicht' a few times in a row. It took me a lot of practice, but I got there.*

*A highlight for me was the Community Dance Night in the Village Hall. The hotel staff encouraged me to ask Jo to the dance, and she agreed. We had a great night, dancing and talking with folk.*

*Then came New Year's Eve. Jo and Fay were working of course, but I was warmly welcomed by the hotel staff to attend the hotel's free sandwich and beer celebration in the bar. It was full of revellers. Then came a kilted lad who spun around the bar area with his kilt flying high into the air.*

*After the hotel closed, we all traipsed around the village visiting houses all the while singing, telling stories and dancing to continue the party. We ended up going up a hill to a large house or mansion, where last drinks were served by the generous hosts. That was the end for me. After a few ales, I headed back to my house for a much needed sleep.*

*I have attached some photos I took then. Such a great place, such lovely people.*

*Le meas coibhneil. Chris Tate from Melbourne in Australia*

# Friends of Wallace Park

It's been three long years, but finally the Friends of Wallace Park's plans are beginning to fall into place. It all began with the Glenfarg Conversation, a survey organised by Glenfarg Community Council which asked residents what improvements they would like to see in their community. The top priority was for improvements to Wallace Park and so the Friends group was formed.

Working in partnership with PKC's Community Greenspace, plans were drawn up, consultation carried out and fundraising began. The first phase of the plan was to extend the path around the park. Originally it was only possible to take a path from the car park to the children's play area. With the extension of this path, access to all areas of the park would be possible.

Phase one is now complete and buggies, wheelchairs and tricycles are enjoying the new freedom. Walkers and dog owners can now take the air without getting their feet wet, and runners have a new circuit to use as part of their training programme.

In the next phase, fitness stations and extra equipment such as a zipwire will be sited along the path.

The project was managed for the Friends by TRACKS – The Rural Access Committee of Kinross-shire.

The path was built by J M Dewar Plant Contractors and used some recycled material donated by the Binn Ecopark.

The Friends of Wallace Park are grateful to their funders - Avondale Environmental (part of the NPL Group, through the Scottish Landfill Communities Fund), The Gannochy Trust, The Binn Group, The Kinross-shire Fund and the Community Environment Challenge Fund.



Great excitement - the machinery has arrived. We go down to the park to see.



The path is being dug and a truck takes away the soil for use when reseeding.



We decide on a winding path from Copperfields estate into the park.



The big machines are here and starting to spread the tar.



Now it's possible to walk along to the tennis courts and up to join the old path.



Margaret meets with the contractor and TRACKS officer to celebrate completion.

# GLENFARG CINEMA RETURNS



Glenfarg Community Cinema is happy to announce that we will be recommencing our program on Friday 10<sup>th</sup> September 2021 at 7.30pm with the highly praised 'Fisherman's Friends'. More of which later!

The committee have met to discuss arrangements to make you feel at ease with going to a public place.

In that respect we have decided to limit the audience for this first screening to 36 tickets which will be available at the Village shop or by emailing Doreen Ashton (ashton.doreen@yahoo.com) or phoning (07546169975) .

Contact details will be taken at the door. Masks will be required to be worn on entry and when moving around the hall.

On this occasion we will not be having an interval, but please feel free to bring your own refreshments, as normal.

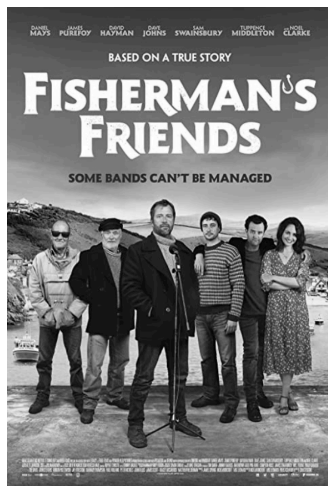
Visit the Glenfarg Community Cinema's Facebook page for the film details and up-to-date information.

## **Fisherman's Friends**

Danny is a music executive who travels to Cornwall on a stag weekend with a bunch of his shallow London music PR mates and he joins in with their inanities to soothe his secret loneliness. He is then pranked by them into offering to sign local sea shanty singers. It is inspired by the true story of the Fisherman's Friends, an all male a cappella singing group.

Danny is played by Daniel Mays (Line of Duty) and Scottish actor David Hayman plays Jago.

A funny, romantic feel-good film. 26





# WITH IMPROVED ACOUSTICS

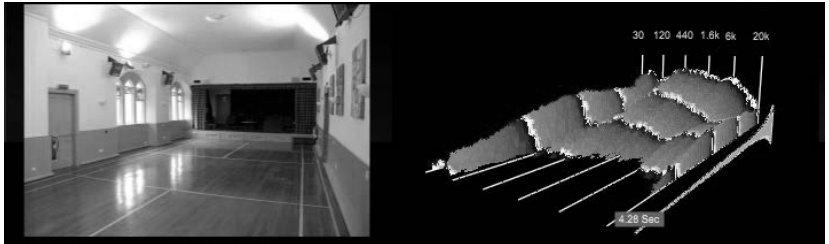


We are aware that some of our customers were having difficulty understanding dialogue, especially if the film was american. The hall's acoustic qualities also created problems for other social events. We therefore sought the advice of acoustic experts on how to improve this.

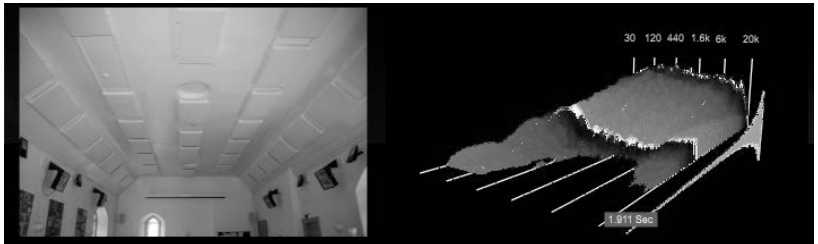
As a result, the cinema committee and hall committee jointly purchased acoustic panels for the ceiling. These were installed free of charge by TDJoinery Ltd. We arranged a private viewing, trying out various genres of film including musicals and american thrillers. We were delighted to hear the results but we still thought it would be useful to carry out a test

Robin had previously carried out an acoustic test in the hall. He subsequently repeated this with the panels in place. Here are the results -

BEFORE

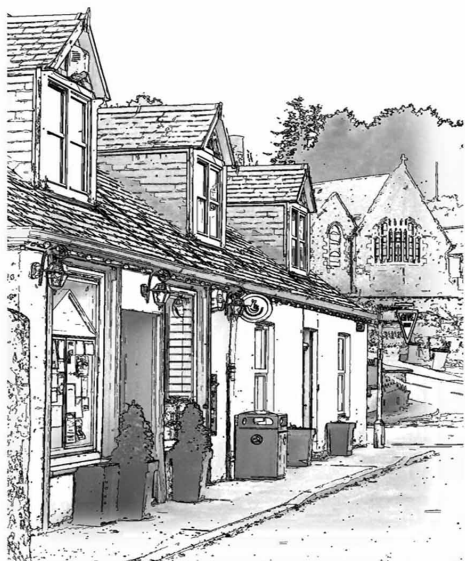


AFTER



I won't go into detail of what these graphs show but there is obviously a significant difference. The Before graph is bumpy, each bump representing a reflection. The After graph is much smoother. We think this represents a considerable improvement in the hall acoustic which should benefit all users of the hall.

*Janet Watson*



# Glenfarg Village Store

Now an Amazon & DPD Parcel Hub

## Opening Hours

Mon. to Fri. 8am to 7pm

Sat. 9am to 5pm

Sun. 9am to 3pm

[glenfargshop@gmail.com](mailto:glenfargshop@gmail.com) - Tel. 01577 830823

Follow us on Facebook

# JOHN ANDERSON

FISH  
MERCHANT



## In Glenfarg and Duncrervie Every Wednesday Morning

### On the van

Haddock, Smoked haddock, Salmon, Smoked salmon , Mackerel, Kippers,  
Rainbow trout, Seabass, Cod, Hake, Lemon sole, Pickled herring, Eggs,  
Artisan breads, Seasonal fruit & vegetables. Lobster & Crab pre-order.

# CLONFARE AND DUNGERVIE IN BLOOM

Regular readers of the Newsletter will remember how the decision was made to create a wildflower area at Dupplin (the piece of waste ground at the North end of Main Street). However let me first tell of a conversation I had the other day with a recently arrived resident who asked "Why do you call that area Dupplin?"



In 2006 that area was an unsightly dumping ground, blighted by flytippers when GDIB and the community took it in hand to create a permanent planted area and a wildlife haven. As you can see from the photos our helpers were of all ages. Dupplin Nursery of the Dupplin Estate donated perennial plants, which survive to this day, so it was decided to name the area Dupplin.

Meanwhile back to the wildflower project. Following the preparation work and initial sowing of native wildflower seeds by the GITs last October, the Duke of Edinburgh girls have now completed the planting of seedlings and perennials in addition to four buddleia cuttings, an excellent source of nectar for butterflies. A very important plant in the initial stages is the yellow rattle, a native semi parasitic plant, which is essential in establishing a wildflower area by controlling dominant grasses and opening up areas for finer grasses and wildflowers, and happily this plant has germinated well and produced many seed heads for next season's growth.

There are also many success stories in our perennial transplants which are marked with short canes, e.g. Field Scabious, Selfheal and St John's Wort, and are all doing well although they may not show much this season and are unlikely to be appreciated from the roadside this year.

However the wildlife seems to be enjoying the area already. Apart from sightings of the more common bees, insects, moths and butterflies, Ringlet and Small White butterflies have been spotted



in addition to the Chimney Sweeper moth.



Also the Bug Hotels are showing evidence of occupancy with “Sold signs” on many holes/rooms.

If you have spotted anything unusual in the area please let me know as GDIB care as much for the natural environment as we do about pretty flower displays, and feedback is all important for us to learn what works and what doesn't.

Although a wildflower area can take years to establish, from what has been achieved in just Dupplin's first season, Glenfarg and its wildlife are in for good times. The area will be strimmed in the Autumn as unlike Auctermuchty Common or the wildflower meadows above Blair Atholl we don't have a herd of cows or some sheep to graze at Dupplin.



Make your first move today by calling Kate on 830343.



Hopefully in 2022 we can return to our fundraising events but before that we would like you to contact us with any suggestions on what YOU would like to see in our village. Already we're researching and costing perennial and annual plants for this winter and of course our summer displays. After such an upsetting couple of years let us get out and really show off this great community with colour and spectacle.

---

## Goodbye to the Findlays



Irene & Lorne's move “doon the road” to Kinross could not go unrecorded by the GDIB committee so a whip-round was organised but what do you buy the Findlays? Yes that's right Garden Vouchers which we know will be put to good use as Irene & Lorne work their magic in their new garden. In addition a bird box, built by the GITs and decorated by Alison, will also find a corner in Kinross.

# Pub In The Park

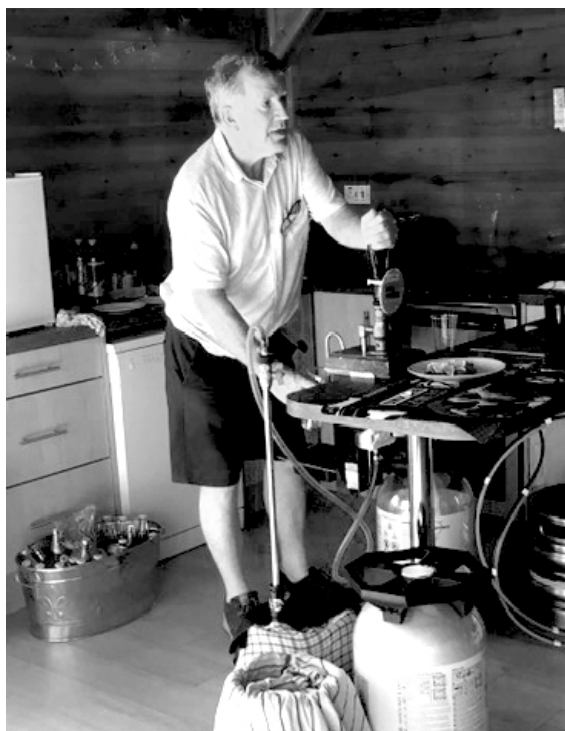


That was the week that was! Well technically it wasn't a week, it was five days but let's add on set up and set down days and make it a week.

The sun shone, the gazebos and tables and chairs were in place, and Glenfargites turned out in their droves. The waiters and waitresses were run off their feet to-ing and fro-ing to the bar. The barmen's biceps grew several inches thanks to all the pints they pulled. The Spanish street food vendors were so







happy with their sales they returned for an additional evening slot. The hot pies also went, as they say, like snow off a dyke. So for many a Pub in the Park was also "Yer Tea in the Park".

Of course nothing happens without someone at the helm and the inimitable Steve Whiting and Tim Corcoran were the men for the job. They organised, led and, I suspect, cajoled numerous helpers to carry out the seen and unseen tasks. Thank you Steve and Tim.

Yes the weather, the drinks,  
*continued overleaf*



the food and the volunteers were all fantastic but what else did the Glenfargites say? Most of them also commented on how nice it had been catching up with friends both old and new, and how the past 18 months has shown us what we really miss, simple socialising. A couple who moved from Glenfarg 2 years ago returned for the weekend and said "We wouldn't have missed this for the world"





The question on everyone's lips now is "When can we have a permanent pub in the village?". Us oldies can remember when a much smaller Glenfarg had two well supported pubs. Hopefully, with all our support, the Glenfarg Village Inn will soon be a reality.

Kate Armstrong

# Improving Broadband in Glenfarg

Following the article in the March Newsletter and on Facebook Grapevine regarding full-fibre Broadband connections I thought it would be good to update the village on progress. Many people registered using the link suggested in that article and I think there is a real prospect of enabling the update to full-fibre in Glenfarg. To re-cap, at the moment connection from premises to the Internet is via copper wire to the cabinet (the green pavement boxes) and only thereon using optical fibre cabling. This is known as a FTTC connection (Fibre To The Cabinet). The exception to this is Copperfields where, as a new development, they are already full-fibre to the premises (FTTP Fibre to the Premises). The aim is to get FTTP possible in the rest of the village.

Why would you want that?

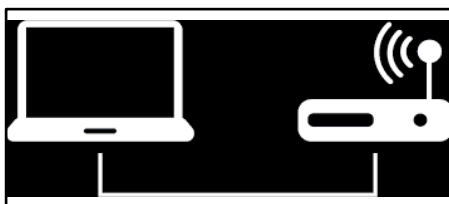
Full-fibre is more reliable than copper wiring and is capable of carrying much greater speeds. FTTC is capable of download speed of only up to a maximum of 80 Mbps (megabit per second) and that is optimistic, FTTP is capable of going up to 1 Gbps (gigabit per second, 1 gigabit being 1000 megabits). FTTC can only be asynchronous (much slower upload than download), FTTP can be synchronous with the same speed in both directions. FTTP does not slow down as more people start using the cabinet (known as the often quoted 'contention ratio'). Connection speed of FTTP is independent of distance from the cabinet.

Note the caveat in the above: 'can be'. What you get actually depends on your contract with your Broadband supplier.

Another, longer term, change that should be considered is that by 2025 the old means of telephone landline connection, PSTN (Public Switched Telephone Network), is to be switched off, meaning that all 'house' phones will be connected via Broadband connection using VoIP (Voice over Internet Protocol). It may be that some operators will switch over before that, but the current landline telephone service is due to switch off by the end of that year. There is a document on Ofcom's website detailing the change. This will put a further load on your Broadband connection.

So where are we in the process and what is the cost? It is believed that there are enough people interested in accepting FTTP to have a realistic prospect of going ahead. But we will need patience!!

The UK Government has committed to provide a voucher worth £1500 for each residential property and £3500 for each business that will upgrade their connection. The voucher and the money will be paid to OpenReach towards the cost of installation. OpenReach will be able to redeem that voucher providing the owner of the premises to which FTTP is installed contracts with their chosen Broadband supplier to a doubling of their current connection speed for at least 12 months. So depending on the Broadband supplier that is likely to be a real cost to the premises owner. It is hoped, however, that the actual cost of FTTP installation will be zero.



I have opened a Community Fibre Partnership connection with OpenReach. In there I enter those people who are *interested* in moving forward with this. I am saying interested because that does not commit us to anything. When I think we have everybody entered that is likely to take up FTTP I ask OpenReach to prepare an implementation plan and costing. Experience to date means that it is likely that the installation cost will be fully covered by the voucher scheme. They will then require a commitment from those people who have been entered into the Community Fibre Partnership to commit to the installation (and the upgrade of their speed as per above). That is the point at which we will be committed to proceed. From there on the actual installation will be timetabled by OpenReach into their work plans, so that could mean up to a year in the future.

If we have spoken recently, or you have replied to an email from me on the subject, then your data should already be in the system. If you have not received an email from me, even if you registered on the Gigabit website (there are some that I know did not come through), please get in touch by the means below giving your full address and telephone number so I can add you into the Partnership.

To keep up to date on the project visit <http://kinross-shire.org> from time to time.

Bill Macpherson [bill.macpherson@glenfeargach.co.uk](mailto:bill.macpherson@glenfeargach.co.uk) 830430



**A Glenfarg based dog exercise service offering dog walking  
and for more energetic dogs, jogging and biking sessions**

call Yvonne on 07585 060 663 or email [info@tailsandtrailsglenfarg.com](mailto:info@tailsandtrailsglenfarg.com)  
visit us at [www.tailsandtrailsglenfarg.com](http://www.tailsandtrailsglenfarg.com) or find us on Facebook & Instagram

## **POOCH PERFECT**

### **DOG GROOMING SALON**

**Professional dog grooming service  
with over 6 year's experience**

**The Gables, Main Street  
Glenfarg PH2 9NT**

**01577 830741  
[poochperfect741@gmail.com](mailto:poochperfect741@gmail.com)**





**Rainy Day Kitchen** are located in Glenfarg. We provide delicious homemade celebration cakes, cupcakes, biscuits and treats, as well as a selection of vegan options.

Everything is freshly baked to order and available for pick up or free local delivery. Our bakes are also available at the Glenfarg Village Store, Jock Anderson (Quality Fish Merchant) and Pizza Via (Artisan Wood Fired Pizzas).

We are registered with Perth and Kinross Council, fully business insured and Level 2 Food Hygiene certified.

Please contact us at any time to discuss your requirements.

Follow us on Facebook at rainydaykitchenuk

Phone 07957 243038 Email rainydaykitchen01@gmail.com

## IJC Bookkeeping and Payroll



**KEEP  
CALM  
AND  
HIRE A  
CERTIFIED  
BOOKKEEPER**

Don't let your paperwork get on top of you!

I offer a full range of Bookkeeping, Payroll and Self-Assessment services for Individuals and Small Businesses.

A friendly, reliable service at very reasonable rates.

- Self-Assessment Tax Returns
- VAT Returns (MTD Compliant!)
- PAYE and Payroll
- CIS Returns
- Sales and Invoice Recording
- Bank Reconciliations
- Management Reports
- General Office Administration




Practice Licence No: 20709

**Isla Craig BSC (Hons) , MICB PM. Dip**

Email: [islacraig70@gmail.com](mailto:islacraig70@gmail.com)

Tel 01577 830125 / 07788 604202

 @ijcbookkeeping

## Christine's One-to-One Puppy Training



Personal training and advice for puppies 7 - 20 weeks of age within 10 miles of Glenfarg (no limit for virtual consultation). Start training your new friend as early as possible to avoid bad habits developing and you feeling confused and overwhelmed.

Christine Fotheringham – highly qualified Dog Behaviourist

07920 428312 christineandfern@gmail.com

More information on Christine's One-to-One Puppy Training Facebook page.



# VETERINARY SURGEONS

## CAMERON & GREIG MRCVS

'Ardmhor', Stirling Road, Milnathort KY13 9XR



*By appointment only*

Monday - Friday

9 - 10.00am

2 - 3.00pm

6 - 7.00pm

9 - 10.00am

Saturday



Telephone: Kinross 863 494  
Website: [www.cameronandgreigvets.co.uk](http://www.cameronandgreigvets.co.uk)

*Large and small animals  
24-hr emergency service*



**ANDREW MILLER FIREPLACES**

**27-29 Westerloan, Milnathort KY13 9YH**

**Showroom by appointment**

**&**

**The Conservatory Jamesfield Farm Shop & Restaurant**

**By Abernethy**

**Open 9am – 5pm**

**FIRE SURROUNDS      ELECTRIC SUITES**

**HEARTHS   BEAMS   SHELVES**

**ELECTRIC GAS WOOD MULTI-FUEL**

**STOVES & FIRES**

**Email: [millerfireplaces@btinternet.com](mailto:millerfireplaces@btinternet.com)**

**Tel: 01577 862173   Mob: 07870 284868**

○

*Silver Lining  
Hair Studio*

*Ladies, Gentlemen, Children, Students, Seniors*

*Bridal Hair a Speciality*

**School Wynd, Abernethy, Perth, PH2 9JJ**

**Telephone (remains the same) 01738 851110**

**(Open 7 days a week)**

**Online booking system via Fresha**

**Follow us on Facebook, Instagram and Google Maps**

**[silverlininghairstudio@hotmail.com](mailto:silverlininghairstudio@hotmail.com)**

# Newhill Granary

STAY • EAT • COOK

*Newhill Granary is a large luxurious and stylish duplex conversion of a former granary that is perfect for a special break for 2 people  
It is located 2 miles from Glenfarg and Milnathort*

*New Hot Tub on private terrace from April 2021  
Perfect for stargazing*

- *Catering for residents*
  - *Private dining for groups*
  - *Small parties and events*
  - *Outside Catering and food to order  
by Stellas Canapes*
- (see website for weekly menus during Covid)*

*newhillfarm.co.uk*  
**07803 136468**  
**Juliet Hamilton**

# **Glenfarg S.W.I.**

The S.W.I. are hoping to start the session on the 9<sup>th</sup> of September when we will be having a get together and chat with tea. All meetings are to be held in the afternoon at 2pm (not 7pm) in the village hall unless otherwise stated. There will be no competitions at the first meeting. New members and visitors will be very welcome. Visitors £4.

Our programme for the 14<sup>th</sup> October is chair exercises by Caroline Waring.

Competitions

Halloween Mask (any craft)

3 Treacle Scones

Flower of the month.

November 11<sup>th</sup> we have a talk and slides by Aileen Neilson and Micheal McCready on Wheelchair Curling.

Competitions

Bookmark depicting poppy or poppies

Filled baked potato

Flower of the month.

9<sup>th</sup> December we have entertainment and a Finger Buffet

Competitions

Knitted Angel (pattern supplied)

Slice of Seasonal fruit loaf

Flower of the month.

# QWERTY IT SERVICES

Your Local

COMPUTER EXPERTS



## ABOUT US

We are a local IT support company based in Oakbank, Perth. We have been providing computer support services to home users and small businesses for over 15 years.

We pride ourselves on offering the best service to all of our customers at an affordable price and we always go the extra mile to make sure all of our clients return to us time and time again.

David Silvester, owner

## Get in touch

8 Mountview Road, Perth, PH1 1LD  
[info@qwertyitservices.co.uk](mailto:info@qwertyitservices.co.uk)  
[www.qwertyitservices.co.uk](http://www.qwertyitservices.co.uk)



## OUR SERVICES

- ✓ Windows 10 Upgrades
- ✓ Virus Removal
- ✓ PC and Laptop servicing
- ✓ New Computer Setup
- ✓ Troubleshooting
- ✓ Upgrades and Advice
- ✓ Security Checkups

01738 479 564

## **Glenfarg Community Council Business Meeting**

**Monday 5<sup>th</sup> July 7:30pm via Zoom media**

### **Agenda**

#### **Welcome**

- 1. Apologies**
- 2. Approval of last Business Meeting Minutes**
- 3. Action Points**
- 4. Glenfarg Hotel**
- 5. Covid**
- 6. Reports for virtual meetings**
- 7. Planning Report**
- 8. Police Report**
- 9. Finance Report**
- 10. AOCB**

Community Council election

Covid and Lochelbank Wind Farm Covid recovery fund

#### **Welcome**

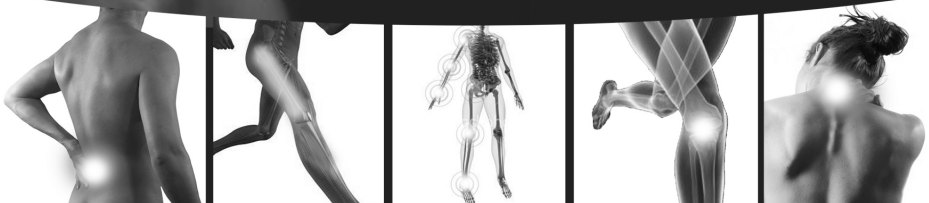
GCC Chair, CCllr Ponton, thanked her fellow CCllrs for their attendance and expressed her gratitude to the owners of the Village shop, to all of the village's residents and many others for their valued help at this troubled time in our community.

CCllr Ponton urged the current CCllrs to engage with residents and to encourage any to come forward to support their community as a CCllr in consideration of the current election

# KINROSS Physiotherapy



- **SPRAINS/STRAINS/TEARS**
- **LOWBACK/NECK PAIN**
- **HIP/KNEE/ARM PAIN**
- **GOLFER/TENNIS ELBOW**
- **TENDON INJURIES**
- **ARTHRITIS**
- **TMJ (JAW PAIN)**
- **POST FRACTURE OR DISLOCATION**
- **REHABILITATION FOLLOWING SURGERY**



## **OPENING TIMES**

**MON - FRI  
10am - 9pm**

**37 New Road, Milnathort  
Kinross KY13 9XT**

**01577 864875  
07912 100 845**

**[enquiries@kinrossphysiotherapy.co.uk](mailto:enquiries@kinrossphysiotherapy.co.uk)**

process. A resident can be co-opted/elected on to the GCC in due time.

**Attendance through Zoom media:** CCllr Ponton, CCllr Pilmer, CCllr Fraser, CCllr Christie, CCllr Horsman, PKC Cllr Robertson, PKC Cllr Watters and two members of the public.

**1. Apologies** – PKC Cllr Purves

**2. Approval of last business meeting Minutes.** Proposer CCllr Fraser, Seconder CCllr Ponton.

### **3. Action Points update**

#### Roads and Pavements

PKC Cllr Robertson did liaise with PKC to alert the relevant department about the ongoing issues with drains and other problem areas. He stated further that PKC were aware of the village's problems, that PKC had many ongoing repairs with other areas and that contractors' activities will take time to repair/renew the many faults throughout the coming months. It was noted that a PKC person had been out to survey the village during the last serious rain fall and the subsequent problems arising. CCllr Fraser stated that a number of drains looked as if they had been missed. PKC Cllr Robertson will liaise further with his PKC contact. CCllr Ponton alerted everyone to two drains blocked at the Paris Bridge and that there was evidence on the pathway to Duncrievie that soakaways surrounding the Copperfield house looked susceptible to problems – one to watch for the future. CCllr Fraser will liaise with PKC Cllr Robertson for the topics as a whole. *Action PKC Cllr Robertson and CCllr Fraser*



GILLIAN FORBES  
STONECARVER  
BESPOKE  
HANDCARVED MEMORIALS  
AND LETTERCUTTING

[www.forbesstonecarver.co.uk](http://www.forbesstonecarver.co.uk)  
email: [gilliancforbes@hotmail.com](mailto:gilliancforbes@hotmail.com)  
01577 830754

## Give your feet a Treat



Private podiatry/chiropractic in  
the comfort of your own  
home.

H.P.C. Registered

Lisa Allison BSc Tel 01577 830678



#### **4. Glenfarg Hotel**

The continuing deterioration of the Hotel as a structure and the work inclusive of boarding up the lower ground floor windows carried out to make it safe was discussed. It was noted that a meeting “On Site” with CCllr Ponton and a PKC representative could be advantageous to discuss what could/may happen in the future.

PKC Cllr Watters stated that PKC are to pursue renumeration of their costs associated with making the structure safe however, this will not be a straight forward task

PKC Cllr Robertson suggested that at the very least the frontage should be preserved.

CCllr Ponton to make contact with PKC to arrange/discuss this matter with regard to the structure and its future at present.

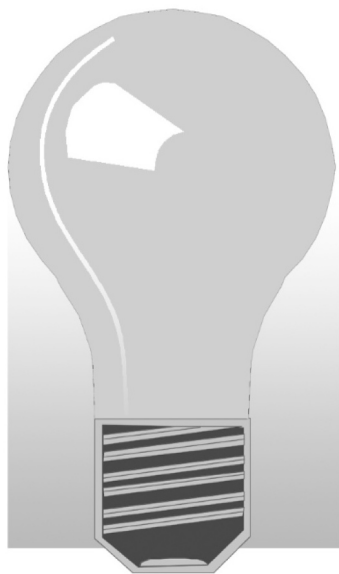
*Action CCllr Ponton*

#### **5. Covid**

CCllr Ponton reported on a letter received from a Mr C. Wilkins who is involved with the Trustees of the Village Community Hall concerning, in brief, what the GCC could/would be doing/carrying out with regard to coming out of the Covid Pandemic.

CCllr Ponton had replied to Mr Wilkins with regard to all of his points and posed the further questions that whilst the GCC is governed by PKC and the Scottish Government that the Village Community Hall is an asset that has served the village well in the past and can do so again in the future.

At this juncture CCllr Pilmer brought forward the item under AOCB which was to discuss access to a Covid Fund as determined by the panel representing the Lochelbank Wind Farm. CCllr Pilmer reported that groups or bodies that have been



# *John Allison*

## *(electrician)*

*'Ardblair', East Blair,  
Glenfarg, Perth PH2 9QL*

*Tel: 01577 830 678*

*Mobile: 07717 791 484*

*Email: [johnwallison@btinternet.com](mailto:johnwallison@btinternet.com)*

*All types of electrical work undertaken*

*Also:*

Oil and gas central heating faults ~ Telephones

Computer network cabling ~ TV aerials and  
distribution ~ Satellite re-alignment, alterations and  
distribution ~ Wall mounted TVs installed

***FREE ESTIMATES/ADVICE***

penalised for income (as a result of the Covid Pandemic) and require start up funding or funding to assist with the cessation of the spread of Covid at a venue e.g. Village Community Hall, could apply for funding through the GCC's Finance Contact – CCllr Horsman. The Covid Fund circa £4000 would be accessible via the present Microgrant format by any Glenfarg based group or body. CCllr Pilmer was asked to make this topic known publicly and to notify Mr Wilkins in due time too. *Action CCllr Pilmer*

## 6. Reports on Virtual meetings

It was decided by the Chair to carry this topic forward to the next Business Meeting.

## 7. Planning Report

CCllr Christie reported on the following matters:

Reference	Date	Applicant	Details	Action
21/00407/FLL	27/04/2021	G S Brown Ltd	Erection of 6 dwellinghouse, garages and associated works at Land 40 Metres North Of Woodbine Cottage, Duncrevie	Awaiting Decision
21/00465/FLL	19/04/2021	D A Baillie Ltd	Extension to agricultural building at Colliston Farm, Drunzie	Awaiting Decision
21/00588/FLL	07/04/2021	Mike Taylor	Extension to dwellinghouse at Lilyvale, Duncrevie	Awaiting Decision
21/00483/PNF	30/03/2021	Jennifer Gordon	Formation of Turning head, Heatherleys Forest, Glenfarg	Approved
21/00084/PNA	21/01/2021	Binn Farm Ltd	Erection of animal shelter, Land 600 Metres West Of Binn Farm, Glenfarg	Approved

## 8. Police report

CCllr Pilmer reported that there had been no notification of any serious crimes within the Glenfarg area. The Police Commander's Bulletin for the Perthshire area is published weekly via the Glenfarg Grapevine.

*continued overleaf*

# ALPHAVET VETERINARY CENTRE

39 High Street, Kinross, KY13 8AA

For a caring professional service for all domestic pets



**TELEPHONE 01577 863 328**

E-MAIL: [alphavet@alphavet.co.uk](mailto:alphavet@alphavet.co.uk)

WEBSITE: [www.alphavet.co.uk](http://www.alphavet.co.uk)

Scotland's 1st Veterinary Practice Website!

Consultations by appointment

Monday to Friday 9.00am to 12.00 noon  
and 4.00pm to 6.00pm

Saturday 9.00am to 12.00 noon

Reception is open: Monday to Friday 8.30am to 6.30pm  
and Saturday 9.00am to 12.00 noon

***For our 24-hour Emergency Service  
please telephone 01577 863 328***



## Home Cleaning Service



We are two mums that offer a reliable, local and efficient cleaning service.

Whether it be a weekly clean, two weekly, monthly, one off or end of tenancy clean we cater to all.

We are both experienced cleaners and provide a wide range of bespoke cleaning services to suit all our clients needs.

Please don't hesitate to give us a call for a FREE quotation.

Glenfarg and surrounding areas



Telephone: 07745 869698 or 07495 294146

## 9. Finance report

### TREASURER REPORT 5<sup>th</sup> July 2021

#### 1. GCC – BALANCE ON ACCOUNT £576

Income – Nil

Expenditures – £84 Community Webhost fee (Glenfeargach)

#### 2. GCC NEWSLETTER ACCOUNT – BALANCE £6 420

This balance is made up as follows :

	Newsletter	Microgrant
		£
At 3 <sup>rd</sup> May 2021	4 712	1 403
Income	620	Nil
Expenditures/payments	222	93
	<hr/> 5 110	<hr/> 1 310

Income/Expenditures since last meeting:

#### **Newsletter:**

Income – £620 from Advertisements/Donation tin

Expenditures – £222 Danscott Printing costs

#### **Microgrant:**

Income – Nil

# YOUR LOCAL PLUMBER

**NO CALL OUT CHARGE - NO JOB TOO SMALL  
DISCOUNT FOR SENIOR CITIZENS**

- Boilers - New Installations, Repairs and Servicing (OIL, NG & LPG) & Landlords Safety Certificates
- Bathrooms - New Installations, Upgrades & Shower Repairs
- Central Heating - Radiator valves repaired & replaced, system descale & flush, new radiator installations, Under floor heating, Fitting of gas hobs & cookers
- Dripping Taps - Outside Taps - Plumbing in washing machines & dishwashers - Toilet Repairs - Drains etc



**DOUGLAS MILLER**  
**01577 861623**

**WORCESTER**  
Bosch Group  
Accredited Installer

# Stewart Funeral Directors

14 High Street, KINROSS KY13 8AN  
Tel. (01577) 864607



**Modern Hygienic Preparation Room**

**Private Family Viewing Suite**

**24 Hour Personal Service**

**Specialist Ambulance Transfers**

**Funeral Planning Consultations**

**Memorial Sales by Regency Memorials**

**24 Hour Emergency Service Tel. (01577) 864607**

Expenditures – £93 path works by pond

### **3. SCHOOL FUND £141**

No Change

**TOTAL FUNDS HELD £7 137 at 5<sup>th</sup> July 2021**

### **10.AOCB**

#### Community Council Elections

The forthcoming election for new CCllrs will commence on the 1<sup>st</sup> July. We have all been encouraged by CCllr Ponton to ask any likely candidate to put their application forward as soon as possible.

CCllr Ponton requested that CCllr Pilmer advertise the election via social media and that he is to forward the application forms on to any person who makes a request. CCllr Pilmer added further that any Co-opted CCllr must reapply for a position because the Co-option will cease with immediate effect.

Co-Opted CCllr Christie is to reapply and that the GCC is aware of a number of members of the public (within the Glenfarg Ward) who may decide to apply too.

The Community Council in Glenfarg is permitted to have twelve CCllrs however, as a minimum, we can operate with six whereas presently there are only four CCllrs and one Co-opted CCllr, not enough. CCllr Ponton requested that the Publicity is to be started, a notice inserted in to the GCC Notice Board and that any requests for forms are to be issued and that we can all help with any request for information. *Action CCllr Pilmer (Publicity, information and forms), CCllrs Fraser, Ponton, Christie and Horsman – Information.*



WASP NESTS -  
ELIMINATION  
GUARANTEED

**AVAILABLE 7 DAYS A WEEK**  
**LOCAL RELIABLE PROFESSIONAL**  
**SPEEDY SERVICE FOR EMERGENCIES**

All pests professionally dealt with

Free Surveys Fully Insured

Domestic Commercial Agricultural

Contract work or One-off visits

wasps • bees • ants • rabbits • squirrels  
flies • fleas • moles • bedbugs • rats • mice  
moths • spiders • insect infestations • rabbit fencing  
bird proofing • pest birds • all other problem pests

**Call us to sort out your pest problem**

**01738 813751**

**07767 353535**

[www.andylawpestcontrol.co.uk](http://www.andylawpestcontrol.co.uk)

Bridge of Eam, Perth.





### Village Inn and Community Centre (Village Community Hall)

CCllr Ponton spoke about the future of an Inn type of theme and expressed her concern that there appears to be a stalemate with regard to interested parties being held back by the current Covid pandemic.

It was agreed that future discussions with any interested parties for the benefit for the community as whole needs to take place and that all interested parties should be contacting others to generate an impulsion to move matters forward.

The GCC is aware that there may be ground available at the rear of the Village Community Hall. However, that point is still to be discussed with the Trustees. Further discussions of an informal nature are to take place by the GCC with interested parties.

PKC Cllr Watters reported that there has been a number of Community lead initiatives throughout Scotland and that “from a beginning to an end result” can take a considerable amount of time and effort by all involved.

A member of the public asked about the Bowling Green venue as a possibility however, the GCC believes that no progress was made previously by a Village Pub interested party through their discussions with the Bowling Green management/committee. A member of the public agreed that he could explore further ideas and report back any findings at the next Business Meeting. *Action by a member of the public.*

### Village Community Hall

Top Soil excess, as a result of work activities related to Wallace Park, will be moved to the grounds of the Village Community Hall for landscaping work.

# W. Stewart

Landscaping and Paving



Landscaping and Ground Works



Ask about turfing

All work is carried out by trained craftsmen and is fully guaranteed.

Call for a FREE no obligation estimate

**Tel : 01577 898595**

**Mob: 07516 595192**

email: [wstewartlandscape@hotmail.com](mailto:wstewartlandscape@hotmail.com)

Quality just can't get any better!

LANDSCAPING & DRIVEWAYS

Monoblock - Stone Paving

Slabbing - Decking

Sandstone Walls Re-rendered

Drainage - Gravel - Cobbles

Heritage - Cotswold Drives

Patios & Paths - Parking Areas

Land Engineering

Tidying and Full Garden Service

Tree Surgery

## Ochil Green Studio



To find out everything there is to offer at Ochil Green Studio please see Facebook and Instagram @OchilGreenStudio

Combining Massage, Fitness and Pilates Amy helps to bring a bit of balance back to our lives.



Ochil Green Studio - new to Glenfarg offering Massage, Fitness and Pilates, owned by Amy.

Nestled in the centre of the village looking over the green, Amy looks forward to welcoming you to the studio. From deep tissue massage for those aches and pains to something a little more relaxing, to help ease those stresses - how about a neck and shoulder massage incorporating Indian Head Massage, just to give you that much needed time out you deserve.

Mat Pilates Class, Glenfarg Village Hall.  
Mixed level - Monday 12:30pm | Tuesday 9am

"Hello my name is Amy, I am an active person who enjoys the outdoors. I am passionate about keeping people moving, helping to reduce those aches and pains. Please just drop me a message or call to see if I can help you. I looking forward to meeting you soon!"



Contact Amy here  
[bookings@amygornall.com](mailto:bookings@amygornall.com)  
07716433156  
Facebook & Instagram  
@OchilGreenStudio

## Village Fete

This has been cancelled. Nevertheless, a Picnic in the Park is being organised and it is expected, Scottish Government directives pending, that it will be the summer replacement activity.

## Kinrosshire Forum

PKC Cllr Robertson stated that the Speed Initiative (Speed gun trained members of the public, lower road speed limits etc.) will go ahead in due time. However, the Covid Pandemic will limit any dates/time commitments.

## Kinross Action Partnership

Both PKC Cllr Robertson and Watters mentioned that there is a sum of £53000 available for allocation as a Community Investment fund for Covid recovery. The fund is being made public through social media and other routes. More details to follow in due time.

## Drain Trench - hazard

Located at the path exit from/entrance to Wallace Park at the top left hand side towards Duncrievie. This is causing an inconvenience to all who use this route because of the stones and lack of replacement tarmacadam. CCllr Ponton requested that CCllr Pilmer write to Stephens pointing out the problem and requesting that it is reinstated. *Action CCllr Pilmer*

## Friends of Wallace Park (FoWP)

CCllr Ponton stated that £65000 has been sourced for the pathway construction. The Zip Wire activity structure is to be built towards late summer and that a formal opening and dedication



## **TYREFAIR LIMITED**

Unit 11

Bridgend Industrial Estate  
Kinross

There is now a specialist tyre and battery dealer in Kinross that opens every day of the week, and has tyres and batteries at prices to suit your budget. **TYREFAIR** is a family business, with staff that have many years of professional experience in the tyre trade, and you can find them at **Unit 11, Bridgend Industrial Estate, or telephone on KINROSS 865656**. **TYREFAIR** welcomes trade account and offers the following goods and services:

- New tyres for cars and vans
- Guaranteed re-treaded tyres
- 4x4 tyres for business and leisure
- High performance tyre specialists
- Wheel alignment
- Top brand quality batteries
- Puncture and Vulcanised repairs
- Number plates made while-you-wait

**TYREFAIR** has a comfortable lounge, where you can relax while the work is carried out and you can rest assured that we will treat your vehicle with the care and respect that you demand.

**WHY NOT CALL IN, OR TELEPHONE NOW FOR MORE INFORMATION?**

**KINROSS (01577) 865 656**

## **YOU CAN ADVERTISE HERE**

**Advertise your business  
in the**

### **Glenfarg Newsletter**

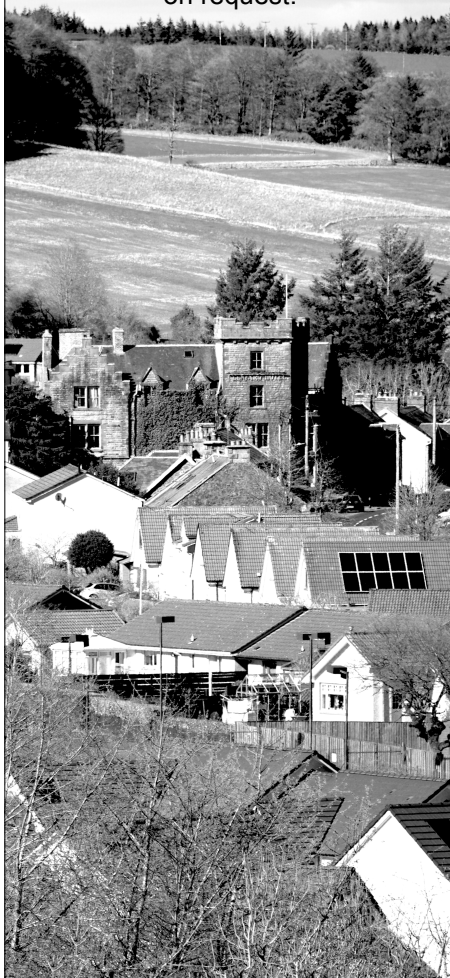
Annual prices - 4 issues

Full Page £70

Half Page £35

Quarter Page £20

Single issue advert prices available  
on request.



event will take place shortly after construction has finished.

Hopefully, the project work for Wallace Park will be completed by the close of Spring 2022.

Meeting closed at 8.45pm

Date of next meeting is Monday 6<sup>th</sup> September at 7:30pm.  
Details of the meeting will be confirmed nearer that date.

## **Glenfarg Grapevine**

### **Community Website**

[www.glenfarg.org](http://www.glenfarg.org)

for all the information about our village  
club contacts / service dates / group and CC minutes etc

### **Facebook**

join the Glenfarg Grapevine closed group  
for instant community news / details of events

### **Noticeboards**

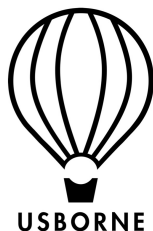
The shop window is the place for general posters  
and the CC noticeboard (round the corner) for CC and Perth Council news

### **Glenfarg Community Centre Website**

[www.glenfargcommunitycentre.com](http://www.glenfargcommunitycentre.com)

Everything that is happening at the Community Centre.

**Joan Cotsford,  
Independent  
Usborne  
Organiser**



**Quality children's books that  
everyone loves**

**For new baby or birthday gifts, fiction and  
non-fiction from birth to adult, homework  
help, jigsaws, sticker books and more!**

**Free local delivery**

**Facebook: @bookhappyjoan  
bookhappyjoan@gmail.com**



*For all aspects of*  
**PIANO TUNING**  
*and repair*  
**David R. Watt**  
**(01577 830 345)**

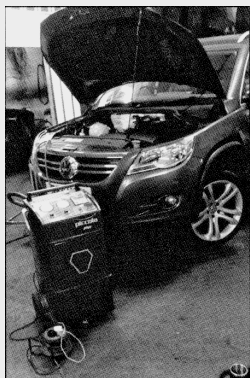
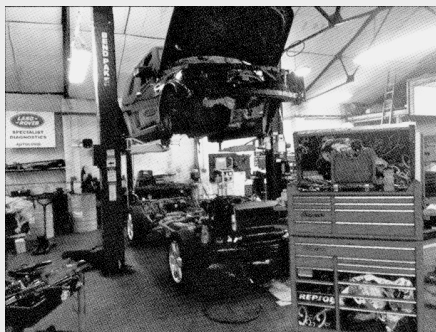
**Genuine Hardwood logs by  
the trailer-load or part load.  
Logs cut, split and delivered  
to suit individual needs.**



**For further  
details ring  
Ewan  
Cheape  
Glenfarg  
830 349**

# Glenfarg Garage

**Advanced Diagnostics  
Servicing & MOTs  
Tyres & Wheel Alignments  
4 x 4 Specialist**



**All Vehicle Repairs  
undertaken including  
Air Conditioning  
Servicing & Repairs**



**Email [office@glenfarg-garage.co.uk](mailto:office@glenfarg-garage.co.uk)  
Tel: 01577 830633  
Main Street, Glenfarg, PH2 9NU**



# ELSTON (Est. 1983) LANDSCAPES

## Landscaping & Stump Grinding

### TREE STUMP REMOVAL SPECIALISTS

Tree and shrub planting

Seeding & Turfing

Paths, Patios & Driveways

Hedge Cutting, Pruning and Tree Surgery

Fencing, Trellis & Pergolas

Garden Drainage

Operated Mini Digger, Dumper & Turf Lifter For Hire

# 01738 850 742

[keith@elston-landscapes.co.uk](mailto:keith@elston-landscapes.co.uk)

[www.elston-landscapes.co.uk](http://www.elston-landscapes.co.uk)

Fully Qualified & Insured





Index of Advertisers	
Home Improvements and Repairs	Andrew Miller Fireplaces . . . . . 43 Andy Law Pest Control . . . . . 58 Binn Skips . . . . . 13 Douglas Miller (plumber) . . . . . 56 Elston Landscapes . . . . . 66 Glenfarg Garage . . . . . 65 John Allison (electrician) . . . . . 52 W. Stewart (landscaping) . . . . . 60 QwertyIT (computer repairs). . . . . 46
Health & Beauty	Ferrier & Mackinnon Optometrists . . . . . 19 Indoor Play Health & Fitness. . . . . 10 Kinross Physiotherapy . . . . . 48 Ochil Green Studio . . . . . 60 Lisa Allison (chiropody) . . . . . 50 Silver Lining Hair Studio . . . . . 43
Shops	Glenfarg Village Store . . . . . 28 John Anderson (Fish Van). . . . . 29 Rainy Day Kitchen . . . . . 41
General Services	Alphavet Veterinary Centre . . . . . 54 Café Biba. . . . . 19 Cameron & Greig Veterinary Surgeons . . . 42 Christine's Puppy Training. . . . . 42 Cyprus Apartment Let. . . . . 11 Earnside UK & Continental Travel . . . . . 7 Gillian Forbes (Stone Carving). . . . . 50 Home Cleaning Service. . . . . 54 IJC Bookkeeping & Payroll. . . . . 41 Letham Farm Glenfarg Logs . . . . . 64 Newhill Granary. . . . . 44 Piano Tuning & Repair . . . . . 64 Pooch Perfect (dog grooming) . . . . . 40 Sonias Ironing . . . . . 54 Stewart Funeral Directors . . . . . 56 Tails & Trails (dog walking) . . . . . 40 Tyrefair Limited . . . . . 62 Usborne (Books). . . . . 64

# General Information

## Doctors' Surgeries

Loch Leven Health Centre, Muirs, Kinross - **01577 862 112**

Daytime emergency number - **01577 865 252** - NHS 24 Out of Hours - **111**

## Library

The van stops at Main Street on every other Tuesday from 12 to 1pm

## Mobile Post Office

Stops outside the Joiner's workshop, Ladeside

**Mon** 11.30am-12.30pm : **Wed** 11.15am-12.15pm : **Fri** 1.15pm-3.15pm

## Recycling Points

**Glenfarg:** Arngask School car park for cans, paper and glass, Arngask School playground for clothing and shoes.

Wallace Park car park for glass.

**Kinross:** Causeway Car Park, Sainsbury's, Station Road, for cans, glass, paper and textiles.

Bridgend Industrial Estate Open Mon-Fri 9am-7pm, Sat-Sun 9am-5pm

**Milnathort:** Thistle Inn, Black Loan for cans, glass and paper

<b>Kerbside Recycling Service: Waste Collection Dates</b>						
<b>Green lid</b> (Non-recyclable waste) <b>Blue lid</b> (Paper, cardboard, cans, plastic) <b>Brown lid</b> (Garden & food waste)						
<b>Glenfarg</b>	<b>September</b>	Green Lid	Fri	10	24	
		Blue Lid	Fri	3	17	
		Brown Lid	Thu	9	23	
	<b>October</b>	Green Lid	Fri	8	22	
		Blue Lid	Fri	1	15	29
		Brown Lid	Thu	7	21	
	<b>November</b>	Green Lid	Fri	5	19	
		Blue Lid	Fri	12	26	
		Brown Lid	Thu	4	18	
<b>Duncricieve</b>	<b>September</b>	Green Lid	Thu	9	23	
		Blue Lid	Thu	2	16	30
		Brown Lid	Mon	13	27	
	<b>October</b>	Green Lid	Thu	7	21	
		Blue Lid	Thu	14	28	
		Brown Lid	Mon	11	25	
	<b>November</b>	Green Lid	Thu	4	18	
		Blue Lid	Thu	11	25	
		Brown Lid	Mon	8	22	