

# *The Glenfarg Newsletter*

## **The Lockdown Issue**



Issue 245 June 2020



## Contents

Editorial.....	3
Contacts.....	4
Village Hall Groups.....	6
Bivouac Challenge.....	7
Arngask Church News .....	8
Rainbow Sheep.....	10
W.R.I. / Thank You.....	12
Cheerful Surprise.....	14
Thought From The Lockdown.....	16
G.D.I.B.....	18
Virtual Youth Orchestra.....	20
Eager Beavers.....	22
Handy Hints.....	26
Glenfarg Community Cinema....	27
Thank You.....	29
Where Would We Be?.....	30
E-bikes.....	32
What Did You Do In Lockdown..	34
Farming In Lockdown.....	36
Eden Crescent.....	40
My Radio Appearance.....	42
The Village Phone Box.....	44
Greenhill Madness Activity.....	46
Community Council Minutes.....	53
General Information.....	74

## Advertise In The Glenfarg Newsletter

You can advertise in the Newsletter for very reasonable rates as below which are annual i.e. 4 issues.

Full Page £70 per annum  
Half Page £35  
Quarter Page £20

Single issue advert prices available on request.

Advert enquiries should be made by initially contacting the editorial team.

### Editor

Robin Watson 830 355  
newsletter@glenfarg.org

### Treasurer

Daniel Horsman 830 067

### Distribution

Glenfarg Village Store 830 823

### Front Cover

Editor

The views expressed by contributors to this newsletter are entirely their own. Publication within this newsletter does not imply that the Editors or Community Council agrees with, or supports, those views. The editor will not be held responsible for any factual inaccuracies, or incorrect inferences drawn.

Advertisements in the Newsletter are accepted in good faith. The Community Council and the editor are not in any way endorsing the businesses advertised in this publication.

### DEADLINE FOR NEXT ISSUE

If you want to contribute to the Newsletter here is how to calculate the deadline. It is published on the 1st March, 1st June, 1st September and 1st December. Copy should be submitted before the 15th of the month prior to the upcoming publication.

email to [newsletter@glenfarg.org](mailto:newsletter@glenfarg.org)

## Editorial

Welcome to the on-line version of the newsletter (The Lockdown edition). Danscot the company who usually prints the paper version of the newsletter have closed down for an indefinite period due to the current pandemic. It is a pity because believe it or not some of the villagers do not have access to the internet and will not be able to access this edition.

However one of the restrictions of the paper version was the need to use black and white for photographs. This was to keep the cost down as colour printing throughout the booklet is hugely expensive. Happily there is no restriction in the on-line version so I have taken this opportunity to publish all the pictures in colour. I have also set the newsletter in the normal way in case the printers opened up again for a print version. The PDF is made as a two page spread emulating the print version.

This edition has some great stories of living in isolation. Emma Cheape, celebrated professional photographer, tells of farming in lockdown with some of her photographs including the much viewed 'rainbow' sheep. Douglas Fraser an active member of 'In Bloom' and the 'Gits' tell of his thoughts on lockdown.

The boys in the Rutherford family have been busy during lockdown. Max has been on the radio and Finlay has been playing violin in 'The Showcase Virtual Youth Orchestra'. It is worth checking out this orchestra on YouTube at [https://youtu.be/4Y0GkQnbC\\_E](https://youtu.be/4Y0GkQnbC_E)

A new feature for the newsletter is the addition of the Arngask School Supplement. Contributions from the various classes in the school required a separate version and are to be found in the accompanying document Arngask School Supplement.pdf.

Our regular contributors never fail to provide. Jim Ashton has an interesting article on the rise of the beaver population in Scotland, Alison Harrison starts a new series of handy hints and there are more exploits of the scouting group from Christine Morton.

As a recent owner of an e-bike I have written some facts about this revolution in cycling.

Finally let me say a word to the gentlemen in the Village Store for their efforts in the community to keep us supplied with provisions. Thank you my friends.

To you all, stay safe.



Robin Watson

e-mail: [newsletter@glenfarg.org](mailto:newsletter@glenfarg.org)



Contacts		
Service/Organisation	Contact Name/ Email Address	Telephone
<b>Community Council</b>	Chairperson: Margaret Ponton	830 611
	Secretary: Ian Pilmer secretary@glenfarg.org	830 817
<b>P&amp;K Councillor</b>	Cllrs. Barnacle, Watters, Purves and Robertson	See P&KC website
<b>Police</b>	Non emergency contact number	101
	Crimestoppers	0800 555 111
<b>Household Utilities</b>	Scottish Water Helpline	0800 0778 778
	Scottish Hydro Electric Helpline	0800 300 999
<b>Dog Warden</b>	Kirsteen Mackenzie	01738 476476
<b>PA Contact</b>	Mark Crossey	830 201
<b>Arngask Church</b>	Bill Macpherson (Session Clerk) Session.Clerk@ada-church.org.uk	830 430
<b>Arngask School</b>	Suzanne Miller (Head Teacher)	867 250
<b>Accordion &amp; Fiddle</b>	Stewart Smith isobelsmith45@btinternet.com	830 6296
<b>Baby &amp; Toddlers</b>	Catherine Mason catherinemason@hotmail.co.uk	07583 022 608
<b>Badminton Club</b>	Alan Clark	830 246
<b>Badminton Ladies</b>	Jan Macpherson	830 430
<b>Beavers</b>	Christine Morton	830 210
<b>Bowling Club</b>	Karen Parker glenfargbc@gmail.com	830 529
<b>Bridge Club</b>	Evelyn Brockbank	830 713
<b>Brownies</b>	Jan Pedley glenfargbrownies@gmail.com	830 195

Service/Organisation	Contact Name/ Email Address	Telephone
<b>Chair Yoga</b>	Caroline Waring	830 239
<b>Cubs</b>	Robert Morton rmorton956@gmail.com	830 210
<b>Curling - Men's</b>	Lorne Findlay	830 441
<b>Curling - Women's</b>	Margaret Jenkins	830 453
<b>Folk Club</b>	Philip Ponton info@glenfargfolkclub.com	830 611
<b>GDIB</b>	Kate Armstrong	830 343
<b>Community Cinema</b>	Janet Watson	830 355
<b>Glenfarg Oil Buying Syndicate</b>	Tom McAulay gobs@glenfarg.org	07786 705261
<b>Knit &amp; Natter</b>	Ineke Watt	830 345
<b>Neighbourhood Watch</b>	Linsey Penman	830 549
<b>Old Folks Association</b>	Philip Ponton	830 611
<b>Riding School</b>	Angela Stocks	830 262
<b>Scouts</b>	Robert Morton robert.morton1@tesco.net	830 210
<b>SWI</b>	Margaret Scott	830 369
<b>Tennis Club</b>	Tim Corcoran tim@taraw.plus.com	830 879
<b>Total Body Circuit</b>	Julie Ramsay jrinsanity@gmail.com	830 370
<b>Village Hall</b>	Tanya McKibbin glenfargvillagehallbookings@gmail.com	07984 275756
<b>Website</b>	Janet Watson <i>editor@glenfarg.org</i>	830 355
<b>Wine Club</b>	David Aird	830 370
<b>Zumba</b>	Gale Paterson	07823 334 476



# A Village Hall for All

Day	Time	Organisation
Monday	9.30am - 11.30am	<b>Baby &amp; Toddler Group</b>
	6.00pm - 7.30pm	<b>Cubs</b>
	8.00pm - 10.00pm	<b>Ladies' Badminton</b>
	7.30pm - 9pm <small>1st Monday every other month</small>	<b>CC Meeting</b>
Tuesday	9.30am - 10am	<b>Metafit</b>
	5.45pm - 6.45pm	<b>Beavers</b>
	7.30pm - 9.00pm	<b>Scouts</b>
Wednesday	6.00pm - 7.30pm	<b>Brownies</b>
	8.00pm - 10.00pm <small>In winter</small>	<b>Mixed Badminton</b>
	7.00pm - 11.00pm <small>1st Wednesday of month</small>	<b>Accordion &amp; Fiddle Club</b>
Thursday	10am - 12 noon	<b>Coffee Morning</b>
	7.30pm <small>2nd Thursday Sept to May</small>	<b>WRI</b>
Friday	10.00am - 11.00am	<b>Chair Exercise</b>
	7.30pm - 10.00pm <small>2nd Friday Sept to April</small>	<b>Community Cinema</b>

To check on the Village Hall bookings, go to the village website  
[www.glenfarg.org](http://www.glenfarg.org)  
 and look at the on-line calendar under 'Hire the Hall'

# Bivouac Challenge



The next scout group challenge is to build and sleep in your own bivouac in your garden. At this time of year there is little opportunity to use traditional bivouac materials such as branches and bracken. The challenge is to use a 2.5m square piece of plastic to create your shelter and sleep in it for at least one night. Parents can join in the challenge too. The picture shows Christine trying out the prototype for size.







## Church News

Amid all the concerns about 'lockdown' and the worrying pandemic which is spreading its way around our world, there have been moments of light and humour too. Near the start of the Covid-19 panic, when shops and supermarkets were running out of all the basic commodities, I was given the following report: having tried countless times in vain to get an elusive delivery slot, my parishioner eventually succeeded in getting a home delivery from her favourite supermarket. She was so very excited at finally being able to obtain not just necessities like toilet roll but also a few treats too, like crisps and gin. The van duly arrived, the items were cheerfully delivered, but my friend was aghast. The supermarket had substituted two boxes of sheets of pasta (with which to make a lasagne) for the much needed and pretty essential toilet paper. Amazed that anyone could make a connection between two such diverse products, she threw her hands up in the air in disbelief. The pasta was unceremoniously consigned to the back of her kitchen shelves where it languished. As the days and weeks progressed, it soon became apparent that the next greatly sought-after product on the supermarket shelves was pasta. It couldn't be obtained in any form for love nor money. Suddenly, the weird substitution took

on a new value and became a cherished, highly-prized store-cupboard item.

One of the effects of the lockdown and the other desperate measures required to curtail the spread of the virus, has been the ability to change the way we value all sorts of things. Things that were taken for granted before have assumed greater importance. And values in our society which were disregarded and thought of as unimportant and even as weakness in some quarters, have acquired much higher significance. From a friendly telephone call, to the offer of collecting medicine, to a kind delivery of essentials by a local shopkeeper – all these simple acts have taken on a value way beyond our expectations. Those who were overlooked, like our NHS workers, or who keep our key services going are likewise finally given the thanks and the tangible and warm appreciation they always deserved. And other fundamental aspects of our lives, like human company, the touch of a friend and the prospect of a cuddle from a grand-child are now considered beyond value. Like the toilet rolls and the pasta sheets, our whole value-system has been re-calibrated. Key Christian principles (and those of other faiths too) like love, kindness and self-giving to others are now amongst the things that really matter. So despite the horrors of these past few weeks, I think we have all witnessed daily acts unfolding in our own communities which have miraculously transformed our system of values for the better.

Keep safe and well.

With my kindest thoughts and prayers.

Rev Stan May 2020

Due the current Coronavirus the Church Building remains closed. Virtual Church Services can be access via the Facebook Page ..

Abernethy and Dron and Arngask Church

Rev Stan Kennon can be contacted on 01738 850194, or by e-mail for non-urgent enquiries at [Minister@ada-church.org.uk](mailto:Minister@ada-church.org.uk)/

Session Clerk Alex Johnston can be contacted on 01577 830776 or [Session.Clerk@ada-church.org.uk](mailto:Session.Clerk@ada-church.org.uk)/



# Rainbow Sheep story



Mum and I had a quiet afternoon in the lambing sheds when the idea came to us, we had seen everyone else's rainbows in their windows and decided we would pop a field of eight rainbow sheep in a roadside field to cheer up walkers on their hour exercise.

All the ewes get a spray mark of a number on them and their lambs so we can identify them and match them up back in the fields if there are any problems. So on the opposite side to their numbers we sprayed rainbows on each of the ewes (we didn't do the lambs as we didn't want them smelling too strongly of spray marker and risking their mums rejecting them) and they seem to have attracted a lot of attention featuring in national newspapers and STV news!

## 2 BEDROOM APARTMENT TO LET IN PAPHOS CYPRUS



**Lovely 2 bedroom garden apartment to rent.**

**About 3km from Paphos Harbour and only 900m from the sea.**

*Main bedroom has a big double bed, plenty of cupboard space, and a patio door leading to a small garden, with patio table, chairs, and parasol for you to dine "al fresco".*

*Second bedroom has 2 single beds, and, again, plenty of storage.*

*Fully furnished and very comfortable, with air-conditioning, excellent kitchen area (fridge freezer, washing machine, oven and hob etc)*

*The bathroom has WC, bath and "over-bath" shower.*

*Plenty of towels, bedding etc all in apartment, so no need to carry that extra luggage. 2 communal pools, plus a children's pool, set in lovely gardens, and close to bus route and local tavernas. Nearest taverna is less than a 5 minute walk away! Only 20 minute drive from Paphos airport and collection can be arranged.*

*Realistic rental rates, as I am only looking to cover ongoing bills and expenses.*

**For more information contact**

**Lawrence on 07836 578563, or e-mail lozzenge2@gmail.com**

## Glenfarg W.R.I.



On the 12<sup>th</sup> of March, our last meeting just before the lockdown the visiting Institute decided not to come.

Entertainment was by our own members when we had a Quiz, and as the Ramage Dawson and Elizabeth Gardiner competitions had been cancelled the Drama group did their play 'The Tale of the Piano'.

### Competition winners

Place Mat--1<sup>st</sup> Allison Messenger; 2<sup>nd</sup> Diane Fraser; 3<sup>rd</sup> Margaret Scott.

Smoked Mackerel Pate- 1<sup>st</sup> Alison Harrison; 2<sup>nd</sup> Sheena Chisholm.

Flower of the Month- 1<sup>st</sup> Alison Harrison; 2<sup>nd</sup> Allison Messenger; 3<sup>rd</sup> Margie Davidson.

The Catherine Fairweather competition has been postponed until we get back to normal.

The Centenary Lunch has been postponed until further notice.

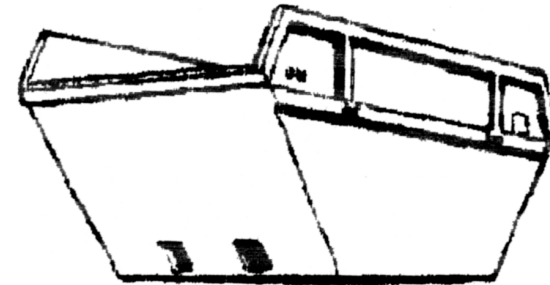
## Thank You

Sincere thanks from Liz Carswell and family for the kindness and support we have received following John's death on April 18<sup>th</sup>. The many messages, cards and telephone calls from friends and neighbours have been a great comfort to us all and very much appreciated. A special thank you to the Rev Stan Kennon for his comforting and uplifting service as we laid John to rest at Arngask Cemetery on Wednesday April 29<sup>th</sup>. A service to celebrate John's life will be arranged whenever it is possible to do so.

With our gratitude and good wishes during these difficult times.  
The Carswell Family.



# Binn Skips



Binn Farm • Glenfarg • Perthshire  
PH2 9PX

Tel. 01577 830 833  
Fax. 01577 830 488



## Cheerful Surprise



Saturday didn't seem special - boring even, until Jenny Rutherford knocked on my door and gave me a present. A ceramic bird feeder in all the colours of the rainbow, to plant outside my kitchen window.

Finlay and Max had been busy again. What a cheerful happy idea fired by mum in the kiln. Well done boys and thank you very much.

Vivien





Ding Dong,  
AVON calling  
and still going strong after more than  
40 years in Glenfarg!

You can have a wide range of cosmetics, toiletries, perfume, gifts  
and much more delivered to your door:  
just go to [www.janmakeup.co.uk](http://www.janmakeup.co.uk),  
place your order, select 'representative delivery' and I will deliver it  
at no extra charge.

To see a 'real' brochure, or for more information, contact  
Jan Macpherson, Lyndhurst, Ladeside  
01577 830430, 07709 015305



### FERRIER & MACKINNON

OPTOMETRISTS

We've been proudly delivering excellence in  
eyecare to the local communities of **Glenfarg**,  
**Milnathort**, **Kinross** and for over 25 years.

Book your **FREE NHS** eye test with  
your trusted, local optician

[www.fmoptom.com](http://www.fmoptom.com)

74 High Street KINROSS 01577 864009	27/29 Chalmers Street DUNFERMLINE 01383 721502
---	--

Practices also in COWDENBEATH, BURNTISLAND,  
INVERKEITHING, NEWPORT-ON-TAY and LOCHEE

Find us on 



## Thoughts from the Lockdown



A few years ago I decided to take early retirement from a hectic working life and slow the pace. During these three years I've re-discovered the village of Glenfarg that I've lived in for fourteen years but never had the chance before.

Now, in the middle of the global pandemic and national emergency, I feel that my adjustment to a slower pace and filling my days with odd jobs has actually prepared me for the environment we find ourselves in.

This artificial existence, whilst deeply worrying, is also I believe giving the world an opportunity to re-calibrate the way we go about our lives and in Glenfarg the atmosphere is different.

Being the oldest paperboy in the village (according to Mark), has allowed me to meet new people and also take in the peace and quiet that has come over the village. From the daily walk and the chance encounters it's great to chat and exchange opinions with people you've seen before but never had the chance to talk to.

From these conversations a common denominator is the appreciation of how lucky we are to live in such a beautiful part of the country and also the fantastic community spirit. This was highlighted when asking for help to deliver leaflets at the outset of the lockdown. The number of volunteers that came forward would have filled the requirement twice.

Speaking to the guys in the village shop and watching Facebook it's clear that any time we have a 'shout out' for assistance there is no shortage of helpers.

Isn't it also lovely to see the exchange of ideas and advice throughout the village and surrounding area? It makes you proud to be a part of the community.

Fortunately the weather during the lockdown has been brilliant, our daily routine could have been very restricted if it had rained for the last seven weeks. The manicured gardens and shiny clean cars speak for themselves.

Speaking to my kids, it's lovely to hear about them taking the chance to have quality family time in their prescribed exercise allowance. Jokingly, one of them questioned if the good weather was not 'a greater being's way of trying to make this terrible situation more tolerable, a bit like the film 'The Truman Show'.

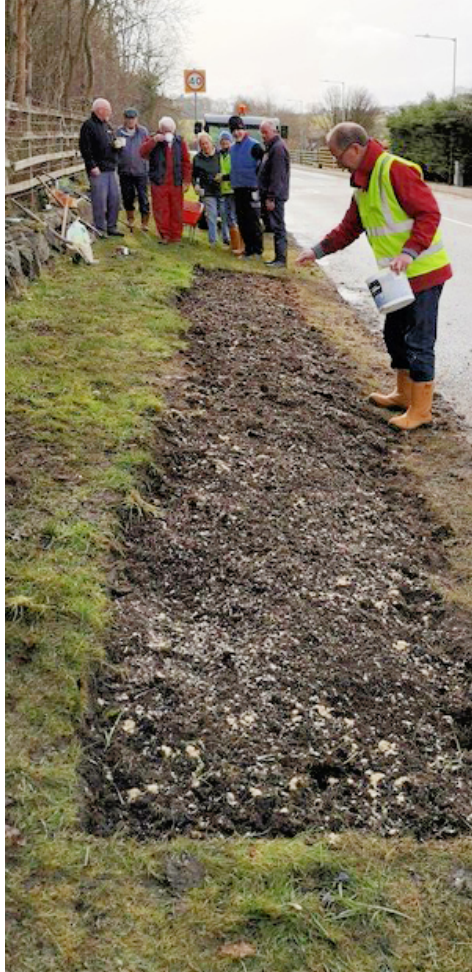
Another aspect of the lockdown is the new shopping regime. At first I, like so many, was worried that stocks wouldn't last as no one seemed to know what the big picture looked like. The panic buying was troubling and brought out the worst in some people who were just worried about the future. Now however I've got to say that I'm almost enjoying the calmer and quieter shopping regime which gets done on a 'needs must' basis about once every two weeks. The nonsense buys have gone and the budget seems to go a lot further. The cheap fuel in the petrol stations is great but frustrating because I am using hardly any fuel. Wouldn't it be good if it could stay like this from a purely cost of living point of view.

The other side of the coin is bleaker unfortunately, with companies struggling to survive and working incomes being slashed. From this point of view, the sooner the lockdown is lifted the better. I just hope that when we do return to our regular lives we hold onto some of the lessons and values that we have learned being forced to stay at home.

Douglas Fraser.



# eLenfale and DuncRieVie IN BLOOM



The plug plants were ordered, the volunteer greenhouse owners were signed up to grow on plants, the pond clearing day was planned, the grass cutting rota was agreed and watering rota was being drawn up when WHAM - stop, stop, stop! No group activities, no plug plants and no insurance cover for equipment.

Since GDIB was “born” in 2005 the volunteers have faced many obstacles but nothing like Covid-19, and its implications meant much of our “norm” required a rethink. Could we have a village with no colourful displays and if not how could we do something without risking the health and wellbeing of our citizens?

Through our local social media GDIB asked volunteers to take on the responsibility of safely caring for a planter near their home and several planters were adopted in this way. The displays in these planters will be varied, interesting,

colourful and joyful but above all, Community led.

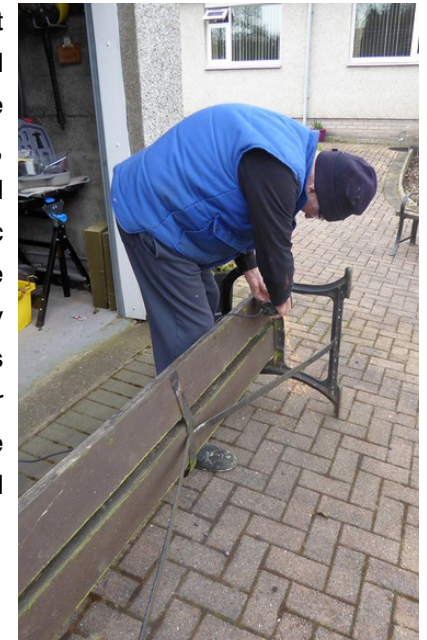
But perhaps every cloud has a silver lining and on a positive note this “interlude”



has given some of our hard working team a breather and has allowed us to carry out some other tasks e.g. refurbishment and enhancement of hanging baskets and troughs ready for next year. Also one of our team, Douglas Fraser, created a wonderful tribute to the lads in the Village Store. Another positive has resulted from the lack of grass cutting meaning that the dandelions have flourished, a great boost

for our bees. The bees are also going to benefit from the patch of wild flowers that was created on the South verge pre-lockdown. An unsafe raised section of the verge was removed and, whilst most of the lads enjoyed a cuppa, David Aird sowed the wildflower seeds which Eric Hayward had carefully mixed and weighed. The refurbishment of benches was interrupted by lack of timber supplies but the metal frames were refurbished by John, Eric and Brian in their own garages ensuring that, post lockdown, the benches will be reinstated in their original locations.

Kate Armstrong





## The Showcase Virtual Youth Orchestra



I play the violin and when everything was suddenly cancelled in March I was really disappointed that I couldn't play the planned concerts and events with my orchestras that I had been practising for.

It has been a sad and confusing time but there has been an unexpected surprise. I have found new musical opportunities that would not have been available without lockdown. I have found a few virtual orchestras!

With my mum and my brother I played 500 miles with the Nevis Ensemble from Scotland (we are about to do an international Auld Lang Syne with them!!), that was funny because Max had only learned three notes and we had to tell him when to play them – it is worth looking that video up it was really funny (<https://youtu.be/ujjyYdfNBXM>) My mum and I played a David Bowie piece with famous saxophonist Jess Gillam as part of her Virtual Scratch Orchestra which included some famous musicians. And every week I get a new tune through a virtual youth orchestra I joined. It is brilliant fun!! I couldn't have done all these things normally.

The Showcase Virtual Youth Orchestra was formed from an orchestra that met in Southampton but lockdown ended their rehearsals too, so they set up a virtual orchestra that was open to any children anywhere. I joined a few weeks in and we have played some amazing pieces and have even been on TV a few times!





# Eager Beavers

The phrase 'Eager Beaver' is relatively new in our lexicon of language and is thought to have originated in the early 1900's in the armed forces in North America to describe very eager recruits who were willing to do anything to impress their commanding officers. Nowadays it tends to be used in both a complimentary and derisory context.

The animal from which the name is coined has always been noted for its industriousness and in present day Scotland, particularly in Perthshire, we don't need to go far to see examples. This photograph was taken recently at Willowgate fishery, just below Friarton Bridge.

The British population of beavers was driven to extinction in the 1600's due to being hunted for their pelt, their meat and castoreum, a secretion used in perfumes, food and medicine.

In 2001 a party of eight people in two canoes were on the River Earn at its confluence with the Farg when they saw a beaver emerge from the water and make its way up the banking. Seeing a beaver was a huge surprise, given that they were supposed to have been extinct in Scotland for 400 years!

The return of the Beaver was a well-kept secret for a few years but around 2010, more and more people and organisations with an interest began to ask questions. The National Species Reintroduction Forum made a decision at that time, proposed by Scottish National Heritage, that the beavers in the Tay should be trapped and removed to Zoos. Only one beaver was trapped however and it subsequently died in Edinburgh Zoo. The trapping was stopped in 2011 before the breeding season and not resumed.



So where did they come from? There is no definitive answer to that question but the most likely scenario is that beavers were introduced illegally or escaped from a private collection and since that time the beaver population has grown. Although the exact number is not known it has been estimated that there are over 400 beavers in the Tay catchment area alone. Beavers are now also found in the Forth catchment area and there is a colony of beavers in, of all places, the River Otter in Devon!

In 2009 a partnership project between the Royal Zoological Society of Scotland, the Scottish Wildlife Trust and host Forestry Commission Scotland undertook a time-limited, five-year trial reintroduction of Eurasian beavers to Knapdale, Mid-Argyll. The beavers used were caught in Telemark, Norway, a region with a large and healthy population of wild Eurasian beaver. The Scandinavian beaver is considered to be the closest type to those once found in the UK and the Telemark terrain has many similarities with the west coast of Scotland. All beavers were only released into the Knapdale Forest after completing the statutory quarantine period.

Beavers can benefit nature. As 'ecosystem engineers' their activities can create wetland habitats, improve habitat structure and diversity and enhance biodiversity. They can also alleviate flooding, improve water quality and bring socio-economic benefits. They are a





keystone species that can unlock a huge range of benefits for people and wildlife. By creating and improving natural habitats including wetlands and native woodland, they provide a home for many other species. By slowing the flow of water, their dams also reduce the likelihood of flooding downstream, and their presence creates new opportunities for wildlife tourism.

However, given that the last time beavers roamed freely in Scotland was 400 years ago it is fair to say that the land has changed extensively in that time and much of what might have been natural habitat for beavers then is now prime agricultural land and that creates a number of problems for farmers and land managers. Experts at Edinburgh Zoo carry out post mortems on beavers and by 2016, of the 23 they examined, it was found that 21 had been shot.

As the number of beavers in the Tay catchment area continued to increase, pressure mounted from interested parties on both sides of the debate and 1st May 2019 the Scottish Government finally decided that the species should be allowed to expand its range naturally and beavers in Scotland were deemed protected by law as a European Protected Species. The legislation contains provision for landowners to obtain free expert advice and assistance on mitigating any negative effects that Beaver re-introduction may have on the land.

However, despite the legislation, the situation regarding beavers still seems to be in a state of flux and concerns have been expressed that in Tayside beavers are being culled.

As recently as 17<sup>th</sup> May 2020, Sarah Robinson, Director of Conservation at the Scottish Wildlife Trust issued a statement saying “‘It would be deeply concerning if a substantial proportion of the beaver population has been culled in Tayside this year. The number of beavers in Scotland is still relatively small and localised, so a heavy cull could put the future of this protected species at risk.’ The trust believes that shooting is an absolute last resort and she went on to say “‘More than 100,000 hectares of core beaver habitat have been identified in Scotland. Many areas, such as the Cairngorms, could easily accommodate them with relatively little conflict. There are also opportunities to reinforce the population on the edges of their existing range, and bridge the gap between the populations in Tayside and Argyll. Therefore, we believe the national strategy should include the potential for further translocations of beavers. This would both allow the expansion of their range into other parts of Scotland, and further reduce the need to cull animals in Angus and Perthshire.”



This issue, like most other's at this time of the Covid pandemic, is probably on the back burner but I would hope that both sides can come together and work out a sustainable plan to re-integrate these industrious animals back into the Scottish landscape.

In the meantime if you want to try and see beavers or evidence of them then you only need to go to Bridge of Earn where there have been many sightings, or perhaps you know of beavers closer to this area? Once the lockdown is relaxed and we can travel a bit then a trip to Dunkeld and a walk up to Mill Dam will reveal abundant evidence of how eager and busy our Scottish beavers can be!

# Handy Hints

Do you have a handy hint you could pass on? Email it to  
[newsletter@glenfarg.org](mailto:newsletter@glenfarg.org)

## Rich Short Crust Pastry with No Mess

When making short crust pastry, rather than wrestle with it all breaking up, or over-flouring, or cracked edges, do it the easy way. No crumbs under your fingernails, no mess, perfect results. Lay a piece of cling-film approx. 90 cms (3') long on a work surface. As soon as your pastry is starting to come together, whether hand-made or using a mixer, tip the crumbly mixture on to the cling-film, just to the right or left of centre. Lay the other half of the cling-film over it, but make sure there's a clear margin all the way round, i.e. don't simply fold it in half you need a gap beside the fold. Now, keeping the mixture inside the cling-film, mould it into a smooth ball, press down with your hand, then roll out with a rolling pin. When it is just over the size of your quiche dish, open the clingfilm, put one hand under it and hold it over the dish, pastry side down. Gently mould it round the edges and as your fingers are over the clingfilm, you will find this easy to do neatly and quickly. Rather than trim away excess (there shouldn't be much if you measured it accurately), just press down the edges into the dish, still using the cling-film to help you. Discard the cling-film, prick the pastry all over with a fork and chill it for 30 minutes in the fridge, or it can be wrapped and frozen at this stage.

## Egg Whites

I make quite often rich shortcrust pastry and hollandaise sauce, both of which use egg yolks. So I freeze the whites, 2 or 3 at a time, in small glass jars with lids. (Sainsbury's spice jars are the perfect size.) 2 egg whites will make a good sized batch of mini meringues, probably around 40 (20 pairs). If you sometimes need a very small quantity of egg white, say for sugar-craft or glazing biscuits, pies or scones, then freeze your egg whites in ice cube trays. One egg white goes a long way as it can be split into several cells of the tray. Once frozen, decant into a polythene bag to keep air out and defrost as required.

# GLENFARG COMMUNITY CINEMA



Hello to all fans of Glenfarg Community Cinema. Whilst we don't know when we will be in a position to "dim the lights" you can rest assured that we will be opening the doors as soon as we are able. In the meantime, the committee met recently, via Zoom, to start planning for our next season.

We have enjoyed great success since the first screening in 2012. The convivial atmosphere makes for a good and inexpensive evenings' entertainment; and it's only £5!

Even if you have seen the film before, an evening at the community cinema is a great chance to catch up with friends, and maybe even make new ones. There is nothing to beat the 'Big Screen' and our cinema is now investing in improved acoustics for a higher quality sound experience. And don't expect to pay big cinema prices for your ice-creams!

## We now need your help!

Our community cinema is for you. Our patrons, regular and occasional, are key to what we do and we value your input. So what is needed? Your views and comments please, there are some prompts below to help you.

- What is your favourite genre?
- Is there a specific film or films you would like us to show?
- Would you come to a film with subtitles?
- Do you like the format of a halftime break?
- Do you like the 'Special' events where food is involved?
- What about "sing-along" films?
- Do you have any other suggestions - all are very welcome!

Any input, large or small, would be really appreciated by us.

E-mail [philip.ponton@btconnect.com](mailto:philip.ponton@btconnect.com)

Keep safe and we look forward to seeing you all, hopefully this year!

Regards The Committee.





# Glenfarg Village Store

**Opening Hours from Monday 11 May**

**Monday to Saturday 9am to 5pm**

**Sunday 9am to 3pm**

**Always here for you when you need us.**

**Self-isolating? Need help with shopping  
or picking up a prescription? We can help.  
email [glenfargshop@gmail.com](mailto:glenfargshop@gmail.com).**

**Stay Safe!**



Take a walk down Main Street and you will come across this floral tribute.

It was made up by the combined efforts of the GITs (Glenfarg Improvement Team) and GIDIB (Glenfarg & Duncricvie In Bloom).

This tribute says it all....



## Where would we be without Community?



Back at the start of the year, life was continuing more or less as normal for us all and then the realisation came that we all had to accept an incredible change that we couldn't have imagined.

We heard news bulletins that were inconceivable and everyone was asking how this would all affect us. The method of coping for the majority of people was to buy as many toilet rolls as humanly possible! Initially people were making decisions based on self survival.

This was followed by a realisation that community would be crucially important and corner shops would be used far more than ever before due to lockdown and self isolation.

Didn't we then realise how lucky we all are? Not just to have a corner shop but to have such a wonderful team of people who put the community first and pulled together to keep our people safe.

The Grapevine Facebook page began to be filled with offers to collect shopping, prescriptions and anything that may be needed.

Russell, Mark & Joe put their thinking caps on and found ways to change the service they provide to the Village in order to keep us supplied and more importantly, themselves safe. Members of the community volunteered to join a delivery team to ensure everyone's needs were met.

The boys have embraced the lockdown by ensuring that the local community has been well served during these difficult times. They have made huge efforts to keep the store stocked up and to safely keep it open over the last few weeks. They have also been working with a team of community volunteers to provide home deliveries to those who have been self-isolating or unable to get to the supermarkets. A typical day starts around 4.30am when the Papers, Milk & Rolls are delivered and the shelves are stocked for the day ahead. The emails are then checked, the home deliveries are prepared and when the shop is closed they are out delivering.

We continue to enjoy locally sourced products including Bellfield Organic Vegetable Bags, Honey from Cloverlea, potatoes from Merchants Doig and Baillie and for those of us who enjoy authentic food we have been able to enjoy Indian Takeaway Meals from Praveen Kumars Tabla. The most recent addition is Hunters of Kinross, the local Butcher. Some examples of excellent local produce that we have all had access to on top of our general day to day supplies.

The village store and the boys that run it have been a godsend during the lockdown. But when it's over and we return to our "normal" lives, we have to remember that for our local store to survive we must continue to support it.

I am sure that the residents of Glenfarg and the outlying areas would like to join us in saying a heartfelt thanks for everything that they do. When we stand outside on Thursdays at 8.00pm to clap our key workers, we need to remember the people who have worked tirelessly to keep us all Safe and provided for.

Russell, Mark & Joe - you are simply the best! Thank-you.

Elaine Morton & Margaret Ponton



## E-Biking

I was a keen cyclist in my youth and completed several intrepid journeys including Glasgow to Inverness and many trips to Argyll. In my retirement I was looking for some fun exercise but with all the hills around Glenfarg cycling wasn't my first choice. Then I heard about e-bikes. Hills are no longer a problem and I am now a happy cyclist again.

Here are some facts about e-bikes

### 'Riding an e-bike isn't cheating'

Electrically assisted pedal cycles, also known as pedelecs, are standard pedal cycles fitted with a battery and electric motor.

When you pedal, the motor kicks in to take some of the strain. There are several levels of assistance: Eco, Tour, Sport, and Turbo.

Under regulations in England, Scotland and Wales, they must have a maximum power output of 250 watts and must not give assistance if the speed exceeds 15.5mph (25kph).

Prices range from just under £400 to £5,000.

According to Halfords, up to 60,000 e-bikes are sold in the UK a year, compared to three million standard bikes.

Olympian Chris Boardman said 30% of people who buy e-bikes from his range wouldn't have bought a bike otherwise. He says they are no longer seen as "cheating" at cycling.

The first Union Cycliste Internationale electric mountain bike world championships were held on 28 August and 50 people took part.



# Earnside

## U.K. & Continental Travel

Tel: 01577 830360

E mail: [info@earnside.com](mailto:info@earnside.com)

Website: [www.earnside.com](http://www.earnside.com)

## What did you do in the lockdown?

Well, it seems that a lot of people got out their sewing machines or their knitting needles and put them to good use.



### Making Face Masks



Instructions for how to make face masks out of T-shirts were found on the UK government website at [www.gov.uk/government/how-to-wear-and-make-a-cloth-face-covering/](http://www.gov.uk/government/how-to-wear-and-make-a-cloth-face-covering/)

Any material will do as long as you can breathe through it, and it can be washed regularly at 60 degrees. Here are a selection of brightly coloured face masks made by Tara. So they don't need to be boring white.

### Knitting to help the staff at PRI

We heard through Michael and Jim McHardy that the staff at PRI found their face masks uncomfortable to wear since the elastic pulled on their ears. A knitted device with buttons to hold the elastic was designed and the knitters got to work. Michael was finally able to deliver around 150 of these to the hospital. Thanks go to Fiona Watt, Sheena Chisholm, Margaret Swan, Helen Clark, Ann Black, Kareen McGregor, Esmae Malcolm and many others.



Tara at her kitchen table, making masks for relatives and friends.

### Knit a sweater for a Penguin

Another of Alice's ideas! But why do penguins need jumpers? Well it seems that oil pollution is a serious threat to little penguins. When they are brought into the rescue centres, a jumper is put on them temporarily to prevent them pecking at their oily feathers before they are cleaned. So a constant supply of jumpers is needed. You can find the pattern at <https://penguinfoundation.org.au/assets/Uploads/Penguin-rehabilitation-jumper-pattern-AUGUST-2019.pdf>

### Making scrubs

A common activity during lockdown was 'going through the wardrobe'. But what to do with those unwanted clothes, with the charity shops closed? Alice Blaikie had the idea to turn the summer dresses into 'scrubs' - the clothing worn by medical and care workers. So out came the sewing machine. Look out for the staff at the Milnathort care home in jazzy, brightly coloured outfits.





## Farming In Lockdown

As a farmer's daughter, life during lockdown hasn't really been much of a change for my family compared to 'normal' life pre-lockdown. I, like many, have found myself furloughed from my job as a full time photographer. However I have been very fortunate that this means I now have the time to help on the farm at our busiest time of the year.

You think of spring and thoughts of new life and growth come to mind, or they certainly do for me, and there has been plenty of both on our farm over the last few weeks.



The start of our lambing coincided with the beginning of nation-wide social distancing advice. We are normally joined for lambing by a team of vet students to help us spread the workload and in return, provide them with valuable hands-on experience. However, Covid-19 put a halt to any students coming onto the farm so we could protect our staff and our family. I am normally too busy with work during lambing and therefore can't get time off to help at home, so with a lack of students and my new found spare time, I was straight into the lambing sheds. The 4.30am alarms and long days that regularly clocked over 30,000 steps soon became the new norm!

Lambing and calving are now drawing to a close, after a very few busy weeks which will have seen over 2000 lambs and 30 calves (most of our calving is done in the autumn) enter the world. We have also finished planting all our spring barley and still have turnips, rapeseed, kale, and some grass to sow, but we are holding off until we get some rain to help germinate the seed.



Glenfarg is lucky to be surrounded by beautiful countryside, which hosts lots of different ways of farming, from arable to beef and sheep and dairy, all of which can be found within a three-mile radius of the village.

Our arable farmers have been very busy over the past few weeks putting this year's potato crop and spring barley in the ground. While they have been blessed with one of the driest April's providing a beautiful sunny spell to get everything planted, they are now starting to struggle with the lack of rain. Both winter and spring crops are getting desperate for some rain to allow them to keep growing and not die off due to lack of water. For as anyone who knows a farmer will know, we all love to complain about the weather!





Meanwhile our local dairy farmers are also managing to continue work as normal. They have been very busy getting their first cut of silage in and hope to get another three cuts throughout the summer to provide enough feeding for the cows in the upcoming year. Although the dairy hasn't been too badly affected, they have been asked to reduce their production by 3% by milk processors, due to issues with oversupply in the market. This has been caused by the closure of the hospitality industry which 10% of Scottish milk supply is destined for, leaving surplus milk needing a home.

As a whole, farming has continued as normal, not just around Glenfarg but up and down the country, to provide for the nation and keep supermarket shelves full. We love that so many people are now getting to spend more time in the countryside and appreciate just how beautiful our 'office' is! However, we ask you to do so responsibly, keep your dogs on leads and remain out of fields and farmyards, for your safety and ours.

If during this lockdown you have wondered how you can support farmers, all we ask is you buy local and buy British produce that is fresh, seasonal, and sustainable.

Stay home and stay safe.

Emma Cheape

*(All Photographs in this article by Emma Cheape)*

## Sunflower Challenge

The scout group is running a sunflower and climbing nasturtium growing challenge for all the youth members. Those members living in the village were delivered compost, small pots and seeds. Those living outside the village received their seeds by post.

Some green fingered scouts have claimed their prizes for getting the seed to the first pair of leaves stage. Prizes will be awarded to those who get pairs of leaves then flowers on their plants. There will be a prize for the tallest sunflower for each age group. By late summer there should be lots of cheerful sunflowers to be seen over walls and hedges.





## Eden Crescent...

The paint had hardly dried, gardens very much in progress, friendships still to be made and one family had only literally moved in...then bang...LOCKDOWN!

Like many streets, we rose to the challenge by compiling an email list, whereby we could communicate, support one another, cascade information and share shopping. This proved a huge success, in spite of many people not knowing each other. Emails circulate freely and the sharing of shopping allows the opportunity to limited interaction in public places. It may just be the

occasional shop but every less visit by an individual keeps us all safer. I believe the emails have also played a part in strengthening this new wee neighborhood.

Our wider neighborhood in Glenfarg and Duncricvie have been equally supportive. When Eric and I started our garden, garden centers were not fully established in deliveries and we needed plants. After a request on the Grapevine, many plants were given, just through genuine kindness and from some people we had never met before. This kindness continued when 'lockdown' gave us time to



clear our garage. Keeping social distance we advertised many items on our front lawn for charity. £75 was raised and will be given to Missing Pets Perth and Kinross.

But life goes on, and as a Health Visitor in Fife, I am a key worker for children and families. Like so many others, just prior to lockdown, the way we worked changed overnight. We had to move out of our original base as it was converted to one of the main covid-19 hubs. We also had to return to uniform and work became just a little more anxious, having to visit many different homes and wear PPE. I know we will all get through this and look back and learn from the challenges lockdown presented...and who knows what the new 'normal' will bring, but let's all embrace it fully.

Keep safe

Margaret Caldwell



## MY RADIO APPEARANCE

When the school closed I had to do my school work at home. Pam lives just along the road from us and she lives by herself and she is over 70 and the prime minister told her she wasn't allowed to go out. I was worried that she might get lonely. I decided that instead of reading my book to my mum for school work I would telephone Pam and read her a chapter of a book instead. That would mean she would get a call every school day about something that had nothing to do with what was going on.

The Hodgeheg which is about a hedgehog called Max has been our favourite one so far. Pam is very kind when I don't get the words right!

My brother Finlay and I sit at the kitchen table to do our school work. That's when we discovered Finlay whistles all the time he works. It was really annoying!!! My mum put the radio on quietly in the background to stop him.

We listened to Scala Radio and I was amazed that people could phone a man called Simon Mayo on the radio and ask him to play a piece of music for them and I wanted to give it a go. He phoned me back to talk to me live on the radio! He asked me what I had been up to that morning and I told him all about my school work and playing outside and that I had just got off the phone to Pam. I had to explain to him who Pam was. He was so happy at hearing about what I was doing he made me Captain Scala for the day! All that being Captain Scala really meant at home was that I didn't have to tidy up after dinner. I tried to get out of lots of other things all day but my mum and dad and Finlay wouldn't let me.

Lots of people from all over the country said lots of really nice things about me that made me feel happy and feel like I was doing a good thing.

I am very lucky because I have lots of books and Pam has been very kind to me listening to the stories I choose for her. I like to read. I like it so much I read when I am supposed to be asleep.

By Max Rutherford age 8 (I was 7 when school closed but I had a very special birthday in lockdown!!)





## Thank Heavens for the Village Phone Box!

Before lockdown, when local libraries were still open, I had only visited the Glenfarg phone box a few times, to drop off and borrow the occasional book. Since lockdown, it's been a great resource, not just for books but also DVDs. Using the phone box, of course, means being sensible about washing hands before and after visiting, and leaving the borrowed items on a shelf at home for a few days before using them.

One of my best discoveries from our phone box during lockdown is a Scottish author of detective novels whom I hadn't heard of before, Denzil Meyrick. Not a terribly Scottish-sounding name but he was born in Glasgow and grew up in Campbeltown. Thanks to whoever in the village (or nearby) provided some of this chap's books.

I've now read his first novel, and a few short stories as well, all about DCI Daley and his sidekick, DS Brian Scott. The setting is mainly in and around the town of Kinloch, with some short stories also featuring Glasgow as the place where these two worked at the start of their career. I'm quite fussy about what detective stories I read; I've never really been a fan of the language of Val McDermid for some reason, but I absolutely love Ian Rankin's Rebus novels and I tend to measure all other books of this genre against them.

If you haven't read any of Denzil Meyrick's works, and you like detective stories, and/or novels set in Scottish locations, I recommend you give them a try. The first book I read was 'Whisky from Small Glasses' published in 2015. I could really picture the scenes and characters in my head as the story went along, as there's so much descriptive detail given, and I thoroughly enjoyed the pace, language and humour of the story-telling, which includes a fair bit of the local dialect. I think this novel would work really well as a TV series. 'One Last Dram before Midnight' was also very enjoyable, a collection of short stories featuring the same two main characters including 'Two One Three' featuring Jim Daley as a newly qualified Police Constable back in 1986. For anyone who was around in the Eighties, there are some great wee touches that take you right back, from the music to the shops, and from films on video tapes to the cars.

Hobby-related books are always worth a look and two in particular were most enjoyable for different reasons. Monty Don's book (the BBC garden presenter) featuring his beloved friend



and companion, a Golden Retriever, entitled 'Nigel: my family and other dogs' was a delightful read. It featured not only Nigel and other beloved pets but also told you the story of how Monty came to live at Longmeadow and how the garden there evolved. The book is all the more poignant, given that only this week, 11-year old Nigel has sadly passed away.

Another topical read for others like me who have the gardening bug, and even those who don't but love looking at gardens, was 'Chelsea, the Greatest Flower Show on Earth' published by the Royal Horticultural Society. Like most Dorling Kindersley books I've come across, it is packed with facts and figures, interesting details, and a wealth of beautiful images. I'll definitely be continuing to read my way through with the approach of a new 'virtual' version of Chelsea this year, with well-known garden designers broadcasting from their own gardens. Even the presenters, like Nicki Chapman, will be filming from home.

Having recently purchased a robot lawnmower, it was fascinating to learn that they were exhibited at Chelsea in 1959 in the 'Garden of Tomorrow' and in 1994 they also featured on the Husqvarna stand (who also make sewing machines and motorbikes amongst other things). On neither occasion did the makers receive many orders. It seems to me that it's only in recent times that robot mowers, hoovers, hospital cleaners etc have really started to appear.

The one DVD from the phone box that I really enjoyed was 'Shirley Valentine' starring Pauline Collins and Tom Conti. It's set in an era that now seems miles away from where we are now and so many touches in the scenes and the dialogue brought back memories of the days before mobile phones etc. I also discovered as I was watching the film that I actually hadn't remembered that much of the story from when the film was released in 1989 so the way that the tale unfolded was a lovely surprise. A really good, gentle watch with a lovely touch of realism.

In my little pile of books waiting on the shelf is one more from the phone box by Ian Rankin, a Rebus novel that I'm pretty sure I've not read before 'The Hanging Garden' so I'll enjoy that one next. Although I don't think it's one that was made into a TV series, I can still hear Ken Stott and Claire Price in my head as the voices of DI John Rebus and DS Siobhan Clarke, they were both great castings for these two characters.

If you've not been to the phone box yet, either to drop off some books and DVDs or to borrow some, I recommend a visit next time you're passing. Just observe the hygiene instructions I mentioned earlier. There still appear to be a large number of biographies about various sportsmen on the shelves, so if that takes your fancy, or even if you've just exhausted your own collection at home, get yourself along there. You might just find some wee gems as I did.

The Lady who Irons Outside

PS Thanks to whoever donated the book 'Stop Bingeing' which I've now read from cover to cover and found it to be a refreshing change to normal 'diet' books – I've not lost any weight yet but at least I've not put any on!

## Greenhill Madness Activity Camp

This camp seemed surreal at the time and even more so now in the heat and solitude. 15<sup>th</sup> February, the weekend before the camp, found several explorer scout leaders frantically digging trenches to prevent the camp site vanishing under water as six inches of snow melted in the pouring rain and burns appeared where they'd never run before.



After watching the weather forecast all week the leader team postponed the start of the camp until Saturday morning, the 23<sup>rd</sup> instead of Friday night. The leaders were back up on the site on the Friday trying to establish a cleanish covered area to serve food to the explorers as sitting round a campfire the way we usually

did to eat just wasn't going to work in the predicted horizontal snow.

The guys used forks to lift the worst of the muck from the sheep shed and a digger took it away before we swept the cobbled floor. Someone had leant us heavy duty matting and we used this to cover the cobbles before setting up tables and benches as a feeding area.

It was dry when we arrived on Saturday morning but we could see the clouds coming in and leaders frantically tried to create some sheltered spaces at the different bases. By lunch time of home-made soup and sandwiches for 60, the ventilation in the sheep shed walls was obvious as the snow came through the slats. The explorer scouts were thoroughly enjoying the camp, meeting up with old friends and making new ones. They left plenty of space at the tables for the leaders on the side closest to the wind. After a couple of gusts through the shed some leaders had had enough and went for tarps to attach to the outside which instantly increased the inside temperature.



The explorers continued with their activities throughout the afternoon, back woods cooking on open fires in the snow, clay pigeon shooting (thanks Steve for going home to bring another clay pigeon launcher), off road driving, zip-wire, crate climbing and gyro.

The evening meal of chicken curry and noodles was served in the sheep shed before the evening activities of quiz and campfire without the fire. The explorers were in their beds by 9pm with three inches of snow on the ground.

Alyth and Muthill explorers walked to the craik den beside the original camp site, a solid structure with a six foot circular hole in the roof for the central fire and a sleeping platform all round under the roof. Riverside explorers slept in the sheep shed with bales of straw to reduce the draft and tables against the wall. Our explorers decided that the warmest place would actually be in a tent. Ailsa and Katie invited a mutual friend from Alyth to join them and Robert ensured that the tent was pitched to his standard, back to the wind and storm guyed. The other explorers thought the girls were mad and sleeping beside the fire would be warmer – at 3am they knew the girls had been right.

*continued overleaf*





The leaders delivered burgers to the explorers and each sleeping area had radios for overnight communication should it be necessary.

The camp assembled for breakfast at 8am in the sheep shed. The activity bases, except back woods cooking as all ingredients to make pizzas, jam tarts, orange sponges and baked bananas had been eaten on Saturday, ran all morning in the sun.

Lunch was again served in the sheep shed before the explorers found a good slope for tobogganing and sledging on a canoe. The explorers soon found that more than two on the canoe and it needed pulled down the hill.

Parents arrived in the sunshine to collect their offspring who were all arranging to return for GMAC 2021. The leaders set off home exhausted and relieved that they had pulled off the camp in such surreal conditions.



**A Glenfarg based dog exercise service offering dog walking and for more energetic dogs, jogging and biking sessions**

call Yvonne on 07585 060 663 or email [info@tailsandtrailsglenfarg.com](mailto:info@tailsandtrailsglenfarg.com)  
visit us at [www.tailsandtrailsglenfarg.com](http://www.tailsandtrailsglenfarg.com) or find us on Facebook & Instagram

201912 Glenfarg Newsletter September 2019 (72pp)(c)

## **POOCH PERFECT DOG GROOMING SALON**

**Professional dog grooming service  
with over 6 year's experience**

**The Gables, Main Street  
Glenfarg PH2 9NT**

**01577 830741  
[poochperfect741@gmail.com](mailto:poochperfect741@gmail.com)**



# ANDREW MILLER FIREPLACES



*Bespoke & personal service*

**SUPPLY or SUPPLY & INSTALL**

**GAS / ELECTRIC / MULTIFUEL / WOODBURNING STOVES**

**GLASS / GRANITE / SLATE / TILED HEARTHS TO SUIT  
STOVES or FIRE SURROUNDS  
GAS / ELECTRIC / FIRES / SUITES**

**LARGE SELECTION OF VARIOUS TIMBER and PAINT FINISH  
FIRE SURROUNDS / BEAMS and SHELVES**

**SHOWROOM by APPOINTMENT  
27-29 WESTERLOAN  
MILNATHORT  
KY13 9YH**

*and now at*

**THE CONSERVATORY JAMESFIELD FARMSHOP & KITCHEN  
ABERNETHY**

*Any queries do not hesitate to contact*

**Email: [millerfireplaces@btconnect.com](mailto:millerfireplaces@btconnect.com)**

**Tel 01577 862173**

**Mobile 07870 284868**



## VETERINARY SURGEONS

### CAMERON & GREIG MRCVS

'Ardmhor', Stirling Road, Milnathort KY13 9XR



*By appointment only*

Monday - Friday	9 - 10.00am 2 - 3.00pm 6 - 7.00pm
Saturday	9 - 10.00am





Telephone: Kinross 863 494  
Website: [www.cameronandgreigvets.co.uk](http://www.cameronandgreigvets.co.uk)



*Large and small animals  
24-hr emergency service*

## Silver Lining Hair Studio

*Ladies, Gentlemen, Children, Students, Seniors*

*Bridal Hair a Speciality*

*Kebelo ADVANCE Specialist*

**Upstairs at Jamesfield Centre, (Lift available)**

**Perth Road, Abernethy, KY14 6EW**

**Telephone: 01738 851110**

**(Walk In Customers Welcome)**

**Send a message via Via Facebook or Instagram – typically replies  
within an hour**

**[www.silverlininghairstudio.uk](http://www.silverlininghairstudio.uk)**



# QWERTY IT SERVICES

Your Local

COMPUTER EXPERTS



## ABOUT US

We are a local IT support company based in Oakbank, Perth. We have been providing computer support services to home users and small businesses for over 15 years.

We pride ourselves on offering the best service to all of our customers at an affordable price and we always go the extra mile to make sure all of our clients return to us time and time again.

David Silvester, owner

## Get in touch

8 Mountview Road, Perth, PH1 1LD  
info@qwertyitservices.co.uk  
www.qwertyitservices.co.uk



## OUR SERVICES

- ✓ Windows 10 Upgrades
- ✓ Virus Removal
- ✓ PC and Laptop servicing
- ✓ New Computer Setup
- ✓ Troubleshooting
- ✓ Upgrades and Advice
- ✓ Security Checkups

01738 479 564

# GLENFARG COMMUNITY COUNCIL

## GLENFARG COMMUNITY COUNCIL - MINUTES OF MEETING Monday 2<sup>nd</sup> March 2020 Glenfarg Village Community Hall

**PRESENT:** CCllr Ponton (Chair), CCllr Fraser, CCllr Horsman, CCllr Warder, CCllr Pilmer,  
Minutes G Christie.

**Also present:** PKC Cllrs Watters, PKC Cllr Purves and one member of the public

**APOLOGIES:** PKC Cllr Robertson, CCllr Duncan

### 1. MINUTES OF THE LAST MEETING:

Minutes of the previous meeting were agreed.

### 2. ACTION POINT UPDATES:

#### (i) Community Police Visit

CCllr Pilmer confirmed that Community Policeman Matthew Ross shall attend the coffee morning on 12<sup>th</sup> March to discuss all community matters. It was stressed that although a number of meetings had been arranged recently at the coffee mornings, this was not to be taken as the norm as it was acknowledged these are not convenient for those in the village that have work commitments

#### (ii) Road Sweeping and Drainage

CCllr Warder will send a note out advising cleaning dates so that cars can be moved to allow the sweeping to take place.

#### (iii) Lomond Flats

PKC Cllr Fraser accepted an invite for a tour of the new flats. He was advised that the underground car park is above the water table level and there are two sump pumps in place for drainage. The flats are of a good standard and some interest has been shown. The showhouse is almost complete on the top floor. There is good sound proofing in the build, with one parking space per flat and one visitor space. There is to be an open day on Friday 13<sup>th</sup> March.

#### (iv) Festive Lighting

An Email has been received from PKC allowing permission for the extension of the festive lighting to the south side of the village. The cost of installing the extra sockets is around £100 per light (£800 in total). CCllr Horsman expressed concern at the costs of installing the lights over the past Christmas period. PKC Cllr Purves advised it may be worth querying the invoice received for this past year and may be worth applying for funding for Christmas lighting.

In the last survey, Christmas lighting proved to be popular for spend. It was decided that the go-ahead would be given for CCllr Fraser to obtain an updated quote and proceed with the purchase as it was felt this would complete the Christmas lights in the village.

#### (v) Greenbank Crescent

PKC Cllr Robertson has sent a survey out to the immediate area and a good response had been received from the residents. This will be reviewed in the next month following a review of the completed surveys.

#### (vi) Transport Forum

CCllr Fraser advised a meeting was to be set up with PKC Cllr Barnacle. No date has

# IJC Bookkeeping and Payroll



Don't let your paperwork get on top of you!

I offer a full range of Bookkeeping, Payroll and Self-Assessment services for Individuals and Small Businesses.

A friendly, reliable service at very reasonable rates.

- Self-Assessment Tax Returns
- VAT Returns (MTD Compliant!)
- PAYE and Payroll
- CIS Returns
- Sales and Invoice Recording
- Bank Reconciliations
- Management Reports
- General Office Administration



Isla Craig BSC (Hons), MICB PM. Dip

Email: [islacraig70@gmail.com](mailto:islacraig70@gmail.com)

Tel 01577 830125 / 07788 604202

@ijcbookkeeping

Practice Licence No: 20709

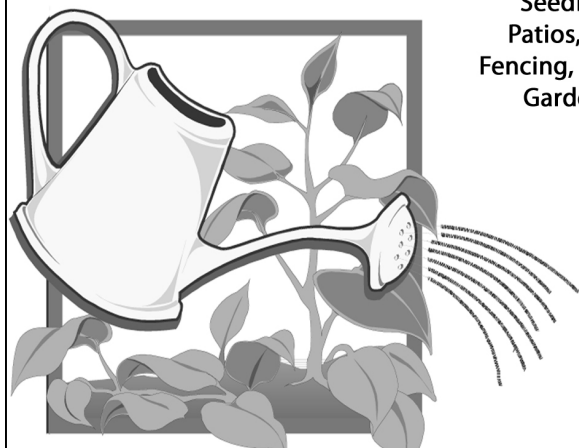
## Brian Todd Landscapes

1 Ash Grove, Glenfarg

Contact: 01577 830 728

or 07718 916 318

Seeding, Wall Pointing, Repairs,  
Patios, Driveways, Hedge Cutting,  
Fencing, Gutters cleaned and repaired,  
Garden Maintenance, Slabbing  
& all other odd jobs



**FREE  
ESTIMATES  
COMPETITIVE  
RATES**

been forthcoming. PKC Cllr Purves advised that he shall take an action to take this forward. There are options of private funding to be explored. With the lack of action from PKC lately CCllr Fraser felt looking into other options should be explored in tandem with the PKC options. Time is limited on this as the timetable could change to the detriment of Glenfarg.

(viii) Grapevine

This site has now re-opened with new administrators in place.

### 3. PLANNING REPORT

Nothing to report

### 4. POLICE REPORT

No police officer was present. CCllr Pilmer read out the following: No serious crimes to report.

It was raised to watch security on garden sheds and outbuildings. Anything suspicious call 101

### 5. TREASURER'S REPORT

CCllr Horsman had supplied a Treasurer's Report as follows:

#### TREASURER REPORT 2<sup>nd</sup> March 2020

##### 1. GCC – BALANCE ON ACCOUNT £464

Income	–	Nil
Expenditures – Village Hall Fees £12		

##### 2. GCC NEWSLETTER ACCOUNT – BALANCE £13 988

This balance is made up as follows:

	Newsletter	Microgrant	Nursing Fund
		£	£
At 6 <sup>th</sup> Jan 2020	8 036	1 595	4 011
Income	560	Nil	Nil
Expenditures/payments	214	Nil	Nil
	<u>8 382</u>	<u>1 595</u>	<u>4 011</u>

Income/Expenditures since last meeting:

#### Newsletter:

Income – Newsletter donations and advert renewals £560 Expenditures – Danscott Printing £214

#### Microgrant:

Income – Nil Expenditures – Nil





## GILLIAN FORBES STONECARVER

BESPOKE  
HANDCARVED MEMORIALS  
AND LETTERCUTTING

[www.forbesstonecarver.com](http://www.forbesstonecarver.com)  
email: [gilliancforbes@hotmail.com](mailto:gilliancforbes@hotmail.com)

01577 830754

### AUSTIN HEATING & ELECTRICAL

Boiler Servicing and Repairs - OIL, GAS, LPG & ELECTRIC

Aga / Rayburn Servicing & Repairs (Rayburn Guild Engineer)



Registered  
Business



Call - 07786 705261 or 01577 861188  
No Call-Out Charge

[www.austinheat.co.uk](http://www.austinheat.co.uk)

#### 1. SCHOOL FUND £141

No Change

**TOTAL FUNDS HELD £14 593 at 2<sup>nd</sup> March 2020**

#### 6. AOCB

Crash Barriers

Given recent events and the amount of accidents in the Glen, although we are aware that there is no funding available in the current PKC budget, it was felt this matter should be brought to the Council's attention again.

In recent events it was noticed a lot of water crossed the road and then froze. This was common on most of the local roads. Apart from crash barriers, which are on PKC radar, it was felt there were other alternatives that could be explored. These include road surface, crash barriers, field drains, double white lines and a reduction in speed limit which does not have to be expensive. PKC Cllr Purves will take this back to the next Council meeting.

Binn Group

A presentation was given to the four local community councils on what Binn Group are proposing. By 2025 there should be no waste going into landfill, and Binn Group are proposing to build an incinerator which shall convert waste into energy. Although the stack shall be around 70m high, as it will be built in a dip, this should not be visible. Experts have looked at the particulate fall and there is no danger to the local population. Similar projects abroad are very successful and this shall be the largest energy to waste schemes in the UK. Plans are currently with PKC. Experts see this as a good model. One area of concern was traffic; however, it is envisaged that this shall not increase. A comment was made on speeding however, Mike Harkins (MD) advised that each vehicle is fitted with trackers so if an incident is reported it will be acted on. Majority of traffic appears to go through Gateside.

Binn Turbines Greencap Project

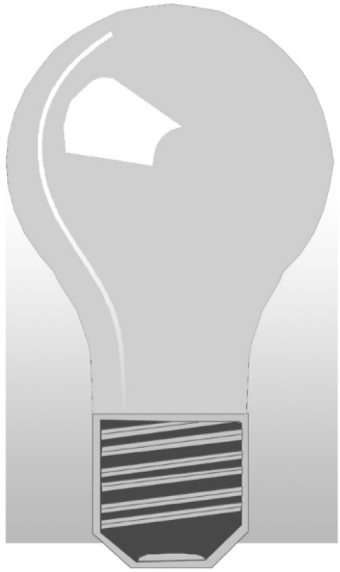
Presentation made to four local communities. CCllr Ponton advised that all feedback had not been compiled in one place yet. Deadline of 30/3 to sign off. Emails going back and forth to progress. CCllr Ponton will keep us advised

Glenfarg Village Community Centre

Still finalising quotations for works as it's been difficult to get quotes. As it is all one project, if upgrading the house, the hall has to be brought up to current building regs also. All kitchen equipment is purchased and ready to install. It is hoped parts will be open for fete week. There is a Hall Committee meeting next week. Plans are being looked at for staffing.

Reflex Blue (Marketing Company for Lomond Flats)

CCllr Fraser advised that as part of community relationships, Reflex Blue are offering a free upgrade to our current website. CCllr Fraser has already met with Bill McPherson and others who currently administer the website for their input. Some concerns were expressed that a few of the groups on the Website don't keep things up to date. CCllr Fraser advised training would be provided to all groups and he has agreed to move this forward.



# *John Allison*

## *(electrician)*

*'Ardblair', East Blair,  
Glenfarg, Perth PH2 9QL*

*Tel: 01577 830 678*

*Mobile: 07717 791 484*

*Email: johnwallison@btinternet.com*

## *All types of electrical work undertaken*

### *Also:*

Oil and gas central heating faults ~ Telephones  
Computer network cabling ~ TV aerials and  
distribution ~ Satellite re-alignment, alterations and  
distribution ~ Wall mounted TVs installed

***FREE ESTIMATES/ADVICE***

### Footpath from Ladeside to Ash Grove

Concerns were raised that this footpath is falling into disrepair. PKC will look into ownership and responsibilities.

### Damage to grounds at Wallace Park Gate

Damage has been noted at the gate to the park. These grounds shall be reinstated on completion of the park works.

### VE Day (May 9<sup>th</sup> – 75 years)

It was asked if the village was planning anything to celebrate 75 years since VE day. SSAFA – the armed forces charity, are holding a concert and display of military vehicles on Saturday 10<sup>th</sup> May. It was agreed to publicise this on the webpage. It was also agreed that the GCC Secretary would approach the school to see if they are interested in doing a display in the hall which the GCC would support.

### Flooding Issues

CCllr Fraser has been speaking with SEPA / Scottish Flood Forum. Working with them there is an opportunity for the village. They identify most *at risk* households, put trackers in place and the community alerted so that flood prevention measures can be put in place. CCllr Warder will circulate details.

### Litter

The litter in the Glen is causing concern, particularly "Police Aware" tape being left following removal of crashed vehicles.

### Road Condition around Lomond Flats Site

It was agreed that the Construction Officer would be approached with a view to agreement that all roads would be reinstated on completion of all works. Particular concern was raised in respect of a tracked vehicle currently being used.

### Potholes

Concern was raised regarding potholes around the village, particularly in Main Street. It was recognised that this is a UK wide problem. PKC Councillors advised that there is a backlog and that they are trying to get roads back to a decent standard.

### Police Speed Gun

Many areas are looking at usage of this equipment. Training and equipment have to be funded. PKC looking at various areas that can provide funding. Will be discussed at next Kinross Community Project meeting.

Close of Meeting: 8.42pm.

**The next meeting of the Glenfarg Community Council will be held on Monday 4<sup>th</sup> May 2020**



# ALPHAVET VETERINARY CENTRE

39 High Street, Kinross, KY13 8AA

For a caring professional service for all domestic pets



**TELEPHONE 01577 863 328**

E-MAIL: [alphavet@alphavet.co.uk](mailto:alphavet@alphavet.co.uk)

WEBSITE: [www.alphavet.co.uk](http://www.alphavet.co.uk)

Scotland's 1st Veterinary Practice Website!

Consultations by appointment

Monday to Friday 9.00am to 12.00 noon  
and 4.00pm to 6.00pm

Saturday 9.00am to 12.00 noon

Reception is open: Monday to Friday 8.30am to 6.30pm  
and Saturday 9.00am to 12.00 noon

**For our 24-hour Emergency Service  
please telephone 01577 863 328**



## Home Cleaning Service



We are two mums that offer a reliable, local and efficient cleaning service.

Whether it be a weekly clean, two weekly, monthly, one off or end of tenancy clean we cater to all.

We are both experienced cleaners and provide a wide range of bespoke cleaning services to suit all our clients needs.

Please don't hesitate to give us a call for a FREE quotation.

Glenfarg and surrounding areas



Telephone: 07745 869698 or 07495 294146

## Glenfarg Community Council Monday 4th May 2020 Agenda and Business meeting via email

### Welcome

GCC Chair CCllr Ponton thanked her team for their attendance through email and expressed her gratitude to the owners of the Village shop, to all villagers and many others for their valued help at this troubled time in our community.

**Attendance through email:** CCllr Ponton, CCllr Pilmer, CCllr Fraser, CCllr Horsman, CCllr Duncan, CCllr Warder, G.Christie Minutes Secretary

**1. Apologies** - none to report due to Covid public gathering restrictions

**2. Approval of last business meeting Minutes.** Proposer CCllr Pilmer and Seconder CCllr Fraser

### 3. Action Points update:

Crash barriers feedback carried forward to next Business meeting. *Action PKC Cllr Purves*

Greenbank Crescent feedback carried forward to next Business meeting. *Action PKC Cllr Robertson*

Footpath from Ladeside to Ash Grove feedback carried forward to next Business meeting. *Action PKC Cllrs*

### Festive Lighting

Following the Council decision in January 2020, eight new light column mounted Christmas festive lights have been ordered from Lite Ltd at a cost of £1,910.88 excluding VAT. This covers the lights, fixing brackets and delivery.

CCllr Fraser asked the supplier to hold back delivery for the time being as the Council depot is currently closed. It maybe that we will have to get these delivered to Glenfarg as a temporary holding station and that the Council will collect them from us.

In addition, to the cost of the light fittings, there will be a charge of £800.00 for the Council to install commando sockets on each column. Update to follow at next Business meeting. *Action CCllr Fraser*

### Glenfarg Website

A quick recap. The developers of the new apartments in the village offered the services of

# YOUR LOCAL PLUMBER

**NO CALL OUT CHARGE - NO JOB TOO SMALL  
DISCOUNT FOR SENIOR CITIZENS**

- Boilers - New Installations, Repairs and Servicing (OIL, NG & LPG) & Landlords Safety Certificates
- Bathrooms - New Installations, Upgrades & Shower Repairs
- Central Heating - Radiator valves repaired & replaced, system descale & flush, new radiator installations, Under floor heating, Fitting of gas hobs & cookers
- Dripping Taps - Outside Taps - Plumbing in washing machines & dishwashers - Toilet Repairs - Drains etc



**DOUGLAS MILLER**  
**01577 861623**



# Stewart Funeral Directors

14 High Street, KINROSS KY13 8AN  
Tel. (01577) 864607



**Modern Hygienic Preparation Room**  
**Private Family Viewing Suite**  
**24 Hour Personal Service**  
**Specialist Ambulance Transfers**  
**Funeral Planning Consultations**  
**Memorial Sales by Regency Memorials**

**24 Hour Emergency Service Tel. (01577) 864607**

their marketing company, Reflex Blue Ltd, to provide a mobile friendly update to our Glenfarg.Org website.

Following two meetings with the web site designers and associated interested parties (J Watson and B McPherson) it was decided that moving to a completely new website was probably a step too far in one go given the wide ranging sources of information and functionality of the existing site. Therefore, it was agreed that Reflex Blue would update the existing website to provide a modern version. This would initially sit alongside the existing site to allow us to road test it prior to a change over.

Reflex agreed to bring their web designer to the next meeting to thrash out the detail however, the meeting had to be cancelled due to the Covid 19 restrictions. Reflex Blue subsequently agreed to design an initial draft proposal for presentation to the group when the Covid 19 restrictions are lifted and CCllr Fraser will prepare a future update. *Action CCllr Fraser*

## Community Transport

CCllr Fraser reported that in light of the revised time table for route 56 and the decision by Stagecoach to withdraw their support of the service it is arguably the 'beginning of the end' for our bus service. The Council are now supporting the service however, there is no doubt they are monitoring its use and should there be further budget cut backs our bus service could be vulnerable. CCllr Pilmer did carry out a survey through Survey Monkey and the results were passed on to PKC's Margaret Roy. Two main points that came out of the survey were the slight alteration of bus timings and support for an extended service at Cuthill Towers.

With this in mind CCllr Fraser has approached the Council to explore our options.

The Council appears to be enthusiastic about creating a pilot project along the lines of an initiative being run in the NW of Scotland where the local council are, financially, supporting a locally managed mini bus style service. CCllr Fraser is hoping the timing of our approach to the Council may be beneficial to maximising any opportunity.

Margaret Roy – Public Transport Team Leader at PKC was to arrange a meeting with interested parties invited (GCC, Community Transport Association Scotland, a PKAVS staff member, Community Engagement Officer and Ward Councillors) however, this has been postponed due to the current restrictions.

It should also be noted that coinciding with our GCC approach to PKC, our PKC Councillors





WASP NESTS -  
ELIMINATION  
GUARANTEED

**AVAILABLE 7 DAYS A WEEK**  
**LOCAL RELIABLE PROFESSIONAL**  
**SPEEDY SERVICE FOR EMERGENCIES**

All pests professionally dealt with

Free Surveys Fully Insured

Domestic Commercial Agricultural  
Contract work or One-off visits

wasps • bees • ants • rabbits • squirrels  
flies • fleas • moles • bedbugs • rats • mice  
moths • spiders • insect infestations • rabbit fencing  
bird proofing • pest birds • all other problem pests

Call us to sort out your pest problem

**01738 813751**

**07767 353535**

[www.andylawpestcontrol.co.uk](http://www.andylawpestcontrol.co.uk)

Bridge of Eam, Perth.



are also fronting an initiative through the Public Transport Forum to introduce a local community bus service based on smaller busses serving the Perthshire rural areas. This could involve three circular routes all intersecting each other one of which would pass through Glenfarg.

It is CCllr Fraser's belief that one of these initiatives will be required in the next few years as our scheduled bus service comes under more pressure through lack of use. An update is expected for the next GCC business meeting. *Action CCllr Fraser*

#### Binn Turbines Greencap Project

CCllr Ponton reported that she had received a letter from Greencap relating to a planning application in retrospect for the Turbines.

#### **4. Planning report**

CCllr Duncan reported:

#### Binn Farm Energy from Waste Facility

Binn Farm have resubmitted a Proposal of Application Notice (PAN) for the Energy from Waste facility. A public consultation event was due to be held on 30th April at the Beinn Inn, Glenfarg but was cancelled for obvious reasons. If P&KC Planning agree to it, a 'virtual' consultation event may be organised.

#### Erection of 5 Dwellinghouses and garages Plots 1-5 Duncricvie Farm

PKC Planning were contacted on behalf of the GCC to request that the same Environmental and Safety Conditions that were attached to the previous consent be upheld. CCllr Duncan also requested clarification regarding the position of Duncricvie on the LDP. PKC will send CCllr Duncan an OS plan of the development boundaries which he'll pass on in due course.

Please note that all matters of correspondence to date related to the original conditions of 05/02080/FUL that were placed on this development.

#### **5. Police Report**

CCllr Pilmer stated that there were no serious crimes within our community to report. The Community Police visit to the Village Hall Coffee hub had been well received and in the future the Community Police shall return. Police Scotland's Area Commander's Bulletins have now been added to the Grapevine FB on a weekly basis.

#### **6. Finance Report**

**J. Stewart & Son**  
Landscaping and Paving

Quality just can't get any better!

**LANDSCAPING & DRIVEWAYS**  
Monoblock • Stone Paving  
Slabbing • Decking  
Sandstone Walls • Re-rendered  
Drainage • Gravel • Cobbles  
Heritage • Cotswold Drives  
Patios & Paths • Parking Areas  
Land Engineering  
Tidying and Full Garden Service  
Tree Surgery

**Landscaping and Ground Works**

Ask about turfing

ALL WORK IS CARRIED OUT BY TRAINED CRAFTSMEN  
AND IS FULLY GUARANTEED

Call for a **FREE** no obligation estimate

**Tel: 01738 245465**  
**Mob: 07516 595192**

**Give your feet a Treat**



Private podiatry/chiropractic in  
the comfort of your own  
home.

**H.P.C. Registered**

**Lisa Allison BSc Tel 01577 830678**

Nil report, carried forward to next meeting.

## **7. AOCB**

### Covid 19 Resilience

CCllr Fraser reported that there were some concerns at the outset of this crisis on how the lockdown might affect our vulnerable residents. He stated further that he believes that we have managed to circumvent most of the concerns using the proactive support of our local village shop and their agreement to act as a hub for villagers requiring assistance.

It is as a result of their superb interaction that most of the concerns appear to have been answered and that there has been a tremendous uptake on any 'reach outs' for village volunteers to date.

In addition, to village assistance, there is support being provided by other charity groups which is very welcome.

However, it would appear that the more vulnerable persons in our community will be in isolation for some time to come (perhaps until a vaccine is available) as such it is imperative that we don't lose sight of their needs as sections of our community are returning to their near normal routines. CCllr Fraser has requested information from the Council and this is being looked at which will provide more detail of those affected. There are also regional and national volunteering services which he has joined to pick up on any local cries for assistance. *Action CCllr Fraser*

### Security at the Village shop

The Village Shop's owners were offered funding from the GCC as a show of appreciation to assist with payment for CCTV facilities for the security and theft prevention of valued food stocks. This was agreed by the CCllrs because the Village Shop owners have demonstrated valued assistance especially due to the Covid 19 outbreak. Rather unfortunately food stocks, that they had bought for the villagers, were removed by persons unknown in a deliberate act of theft from an adjoining outbuilding.

### Lochelbank April 2020 report

CCllr Pilmer stated that a meeting of the Lochelbank Wind Farm Panel (LWFP) had taken place at the beginning of April to discuss the pending funding applications. The attached Lochelbank Summary of Awards report was circulated to the GCC CCllrs. This report will be passed on to the Editor of the village Newsletter for inclusion in the next issue and a copy is to be placed into the GCC noticeboard. CCllr Pilmer thanked the two Glenfarg villagers,





## TYREFAIR LIMITED

Unit 11  
Bridgend Industrial Estate  
Kinross

There is now a specialist tyre and battery dealer in Kinross that opens every day of the week, and has tyres and batteries at prices to suit your budget. **TYREFAIR** is a family business, with staff that have many years of professional experience in the tyre trade, and you can find them at **Unit 11, Bridgend Industrial Estate, or telephone on KINROSS 865656**. **TYREFAIR** welcomes trade account and offers the following goods and services:

- New tyres for cars and vans
- Guaranteed re-treaded tyres
- 4x4 tyres for business and leisure
- High performance tyre specialists
- Wheel alignment
- Top brand quality batteries
- Puncture and Vulcanised repairs
- Number plates made while-you-wait

**TYREFAIR** has a comfortable lounge, where you can relax while the work is carried out and you can rest assured that we will treat your vehicle with the care and respect that you demand.

**WHY NOT CALL IN, OR TELEPHONE NOW FOR MORE INFORMATION?**

**KINROSS (01577) 865 656**



*Individually designed  
hand-made cakes  
for all occasions*

**07814 239142**

Email: [info@leighsmithcakes.co.uk](mailto:info@leighsmithcakes.co.uk)

View photos at  
[www.leighsmithcakes.co.uk](http://www.leighsmithcakes.co.uk)  
Facebook: Leigh Smith Cakes



## Woodlands Bed and Breakfast

Church Brae, Glenfarg

[www.woodlands-bandb.co.uk](http://www.woodlands-bandb.co.uk)

Off Church Brae at end of lane below church

Ample car parking.

Two double bedrooms with king size beds

Resident's lounge

To book phone Cedric or Heather Wilkins

**01577 830300**

Mrs Rutherford and Mrs Wilkins, for their LWFP attendance and support. *Action CCllr Pilmer*  
Winter gritting

The GCC has been contacted by PKC's Roads Dep't asking for feedback relating to the gritting in our area over the winter period of late 2019 to early 2020. CCllr Pilmer will reply with a request that certain areas within the village require to be gritted frequently and timeously. They are: bus stops, primary school access, school bus routes and pavements. *Action CCllr Pilmer*

### Co-option of G.Christie as a Community Councillor

It was agreed that we co-opt Mr Geoff Christie as a Community Councillor and this will be carried out in due time. There may well be a delay due to Covid 19 restrictions however, we shall process the matter with Mr Christie and PKC accordingly. *Action CCllr Pilmer*

Close of meeting Monday 4th May 9:00pm

Next proposed GCC Business Meeting is Monday 6th July 7:00pm. To be confirmed.

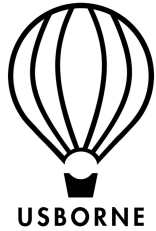
Programme and Round: Innogy Renewables UK Ltd Lochelbank Wind Farm Community Benefit Fund:2020.01.30

Grant Application Name	Number	Project Description - Summary	Amount Awarded
Glenfarg and Duncruevie in Bloom	A536993	To develop the North approach to Glenfarg.	Deferred
Forgandenny in Flower	A538439	To fund purchase of a water bowser	£1,290.00
Perth Chamber Music Society	A538530	To partially fund two community concerns in Lochelbank.	£804.00
Friends of Wallace Park (Fitness Station+Zip Wire)	A539481	To install a Fitness Station as part of a wider programme of park improvements, thereby improving the park's amenity, use by the community and associated health, wellbeing and social benefits.	£7,044.00
Arrgask Hall (Glenfarg Community Centre)	A543438	To fund the creation of a community centre to provide facilities and services to reduce social isolation	Withdrawn

Programme and Round: Innogy Renewables UK Ltd Lochelbank Wind Farm Community Benefit Fund:2019.09.11 (6 records)

Grant Application Name	Number	Project Description - Summary	Amount Awarded
Bridge of Earn Institute (Urgent Covid support)	A549701	To provide emergency support to assist a group operating a key community asset facing substantial loss of income due to the effects of the coronavirus pandemic, thereby assisting the group's financial resilience and ability to retain the asset for future community use.	£3,250.00
Arrgask Hall (Urgent Covid support)	A549707	To provide emergency support to assist a group operating a key community asset facing substantial loss of income due to the effects of the coronavirus pandemic, thereby assisting the group's financial resilience and ability to retain the asset for future community use.	£2,230.00
Forgandenny Village Hall (Urgent Covid support)	A549711	To provide emergency support to assist a group operating a key community asset facing substantial loss of income due to the effects of the coronavirus pandemic, thereby assisting the group's financial resilience and ability to retain the asset for future community use.	£860.00
Forteviot Village Hall (Urgent Covid support)	A549863	To provide emergency support to assist a group operating a key community asset facing substantial loss of income due to the effects of the coronavirus pandemic, thereby assisting the group's financial resilience and ability to retain the asset for future community use.	£660.00
Grand Totals			£16,138.00

**Joan Cotsford,  
Independent  
Usborne  
Organiser**



Quality children's books that  
everyone loves

For new baby or birthday gifts, fiction and  
non-fiction from birth to adult, homework  
help, jigsaws, sticker books and more!  
Free local delivery

Facebook: @bookhappyjoan  
bookhappyjoan@gmail.com



*For all aspects of*  
**PIANO TUNING**  
*and repair*  
**David R. Watt**  
**(01577 830 345)**

Genuine Hardwood logs by  
the trailer-load or part load.  
Logs cut, split and delivered  
to suit individual needs.

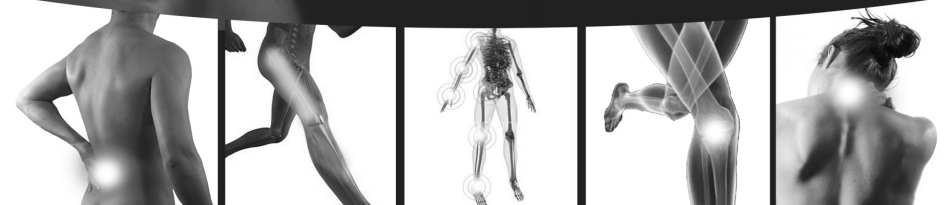


For further  
details ring  
Ewan  
Cheape  
Glenfarg  
830 349

## KINROSS Physiotherapy



- **SPRAINS/STRAINS/TEARS**
- **LOWBACK/NECK PAIN**
- **HIP/KNEE/ARM PAIN**
- **GOLFER/TENNIS ELBOW**
- **TENDON INJURIES**
- **ARTHRITIS**
- **TMJ (JAW PAIN)**
- **POST FRACTURE OR DISLOCATION**
- **REHABILITATION FOLLOWING SURGERY**



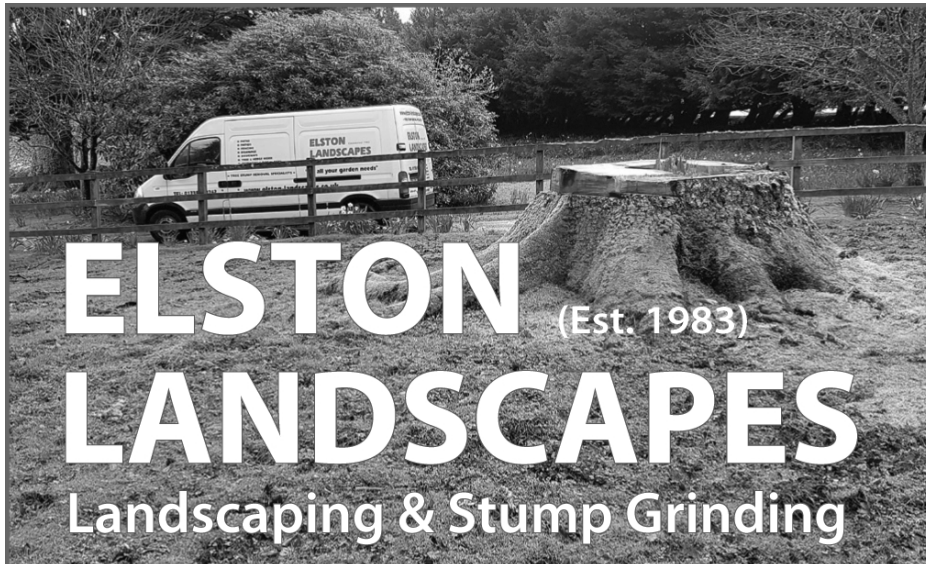
### OPENING TIMES

**MON - FRI**  
**10am - 9pm**

**37 New Road, Milnathort**  
**Kinross KY13 9XT**  
**01577 864875**  
**07912 100 845**

[enquiries@kinrossphysiotherapy.co.uk](mailto:enquiries@kinrossphysiotherapy.co.uk)





# ELSTON (Est. 1983) LANDSCAPES

## Landscaping & Stump Grinding

### TREE STUMP REMOVAL SPECIALISTS

Tree and shrub planting

Seeding & Turfing

Paths, Patios & Driveways

Hedge Cutting, Pruning and Tree Surgery

Fencing, Trellis & Pergolas

Garden Drainage

Operated Mini Digger, Dumper & Turf Lifter For Hire

# 01738 850 742

keith@elston-landscapes.co.uk

www.elston-landscapes.co.uk

Fully Qualified & Insured



## Index of Advertisers

Home Improvements and Repairs	Andrew Miller Fireplaces . . . . .	50
	Andy Law Pest Control . . . . .	64
	Austin Heating & Electrical. . . . .	56
	Binn Skips . . . . .	13
	Brian Todd Landscapes . . . . .	54
	Douglas Miller (plumber) . . . . .	62
	Elston Landscapes . . . . .	72
	Glenfarg Garage . . . . .	25
	John Allison (electrician) . . . . .	58
	J. Stewart & Sons (landscaping) . . . . .	66
	QwertyIT (computer repairs). . . . .	52
Health & Beauty	Avon . . . . .	15
	Ferrier & Mackinnon Optometrists . . . . .	15
	Kinross Physiotherapy . . . . .	71
	Lisa Allison (chiropractic) . . . . .	66
	Silver Lining Hair Studio . . . . .	51
	Bodyworks Clinic in Glenfarg . . . . .	56
Shops	Glenfarg Village Store . . . . .	28
General Services	Alphavet Veterinary Centre . . . . .	60
	Cameron & Greig Veterinary Surgeons . . . . .	51
	Cyprus Apartment Let. . . . .	11
	Earnside UK & Continental Travel . . . . .	33
	Gillian Forbes (Stone Carving). . . . .	56
	Home Cleaning Service. . . . .	60
	IJC Bookkeeping & Payroll. . . . .	54
	Leigh Smith Cakes . . . . .	68
	Letham Farm Glenfarg Logs . . . . .	70
	Piano Tuning & Repair . . . . .	70
	Pooch Perfect (dog grooming) . . . . .	49
	Sonias Ironing . . . . .	60
	Stewart Funeral Directors . . . . .	62
	Tails & Trails (dog walking) . . . . .	49
	Tyrefair Limited . . . . .	68
	Usborne (Books). . . . .	70
	Woodlands Bed & Breakfast . . . . .	68

# General Information

## Doctors' Surgeries

Loch Leven Health Centre, Muirs, Kinross - **01577 862 112**

Daytime emergency number - **01577 865 252** - NHS 24 Out of Hours - **111** The Surgery, Main Street, Bridge of Earn - **01738 812 000**

## Library

The van stops at Main Street on every other Tuesday from 12 to 1pm

## Mobile Post Office

Stops outside the Joiner's workshop, Ladeside

Wed 10.30am-11.30am

## Recycling Points

**Glenfarg:** Arngask School car park for cans, paper and glass, Arngask School playground for clothing and shoes.

Wallace Park car park for glass.

**Kinross:** Causeway Car Park, Sainsbury's, Station Road, for cans, glass, paper and textiles.

Bridgend Industrial Estate Open Mon-Fri 9am-7pm, Sat-Sun 9am-5pm

**Milnathort:** Thistle Inn, Black Loan for cans, glass and paper

<b>Kerbside Recycling Service: Waste Collection Dates</b>						
<b>Green lid</b> (Non-recyclable waste) <b>Blue lid</b> (Paper, cardboard, cans, plastic) <b>Brown lid</b> (Garden & food waste)						
<b>Glenfarg</b>	<b>June</b>	Green Lid	Fri	5	19	
		Blue Lid	Fri	12	26	
		Brown Lid	Thu	4	18	
	<b>July</b>	Green Lid	Fri	3	17	31
		Blue Lid	Fri	10	24	
		Brown Lid	Thu	2	16	30
	<b>August</b>	Green Lid	Fri	14	28	
		Blue Lid	Fri	7	21	
		Brown Lid	Thu	13	27	
<b>Duncricieve</b>	<b>June</b>	Green Lid	Thu	4	18	
		Blue Lid	Thu	11	25	
		Brown Lid	Mon	8	22	
	<b>July</b>	Green Lid	Thu	2	16	30
		Blue Lid	Thu	9	23	
		Brown Lid	Mon	6	20	
	<b>August</b>	Green Lid	Thu	13	27	
		Blue Lid	Thu	6	20	
		Brown Lid	Mon	3	17	31