

# **The Glenfarg Newsletter**

**Issue 223 April 2016**



## **Inside this issue**

**Core Paths - Glenfarg Folk Feast - Geocaching**

**Line Dancing - More Travels with the Bag**

**Suggested Donation £1**

# Contents

Contacts.....	3
Editorial.....	5
Diary of Events.....	7
Village Hall Calendar.....	8
Arngask Church News .....	10
Line Dancing.....	12
Walking Out of Site.....	14
Glenfarg Store Bag.....	18
Wedding Congratulations...	20
Glenfarg Folk Club .....	22
G & D In Bloom.....	25
Bridge Club.....	27
SWI.....	29
Sports Relief/Arts & Crafts.	31
Geocaching.....	32
Table Top Sale / Heather...	34
Arngask Primary School....	37
Glenfarg Folk Feast.....	38
Tennis Club.....	40
Beavers.....	42
Glenfarg Cinema.....	44
Scouts.....	46
GCC Chairman.....	49
Red Velvet Cake.....	50
Winnie Barlas.....	52
Glenfarg CC Minutes.....	55
Social Hub.....	64

The views expressed by contributors to this newsletter are entirely their own. Publication within this newsletter does not imply that the Editors or Community Council agrees with, or supports, those views. The editors will not be held responsible for any factual inaccuracies, or incorrect inferences drawn.

## Advertise In The Glenfarg Newsletter

You can advertise in the Newsletter for very reasonable rates as below which are annual i.e. 6 issues.

Full Page £70 per annum

Half Page £35

Quarter Page £20

Single issue advert prices available on request.

Advert enquiries should be made by initially contacting the editorial team.

### Editor

newsletter@glenfarg.org

Robin Watson 830 355

### Treasurer

Daniel Horsman 830 067

### Distribution

Glenfarg Village Store 830 201

### Cover Photograph

by the editor (where is it?)

### **DEADLINE FOR NEXT ISSUE**

We always try our best to make sure that your newsletter is available promptly at the start of every even month. If you would like to contribute to the next issue, please inform us with details by the 1st of May to allow us adequate time to plan the issue. Contributions should reach us by 15th of May. **Thank you.**



# Contacts

Service/Organisation	Contact Name/ Email Address	Telephone
<b>Community Council</b>	Chairperson: Donald Mackenzie	830 225
	Secretary: Lesley Warder secretary@glenfarg.org	830 692
<b>P&amp;K Councillor</b>	Cllrs. Barnacle, Cuthbert, Giacopazzi and Robertson	See P&KC website
<b>Police</b>	Non emergency contact number	101
	Crimestoppers	0800 555 111
<b>Household Utilities</b>	Scottish Water Helpline	0800 0778 778
	Scottish Hydro Electric Helpline	0800 300 999
<b>Dog Warden</b>	Kirsteen Mackenzie	01738 476476
<b>PA Contact</b>	Catherine Fairweather	830 340
<b>Arngask Church</b>	Bill Macpherson (Session Clerk) Session.Clerk@abernethydronarngaskchurch.org	830 430
<b>Arngask School</b>	Marie Connor (Head Teacher)	867 250
<b>Accordion &amp; Fiddle</b>	Russell Robertson	830 642
<b>Baby &amp; Toddlers</b>	Donna Smith	07535 595 430
<b>Badminton Club</b>	Alan Clark	830 246
<b>Dance Connect</b>	Rachel Webb	07760 972 359
<b>Beavers</b>	Jan Pedley glenfargbrownies@gmail.com	830 195
<b>Bowling Club</b>	Janet Ewart, Kinross janetewart@btinternet.com	863 929
<b>Bridge Club</b>	Sheila Harley	830 319
<b>Cubs</b>	Christine Morton	830 210
<b>Curling - Men's</b>	Arthur Jenkins	830 453

<b>Curling - Women's</b>	Margaret Jenkins	830 453
<b>Folk Club</b>	David Aird	830 370
<b>Football</b>	Alan Fairweather	830 851
<b>GDIB</b>	Kate Armstrong	830 343
<b>Glenfarg Oil Buying Syndicate</b>	Dave Arnold kadavar@waitrose.com	830 136
<b>Knit &amp; Natter</b>	Ineke Watt	830 345
<b>Kinross-shire Time Exchange</b>	Linda McKeen time-exchange@kinross.cc	07469 758 984 07510 380 603
<b>Ladies' Badminton</b>	Annette Eadie	830 547
<b>Matthew Dance Academy</b>	Nikki Mathew	07869 120 989
<b>Neighbourhood Watch</b>	Linsey Penman	830549
<b>Old Folks Association</b>	Christian Meldrum	830 437
<b>Rainbows, Brownies &amp; Guides</b>	Jan Pedley glenfargbrownies@gmail.com	830 195
<b>Red Cross</b>	British Red Cross, Perth	0844 412 2808
<b>Riding for the Disabled</b>	Angela Stocks	830 262
<b>Scouts</b>	Andrew Vaughan	830 128
<b>Soup &amp; Chat</b>	Lindsay Kinnaird	830 337
<b>SWI</b>	Margot Moran	850 211
<b>Tennis Club</b>	Tim Corcoran tim@taraw.plus.com	830 879
<b>Village Hall</b>	Tanya McKibbin	830 156
<b>Website</b>	Janet Watson <i>editor@glenfarg.org</i>	830 355
<b>Wine Club</b>	Steve Mee	830 395
<b>Yoga</b>	Caroline Waring	830 239

# Editorial

I am pleased to announce that the Newsletter now has two new staff reporters. Jim Ashton and Alison Harrison have volunteered to help with news-gathering and their input is greatly appreciated.

Among the many ramifications of the hotel's closure has been the re-siting of the venue for the Glenfarg Folk Club. Now ensconced in the Green Hotel, Kinross the annual Glenfarg Folk Feast on 8th to 10th April will feature Dougie MacLean headlining a strong supporting cast. See the centre pages for more details.

It has been brought to my notice that there has been very poor use of the travelling library which visits the village and stops at Main Street on alternate Tuesdays (see the back page for full details). I think this resource should be valued and given more support before the council decides to remove it. Libraries seem to be first on the hit list when it comes to making budget cuts.



Also in this issue are two articles on walking. The first examines the many resources available on the internet detailing the many core paths available for walking. The second tells of the delights of treasure hunting with geocaching.

Fancy doing some line dancing see page 12 for details.

The holidays are coming up. Why not think about writing an article about your travels which might be of interest to the Newsletter. All contributions gratefully accepted.

Thanks once more go to our regular contributors and special thanks to our two new staff reporters Alison and Jim.

Robin Watson



# Glenfarg Windows

**WINDOWS | DOORS | CONSERVATORIES**

**SUNROOMS | FACIAS | SOFFITS | GUTTERS**

**FULL RANGE WITH SUPPLY ONLY OR SUPPLY & FIT**



**GREAT PRICES, DISCOUNTS AVAILABLE!**

**CONTACT KEVIN WHYTE, 17 ELM ROW, GLENFARG**

**01577 830269 | 07802 821583**

**[kevin57whyte@mail.com](mailto:kevin57whyte@mail.com)**

# Diary Of Events

Date	Event	Where
1st April	Line Dancing	Village Hall 7pm
4th April	Ruth & Ken Powell	Backstage at The Green
7th April	Kirk Session	Arngask Church Hall
8th April	Folk Feast Starts	Backstage at The Green
8th April	Community Cinema Boyhood	Village Hall 7.30pm
10th April	Childrens Concert	Backstage at the Green 1.30pm - 2.30pm
17th April	Communion Services	Arngask Church
20th April	Arngask Primary School Garden Day	Arngask Primary School 11am
24th April	United Service	Arngask Church
25th April	Folk Club - Gerry Creen	Backstage at The Green
30th April - 1st May	Art Exhibition	Village Hall 10am
9th May	Community Council AGM	Village Hall
9th May	Folk Club The Mlle Roses	Backstage at The Green
11th May	Community Cinema	Village Hall 7.30pm
17th May	Kirk Session	Abernethy Kirk
23rd May	Folk Club The Tea Cups	Backstage at The Green
29th May	Kirk Session	Abernethy Kirk

# A Village Hall for All

A quick guide to regular village hall activities. Does anything take your interest?

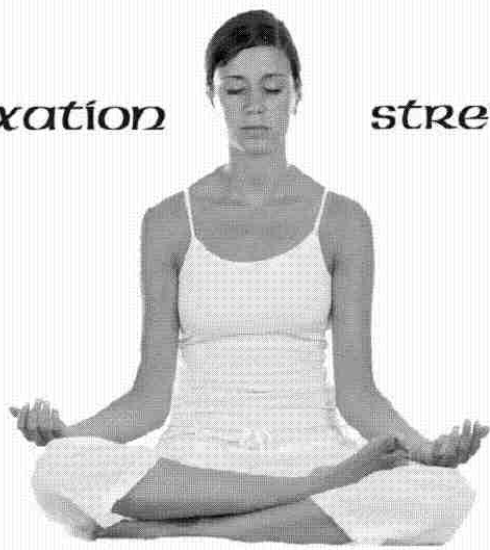
Day	Time	Organisation
Monday	6.00pm - 7.30pm	<b>Cubs</b>
	8.00pm - 10.00pm	<b>Ladies' Badminton</b>
Tuesday	5.15pm - 6.15pm	<b>Beavers</b>
	7.00pm - 8.00pm	<b>Yoga</b>
Wednesday	9.30am - 11.30am	<b>Baby &amp; Toddler Group</b>
	6.00pm - 7.00pm	<b>Rainbows</b>
	6.00pm - 7.30pm	<b>Brownies</b>
	6.00pm - 8.00pm	<b>Guides</b>
	8.00pm - 10.00pm (In winter)	<b>Badminton</b>
	12.30pm - 1.30pm 1st Wed of month	<b>Soup and Chat</b>
	7.00pm - 11.00pm	<b>Accordion &amp; Fiddle Club</b>
Thursday	7.30pm - 9.00pm	<b>Scouts</b>
2nd Thursday Sept to May	7.30pm	<b>WRI</b>
Friday	10.00am - 11.00am	<b>Chair Exercise</b>

To check on the Village Hall bookings, go to the village website  
[www.glenfarg.org](http://www.glenfarg.org)  
 and look at the on-line calendar under 'Hire the Hall'

*tune into your inner music*  
**yoga**

*relaxation*

*stretching*



*every tuesday  
in the  
glenfarg village hall*

**7pm - 8pm**

Chair Class every Friday 10-11am

**contact caroline 01577 830 239**



# Church News



Abernethy and Dron  
and Arngask Parish  
Church of Scotland

The Rev. Robert McCrum has now stepped down as our Locum Minister. Following a Parish-wide collection he was presented with a cheque for £330. Thank you to all members of the community who contributed. As a recently retired Minister, Rev. McCrum wasn't looking to extend his working life by a year (we expected just a few months would be necessary during Moira's illness). As it transpired he stayed with us throughout a difficult year for which we are very grateful.

Rev. Jim Wallace stepped into the breach until a new long-term Locum Minister could be appointed, and I am pleased to say that the Rev. Douglas Main has now agreed to be our new Locum Minister; all being well until a new Minister is called. We welcome Rev. Main and look forward to his Ministry.

The process to find a new Minister has now started. By now the Electoral Roll will have been completed and during April a committee will be appointed whose responsibility it will be to find a new Minister. We wish them good luck! As a process it could take anything from a few months to a couple of years. We all hope it will be closer to the former than the latter!

Following the closure of the Glenfarg Hotel we have found the Church Hall to be in demand as a meeting room. Please be assured we are very happy to see the community use it as such, as it increases our relevance to the community as a whole and brings in revenue. The current availability can be seen from the 'Bookings' tab on the church web site.

## **Congratulations**

Following from a successful year as National Vice-convenor of the Kirk Guild, Rosemary Johnston will take up her year long post as National Convener in May at the General Assembly. Rosemary, as you will no doubt know, is an Elder on our Kirk Session.



## Calendar

April	7	Kirk Session (Arngask)
April	17	Communion Services
April	24	United Service (Arngask)
		Sunday Club Starts
		Annual Stated Meeting
		Appointment of a Nominating Committee
May	17	Kirk Session (Abernethy)
May	21	General Assembly Opens
May	27	General Assembly Closes
May	29	United Service (Abernethy)

# Line Dancing For Beginners

Having lunch at the Bein Inn with my friend Margaret a few weeks ago we were mulling over the need for an activity for everyone, gentle exercise (the thought of boot camp terrifies us!) and fun for all ages. I mentioned that I always wanted to try line dancing but was always afraid to join in and would just sit at the bar and watch. Margaret wanted something to encompass all forms of dance. An idea was formed!

After putting some feelers out on Facebook, Jean King was mentioned.



Jean is relatively new to the village, having moved here from Galloway in July last year. Jean is a veteran instructor with over 20 years experience and had been looking to do something in the village. A marriage made in heaven.

After badminton finished for the season and working around the cinema schedule, Friday evenings were chosen. Initially we booked a block of 6 classes in order to gauge interest. Our first class was on Friday 26th February with 19 of us turning up. The second was 4<sup>th</sup> of March this time we had 25 eager dancers! Ages ranged from 10 to 70+.

Jean is a brilliant instructor and goes out of her way to ensure that everyone has fun. Not only did we line dance but also learned some Salsa and Charleston steps which everyone loved! We all had an absolute ball and all agree that we can't wait for the next one. Sadly I was the only man there but after growing up in a house with five women, they don't scare me!... much!!

Mark Crossey

# AVON CALLING!

37 years and still  
DING DONGing in Glenfarg!



*Many thanks to all my customers, past and present  
Cosmetics, toiletries, perfume, gifts  
delivered to your door*

I can deliver a brochure, or you can go to  
**www.janmakeup.co.uk**,  
place your order and choose whether to have it delivered direct  
(for a small fee) or for free by me.

If you would like me to call, or for more information, contact

Jan Macpherson, Lyndhurst, Ladeside  
01577 830430, 07709 015305  
jan@janmakeup.co.uk

## DOUBLE “M” DAIRY

01738 850622   **Main Street**   01337 840820  
**Abernethy**



**We are a locally based business, supplying milk and other  
dairy products. We still deliver milk in glass bottles if you want.**

**We deliver on a Monday, Wednesday & Friday in this area.**

**Please phone us for more information.**

**A. Morren & D. Smart  
Partners**

# Walking Out Of 'Site'

We're told that most of us have access to the internet these days which as well as allowing us to look at worldwide events can also be extremely useful for things near home as well (e.g. Glenfarg Grapevine!!)

As most of you will be aware our local paths group have published a leaflet describing four walks all starting from the village shop and well worth doing. These walks can also be found online at [www.glenfarg.org](http://www.glenfarg.org) under 'Community'.

However, once you've done them and want to wander a bit further afield then there are a number of online sites which you may find helpful.



Walking in Fife near Strathmiglo last year I noticed a sign on a post that said the route was a 'Core Path'. I had not heard of this before so on returning home I fired up the computer, asked my good friend 'Google' and was directed to a number of sites detailing core paths in every area of Scotland!



I learned that 'Core paths are the basic framework of key routes that provide for the main needs of users. Core paths are a new innovation under the Scottish access legislation. Each access authority (local authority and national park authority) has a duty to draw up a plan of core paths in their area, after consulting with local communities, land managers and path users. These core paths will be signposted and shown on Ordnance Survey Explorer maps, and are likely to be the most popular paths.'

Each local authority has consulted and in 2012, published on- line, core paths in their area and on [www.pkc.gov.uk/corepaths](http://www.pkc.gov.uk/corepaths) you can find core

paths in the Glenfarg and the surrounding area and also in the rest of Perthshire. Unfortunately there is no description of the walks on this site but you can plot the route from the maps shown.

Many of the Paths are now marked with these green sign-posts which give the destination and the distance.



A site that gives much more info about paths and the history of them is [www.heritagepaths.co.uk](http://www.heritagepaths.co.uk) The web site is easy to navigate and when you click on Paths and highlight Perthshire on the map, amongst the first half dozen walks featured are 'Path of Dron' and 'The Wallace Road' which could be combined into a day's circular walk starting from the village. 'The Path of Dron is a narrow and very old track across the Ochils. It was known as the Drove Road and sometimes as the Loudeners' Road owing to the fact that harvesters travelled to and from the Lothians along it'. The



Wallace Road has quite a number of historical associations, including being used by 'Robert Burns who travelled this road in 1787 on his way from Invermay to Edinburgh, returning from a three week tour of the Highlands whilst in the height of fame. Despite not being made up to take coaches, the Wallace Road was shorter than the maintained Wicks of Baiglie public road (which became the turnpike in 1753), so continued to be used by gentlemen on horse, harvest workers, smugglers and numerous other travellers'.

At [www.scotways.com](http://www.scotways.com) , in the download section, you will find a good number of walks in Lindores, Cupar and St Andrews area. All of the walks are well described with lots of information.

If you want to go further afield, then [www.walkhighlands.co.uk](http://www.walkhighlands.co.uk) is a great site where, despite the title, you can find walks in all parts of Scotland including Perthshire and Fife. This is a great site as it gives very detailed info on each walk including distance, time, transport, difficulty etc. You can download and print route maps and read reports from other people who have done the walks.

These are only a few of the many sites available online. Many local communities, like Glenfarg, have local websites with details of local walks.

If you have discovered any good walks locally or nearby that you would recommend, email us the details (along with any photographs you have) and we will try and include them in future editions.

With Spring officially declared hopefully the weather will improve and dry up the countryside following the wettest winter on record but in any case get the boots on, wrap up, log on to any of the above sites, choose your walk and off you go!

Jim Ashton

# Further Adventures of the Glenfarg Store Bag



I'm not sure if our Store bag can claim to be the most travelled but it must be a contender. It went with us to California, Hawaii and Nevada 2 years ago and it is just back from its latest journey.

Starting off in Singapore, our first priority was to walk the Formula 1 circuit and visit the famous Raffles Hotel. Next came Cambodia and the first pictures were taken at Angkor Wat and Ta Prohm (Tomb Raider!) two of the famous temples in the North of the country.

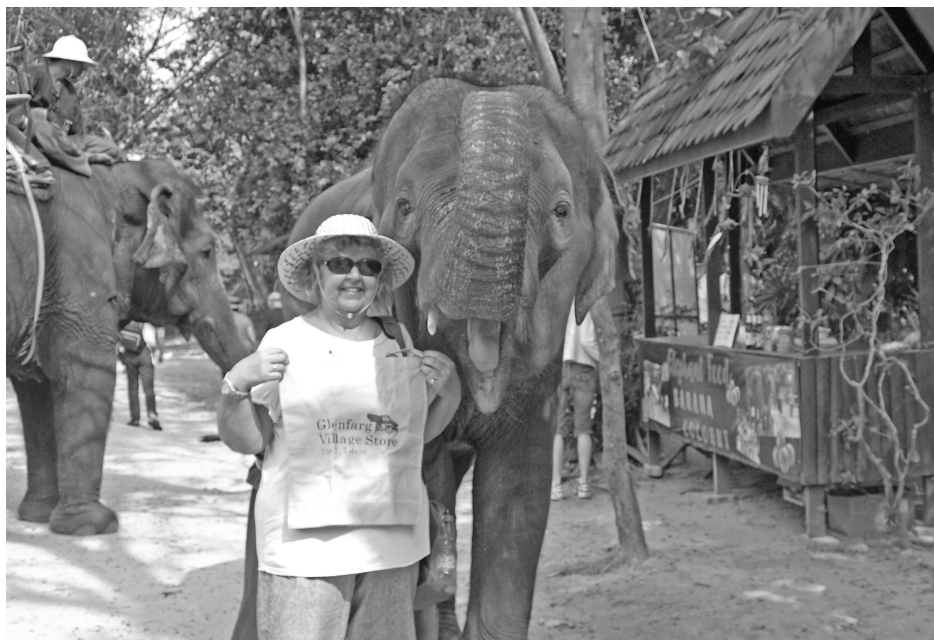
After a quick visit to the rich opulence of Bandar in Brunei we moved on to Vietnam and Philip went to visit the tunnels of Củ Chi which are an immense network of connecting underground tunnels located in the Củ Chi District of Ho



Chi Minh City, Vietnam, and are part of a much larger network of tunnels that underlie much of the country. The Củ Chi tunnels were the location of several military campaigns during the Vietnam War, and were the Viet Cong's base of operations.

Moving on from Vietnam our next port of call was Thailand and a visit to an elephant kraal was a must. These sanctuaries save elephants from areas of the country where jungle is being destroyed and bring them together to live a peaceful existence (other than the occasional bus load of tourists visiting!).

Our last day saw us once again in Singapore where we visited the amazing Marina Bay Hotel and gardens by the bay before returning home.





## *Congratulations*



Congratulations to Lauren Brookes (from Duncricvie), who will marry David Murphy (from Linlithgow) at Inglewood House on Friday 8th April 2016

Wishing them every happiness for their future together from both families.

David and Christine Brookes



Alex and Lou Robertson are delighted to announce that their daughter Suzanne married her long time partner Kevin Bree at sunset on Valentine's Day while on safari in Africa.



Henderson Plumbing and Heating,  
based in Glenfarg, provide a professional and  
reliable service.

- \*Full Bathroom Renovations
- \*Central Heating systems
- \*Biomass systems
- \*Drainage
- \*General maintenance
- \*Traditional Cast iron rain water gutters
- \*lead work

Mobile. 07703 735925  
*[hendersonplumbingandheating@outlook.com](mailto:hendersonplumbingandheating@outlook.com)*



# Glenfarg Folk Club



**Back Stage At The Green in Kinross.**

**RUTH AND KEN POWELL**

Monday 4th April Members £5, Non-Members £8



A warm welcome back to the Club for a couple who have previously played here as two of the members of "The Riskies", i.e. Risky Business. We are sure to remember Ruth's amazing soaring voice and, combined with Ken's guitar skills, we can once again experience their very distinct style of music.

**The 38th GLENFARG FOLK FEAST** 8th to 10th April.

For full details see page 6

**POST - FEAST RECOVERY SINGAROUND** Monday 11th April All £3

Come and wind down at our recovery session. This is usually a particularly fine singaround evening with some Folk Feast visitors still with us as well as regulars. There is no particular theme for tonight so any song welcome.

**OPEN MIC** Monday 18th April All £3

Always a good night at the Club when attendees are invited to get up on stage and perform their songs/tunes with full PA. In other words, a singaround but with the ability to gain some experience and stagecraft in front of a friendly and sympathetic audience.

**GERRY CREEN** Monday 25th April  
Members £5, Non-Members £8

A warm welcome back to the Club for Belfast's own singersongwriter who has already entertained us both at the Club and as a guest at our annual Folk Feast. Gerry is one of life's gents and his performances always generate a "feelgood" effect. You are guaranteed to leave the Club with a warm glow. Good man!



**SINGAROUND** Monday 2<sup>nd</sup> May. All £3 Having maybe partaken in the rigours of Lent, it is now time to give in to life's pleasures. Accordingly, the theme for tonight will be food and/or drink. All welcome.

**THE MILE ROSES.** Monday 9<sup>th</sup> May This could be one of the highlights of the year



when we have three wonderful individual artistes combining to perform for us as a trio. Kate Bramley, Edwina Hayes and Simon Haworth will provide us with amazing vocals and close harmonies accompanied by guitars, fiddle, mandolin, bass, cittern and mandola. A real coup for Glenfarg to bring them on to our stage.

**SINGAROUND** Monday 16<sup>th</sup> May. Now that the football and rugby seasons are finished, let's hear about your favourite summer pastimes! So summer activities is the theme for tonight. All welcome.

**THE TEA CUPS** Monday 23<sup>rd</sup> May. Tonight we are featuring a four-some acapella group who have been creating a storm across the UK festival circuit. They arrive having received critical acclaim on their tours and will bring a breath of fresh air to the backstage. Come early for this one.

**SINGAROUND** Monday 30<sup>th</sup> May. With holidays in mind, what better way to relax than to go cruising. So anything nautical is our theme tonight.







# **Senses** (Est 2008) **Health & Beauty Ltd.**

AWARD WINNING SALON

**Embrace care and pleasure, science and nature, essential richness and results. Senses holistic approach merges with the most advanced research to offer the ultimate sense of beauty and well-being.**

Senses offers a wide variety of treatments including waxing, manicures, pedicures, shellac, Rockstar nails, reflexology, Indian head massage, maternity treatments, organic treatments, facials, massage treatments, body treatments, tanning treatments, makeup, and much more.

Pamper Packages, Gifts and Gift Vouchers also available.

## **OPENING HOURS**

**TUESDAY - FRIDAY - SATURDAY : 9:30am - 5:30pm**

**WEDNESDAY - THURSDAY : 9:30am - 8:00pm**

**Senses Health & Beauty Ltd.  
Front Row, Aberargie, Perth PH2 9NB  
(Just outside Abernethy)**

**Tel: 01738 851023**  
**[www.senses-salon.co.uk](http://www.senses-salon.co.uk)**

# Glenfarg and Duncrievie in Bloom



GDIB's latest project, from an idea first mooted by the late Sheila Lownie, is now well underway. The restoration project, focused on the old railway wall at the south end of Glenfarg, got underway with volunteers from Scottish & Southern Energy's tree cutting team clearing all the mess around and behind the wall. Even as it stands the place looks a lot better. GDIB is hugely grateful to Bruce Smith, SSE's Field Manager Tree Cutting, for organising the whole thing.

But the next activity will be on 23/24 April when volunteers from the Scottish Dry Walling Association will be on site repairing and tidying the wall.

The final phase of that work will be the levelling and re-planting of the grass verge that runs south out of the village.

In addition to this project, a major planting of shrubs will be taking place in Glenfarg Green, the aim of which is to fill in some empty areas and provide more all-year-round colour in the Green.

# **ELSTON LANDSCAPES**

**EST. 1983**

**\*Tree & Shrub Planting - Complete Layouts**

**\*Patios, Paths, Driveways**

**\*All Types of Fencing & Gates**

**\*Pruning, Hedge Cutting & Tree Surgery**

**\*Terracing, Raised Beds & Sleeper Walls**

**\*Operated Plant Hire for Mini Digger,  
Dumper & Turf Lifter**

**\*Tree Stump Removal Specialist**

For more information visit

**[www.elston-landscapes.co.uk](http://www.elston-landscapes.co.uk)**

or

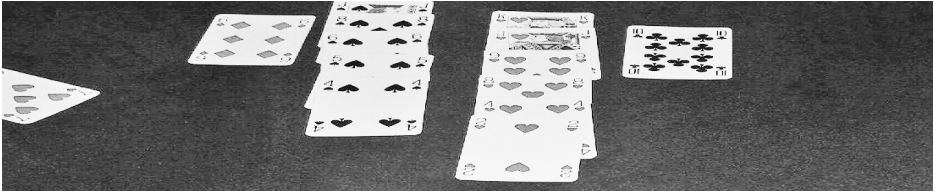
Contact Keith Elston on

**01738 850742**

Email **[keith@elston-landscapes.co.uk](mailto:keith@elston-landscapes.co.uk)**

**Expertise / Quality / Peace of Mind**

# Glenfarg Bridge Club



## **Glenfarg Bridge Club - looking for new members**

We currently have 10 members but are always looking for new recruits. Our venue changes from the Church Hall during winter months to the Bowling Club in summer months, i.e. from May through to September.

We normally have two luncheon outings during the year with our next one being in April at the training college in Perth. If you have never tried this venue then we would strongly suggest you do, as food and service are excellent not to mention the very reasonable cost. They also cater for dinners.

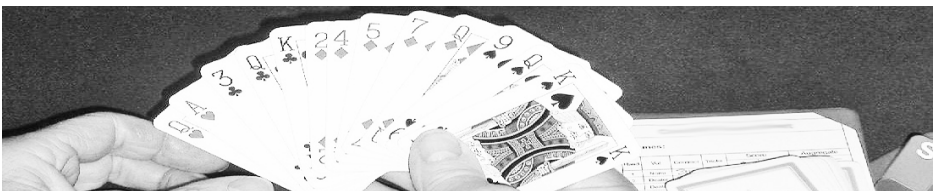
This year our highest scorers have been Sheila Harley in January with 1740 points and Vivienne Hebblethwaite with 2020 in February.

Please feel free to come along and join us on a Friday at 1.30pm.

If you would like any other info contact

Charlie Kinnaird on 01577 - 830337 or

Sheila Harley on 01577 - 830319.



The Famous  
**Bein Inn**

01577 830216



**GRILL NIGHT**

**(Fridays & Saturdays)**

**2 STEAK MEALS**

**WITH A BOTTLE OF RED OR WHITE HOUSE WINE £34.95**

**WINTER BLUES EVENING MENU**

**(Monday to Friday)**

**1 COURSE £9.95 2 COURSES £11.95 3 COURSES £13.95**

**[bookings@beininn.co.uk](mailto:bookings@beininn.co.uk)**

Four Corners was the topic for the meeting on the 11<sup>th</sup> February. Margot on Hardanger embroidery; Allison on Fabric Boxes; Helen on Hairpin Crochet; and Jeanie on Jewellery Making, made for a very interesting evening.

## **Competition winners**

Filled Chocolate Eclairs- 1<sup>st</sup> Alison Harrison; 2<sup>nd</sup> Liz Yull; 3<sup>rd</sup> Margot Moran

Painted Stone----- 1<sup>st</sup> Lillias Johnston; 2<sup>nd</sup> Sheena Chisholm; 3<sup>rd</sup> Alison Harrison

Flower of the Month--1<sup>st</sup> Allison Messenger; 2<sup>nd</sup> Lillias Johnston; 3<sup>rd</sup> Margot Morran

On the 10<sup>th</sup> March we had a very informative talk by Moya Fox from Save the Children. She also spoke about the work they did in Nepal after the earthquake.

## **Competition Winners**

Easter Bonnet-----1<sup>st</sup> Margot Moran; 2<sup>nd</sup> Alison Harrison; 3<sup>rd</sup> Liz Yull

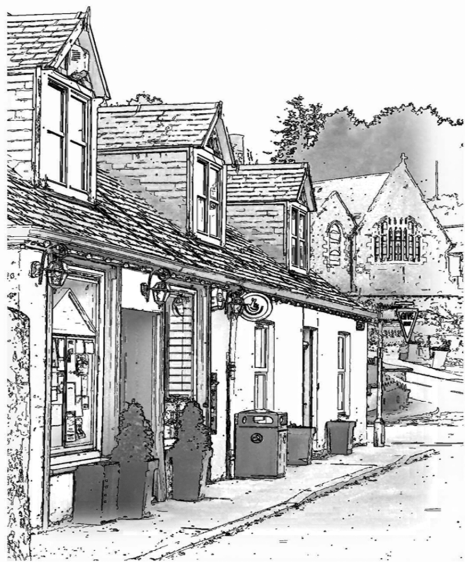
Individual Quiche--1<sup>st</sup> Alison Harrison; 2<sup>nd</sup> Allison Messenger; 3<sup>rd</sup> Liz Yull

Bowl of Bulbs-----1<sup>st</sup> Allison Messenger; 2<sup>nd</sup> Lillias Johnston; 3<sup>rd</sup> Margot Moran

Dates for future meetings- - Visitors welcome

14<sup>th</sup> April: Visiting Institute

12<sup>th</sup> May: A.G.M. and Supper. ( Last meeting of this session)



# Glenfarg Village Store

**MUCH, MUCH MORE THAN JUST YOUR MORNING PAPER**

**Groceries • Fruit & Veg. • Local Eggs  
Fresh Bread & Morning Rolls • Chilled & Frozen Foods  
Baking Goods • Hot & Cold Snacks • Cleaning Supplies  
Wine, Beer & Spirits • Tobacco • E-Cigarettes  
Confectionery • Pick 'n' Mix • Ice Creams • Magazines  
Chemist Sundries • Gift Wrap & Greeting Cards  
Stationery • Pet Products • D.I.Y.  
Lottery • PayZone • Free Doggy Bags  
Parcel Drop Off and Collection.**

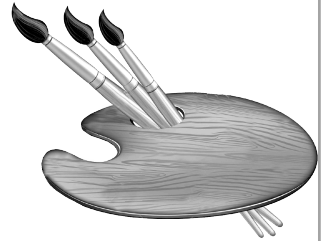
**If you're not there for us, we won't always be here for you.**

**Mon-Sat 7am to 7pm, Sun 9am to 7pm  
Tel: (01577) 830 201**



## **CALLING ALL ARTS AND CRAFTERS**

Another reminder that the Exhibition of local artists will take place on Saturday 30th April and Sunday 1<sup>st</sup> of May from 10am – 4pm, at Glenfarg Village hall.



This year we want to encourage artists from all age groups and all genres to fill the hall to bursting. Last year we were a bit tentative as it was our first exhibition, this year however we want to make it a real community event! We know that the village is bursting with talent - you've proved it!

If you think you might be interested in exhibiting/selling your work, please email us at [glenfargartsproject@gmail.com](mailto:glenfargartsproject@gmail.com)

SO! My talented bakers and sweet toothed chums, we did a final tally and for Sports relief 2016 we have raised £447.00, with an additional 25% from Gift Aid.



That brings Glenfarg's total donation to £558.75!

Very well done and a huge thank you to all involved.

Mark

# Geocaching



What is geocaching? Geocaching (pronounced geo-cash-ing) is a kind of treasure hunt where the treasure is a small waterproof container (the cache) containing a log book and pencil where the treasure hunter can record his find. Geocaching was conceived shortly after the Global Positioning System (GPS) became available to the public on May 2nd, 2000. The improved accuracy of the system allowed for the cache to be placed at a specific location where it can be found using a GPS device.

The first documented placement of a GPS located cache took place on May 3rd, 2000, by Dave Ulmer of Beavercreek, Oregon. The location, seen here was posted as 45°17.460'N 122°24.800'W. A geocache and plaque called the Original Stash Tribute Plaque is now at the site.



It wasn't long before geocaching became worldwide. There are caches to be found all over Europe and at the time of writing there are 288 caches near to Glenfarg.

What is required to follow this activity?

- A connection to the Internet is needed to log on to [www.geocaching.com](http://www.geocaching.com). Here you can create a free account where you then have access to the coordinates for the caches in any area of interest.
- A GPS device. There are many dedicated GPS receivers on the market which can be used but the simplest option is a smart phone and software available for all platforms provided by [geocaching.com](http://geocaching.com).
- A sense of adventure to go out and find places you might never have otherwise known about and see things which would have passed you by.

So you have opened an account at Geocaching.com and you have looked at the caches near to your present location. If you are using a phone it is a good idea to download the various locations, as often you will be out with phone coverage. What do you expect to find when you reach the coordinates? The commonest cache is a hidden Tupperware box. Typical cache "treasures", also known in the geocaching world as swag, are not high in monetary value but may hold personal value to the finder. Aside from the logbook, common cache contents are unusual coins or currency, small toys, and ornamental buttons. Although not required, many geocachers decide to leave behind signature items, such as



personal Geocoins, pins, or craft items, to mark their presence at the cache location. Some caches are very devious such as the nano cache, a very small magnetic box, and the fake magnetic bolt. Here the log is on a roll of paper inside the container.



A nano cache

Once found and the log book completed the cache must be returned to its hiding place. If a geocache has been vandalized or stolen, it is said to have been "muggled". Those not familiar with geocaching are called Muggles, a term borrowed from the Harry Potter series of books.

Fake bolt cache



Geocaching is an activity which encourages going out for a walk. It is free and is especially fun for children who can use their phone for a healthy outdoor pursuit. When on holiday, geocaching can lead you to many places of special interest. But you don't have to go far. Why not get started by having a look down Main Street, Glenfarg. Watch out, though, there may be Muggles about!

# Table Top Sale

12<sup>th</sup> March at Glenfarg Village Hall

When the Arngask Primary PTA decided to hold a fundraising table top sale we were delighted with the community response! The hall was filled with a real assortment of stalls from bric-a-brac to outdoor clothing, fudge to lucky dip bags.

Our pop-up café selling home-made cakes, teas and coffees was busy throughout the event.

A huge £440 was raised on the day which will be going towards providing the pupils at Arngask Primary with a newly revamped garden area including picnic tables and the equipment needed to grow their own vegetables. Hopefully the fruits (and vegetables) of their labour will be available for sale this summer and autumn – so watch this space!

---

## One Of The Tables

One of the tables was taken by Heather Hatten who lives in Glenfarg. This was a new venture for Heather. She had acquired the stock from a colleague, hoping to sell it to raise funds for her son Ross, who lives in Kinross. Ross has cerebral palsy and would like to have a recumbent bicycle.



So, what is a recumbent bicycle? Here is a picture. You can see that the rider is in a reclining position with weight distributed comfortably over a larger area than



normal. The tricycle version also provides better balance. Riding one of these would give Ross an independent method of getting around.

So if you see Heather and Ross at a local car boot sale, do give them your support.

# AUSTIN HEATING & ELECTRICAL

Boiler Servicing and Repairs - OIL, GAS, LPG & ELECTRIC

Aga / Rayburn Servicing & Repairs (Rayburn Guild Engineer)



Registered  
Business



Call - 07786 705261 or 01577 861188

No Call-Out Charge

[www.austinheat.co.uk](http://www.austinheat.co.uk)



## VETERINARY SURGEONS

### CAMERON & GREIG MRCVS

*'Ardmhor', Stirling Road, Milnathort KY13 9XR*



*By appointment only*

Monday - Friday

9 - 10.00am

2 - 3.00pm

6 - 7.00pm

9 - 10.00am

Saturday



Telephone: Kinross 863 494

Website: [www.cameronandgreigvets.co.uk](http://www.cameronandgreigvets.co.uk)

*Large and small animals  
24-hr emergency service*



# ***Earnside***

***U.K. & Continental  
Travel***

Tel: 01577 830360

E mail: [info@earnside.com](mailto:info@earnside.com)

Website: [www.earnside.com](http://www.earnside.com)

# Arngask Primary School

## **Cross Country Running Championships**

Well done to all our pupils who participated in the Cross Country Running Championships held at Perth Race Course. Our winners are:

Moray Sturgeon won first place in the Boys Race.

Samuel Prescott was fourth, Jamie Morton was eighth, Mitchell Scott was tenth. Archie Reid was eighteenth, and Blair Laing was twentieth.

Girls Race: Anna Johnstone was second. Millie Roe was sixth.

Moray Sturgeon, Mitchell Scott, Jamie Morton, Anna Johnstone and Samuel Prescott also won the best Rural Schools Team Shield

This is a real achievement as there was over 160 runners in the Rural Schools Race.

## **Safe Routes to school**

All pupils are asked to use the footpath to enter the playground rather than walk through the carpark. Please remind your child to use the footpath to prevent any unwanted accidents.

The Parent Council have been liaising with The Rural Access Committee of Kinross-Shire (TRACKS) and the Glenfarg Paths Group on a project to improve 'The Avenue' that runs from Greenbank Road to Greenbank Crescent. This will enable pupils to travel to school safely and encourage parents to drop their children further from school. Your comments on lighting 'The Avenue' are needed. Please speak to a member of the Pupil Council or email [Arngask@pkc.gov.uk](mailto:Arngask@pkc.gov.uk) with your suggestions.

## **Garden Day**

You are invited to our next Garden Day on Wednesday 20<sup>th</sup> April. Members of Glenfarg and Duncrive In Bloom will also be in school to plant seeds with pupils.

## **Volunteers**

We're looking for volunteers: to organise the loan and return of our Maths Games Bags, library books, and photocopying and laminating.

If you are free for an hour every week/ fortnight please contact the school office.

## **Gardening**

If you have any unwanted wellies or boots of any size please hand them into the school office. We would also welcome any donations of spring bulbs to plant in the school grounds.

Marie Connor, Headteacher

# 38<sup>th</sup> GLENFARG FOLK FEAST

Kinross is the location for the 38<sup>th</sup> Glenfarg Folk Feast which begins on Friday 8<sup>th</sup> April and continues throughout the entire weekend, finishing on Sunday 10<sup>th</sup> with a farewell concert headlined by the amazing Dougie MacLean.



The “hub” for the entire weekend is Backstage at the Green Hotel where all the main events are to take place. The main features are a welcoming ceilidh on the Friday with The Orwell Ceilidh Band, with two wonderful concerts on the other



weekend evenings. The Saturday concert line-up consists of The Emily Smith Duo, Maurice Dickson, Shona Donaldson and Paul Anderson, and the Farg Folk; Emily won the Scots Singer of the Year award in both 2008 and 2014 and is joined for the concert by her multi-instrumentalist husband, Jamie McClennan.





Emily Smith

As well as the internationally renowned Dougie MacLean, the Sunday concert features Winter Wilson, and Roberto and the Tickety Two; a brilliant and varied night's entertainment.



Roberto & Tickety Two

Also throughout the weekend, visitors will find many other attractions to keep them entertained including a Children's Concert on the Sunday with Artie Trezise (1.30pm - 2.30pm), singarounds, a fun song competition and the 31<sup>st</sup> World Puff-a-Box Championship!

The Club committee are delighted to be holding the Feast in Kinross and are looking forward to welcoming everyone for what should be a great weekend of entertainment, fun and fantastic music.

Full details of the Feast are available at [www.glenfargfolkclub.com](http://www.glenfargfolkclub.com), and tickets through the ticket hotline 07473 931440 or email [tickets@glenfargfolkclub.com](mailto:tickets@glenfargfolkclub.com).



Winter Wilson

# Glenfarg Tennis Club

## **Tennis Numbers Hit New Highs.**

Saturday 12th March was an amazing day. It rained in the morning and was dull and cloudy in the afternoon, but that didn't deter over 70 people playing some tennis at the inaugural Mixed Doubles and Cocktails event which was held down at the courts on Wallace Park.

It was a tremendous turnout for a fabulous day of tennis, and despite the



pairings getting a little confused and us losing power to a blown fuse for an hour, everyone had a great time.

The tennis was won by Ewan Nicol and Fleur Nash- not an initial pairing, nor an established team on the circuit, but perhaps one we will hear more about in the years to come. They defeated the early favourites, Tara

Winterton and Ian Sturgeon in a delayed final under floodlights.

Supper followed- a variety of lasagnes and curries made by the members and served to the participants, followed by an oversubscription of puddings. I know they were oversubscribed as I sit here eating one on the following Tuesday!

Then, for some, the highlight of the day. Glenfarg's newest ceilidh band made their debut. Made up entirely of village inhabitants who play tennis, they plied us with slip-jigs and reels until our heels fell off, and even then we were introduced to a variety of Basque dances (the Fandango originated in the Basque country) to see us towards the Auld Lang Syne hour, played by the band with a guest chanterist.

I'd just love to thank everyone who had any part in the day. At this time, without the hotel, we've got to prove we can entertain ourselves, sometimes by participating in things which wouldn't be our first choice activity. The fact that so many were involved, in the playing, in the food preparation, serving, washing and drying up and then risking the mirth of others by joining in the dances, some playing in public for the first time, and our illustrious magazine editor making a guest appearance to present the trophy, says multitudes for them and I commend them all.

But I've got to put in a special mention for John Allison who interrupted his wedding anniversary dinner to dig us out of an electrical hole which threatened the whole evening. Thanks John. Please accept free family membership for the year and let's see you down there!

Roll on next year when two new names will be added to the base of the now famous Glenfarg Tennis Club Mixed Doubles and Cocktails Goblet.

On a different subject altogether, we're now organising this year's bike run to Stirling Court in Stirling University, via Gleneagles and Dunblane, returning via Dollar.

If you're interested, and there's no reason not to be, first ring Tim on 830879 and secondly, start practicing. We'd love to have you along.

# Glenfarg Beavers



The Beavers had a fantastic Burns Night, with lots of games including shot putt (potatoes), toss the caber (Pringles pkts) and tug of war. They had a lovely tea of mashed potatoes, carrots, beans and haggis, admittedly only one of them had this but the leaders did very well out of it, followed by shortbread biscuits, which every one enjoyed. Jack read Robert Burns poem 'To A Haggis', not an easy task for such a young man but very well spoken. February was fun with a Space Day, 6 Beavers invested, Pancakes and Mothers Day presents made.

Yet to come in March was an evening at Pets at Home, and a Field to Fork potato factory tour, so lots more fun for us all..

Jan Pedley



## JAMESFIELD FARM SHOP & FARMHOUSE KITCHEN



### CELEBRATING 30 YEARS CHEMICAL FREE

Organic produce, home baking, Fairtrade products and handcrafted gifts

Traditional home cooked meals, delicious cakes and desserts

Home made award winning steak pies

Highland Drovers roasts, steaks, sausages, burgers and lamb in stock

Special occasion cakes, full carrot cake, banoffi pie etc. made to order

A MAIN COURSE FOR 2 FOR ONLY £12—Available Monday to Wednesday

\*terms and conditions apply

BUY 1KG OF NEW POTATOES AND GET 1KG FREE

#### Opening Hours

Monday to Saturday - 9.00am until 5.00pm - Food served until 3.00pm

Sunday - 10.00am until 5.00pm - Food served until 4.00pm

**Jamesfield Farm Shop & Farmhouse Kitchen, By Abernethy, Fife, KY14 6EW**

**Telephone 01738 850 498**

**Email [jamesfieldfarm@btconnect.com](mailto:jamesfieldfarm@btconnect.com)**

**Facebook Jamesfield**

**[www.jamesfieldfarmshopandrestaurant.co.uk](http://www.jamesfieldfarmshopandrestaurant.co.uk)**

# Glenfarg Community Cinema



We have been traversing the world recently at the Glenfarg Community Cinema. In February we went to Kenya for **The Constant Gardener**. Wonderful, wide African landscapes were the accompaniment to a story of global conspiracy, when pharmaceutical companies take advantage of people in need of health care to trial their new drugs, sometimes with disastrous consequences. Here is what our audience thought of the film.

Awful  
4.5%

OK  
4.5%

Good  
34%

Very Good  
43%

Fantastic  
14%

Although a work of fiction, the reality of this situation was backed up the following month when we showed a short film, *I Want To Be A Pilot*, made in one of the slum communities of West Africa.





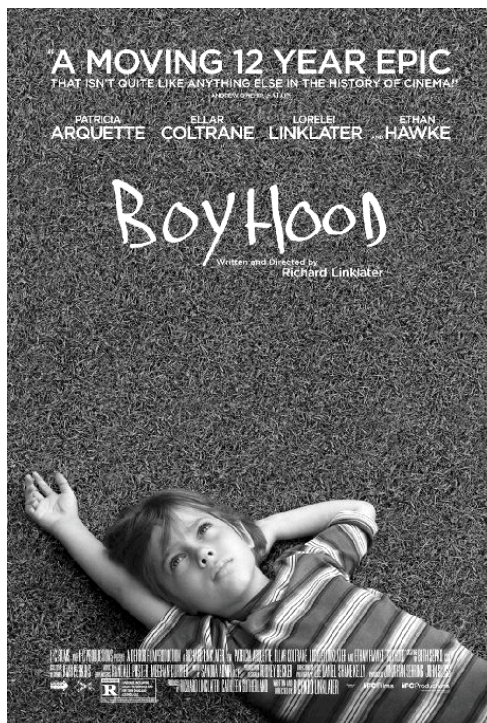
Then in March we travelled from Guatemala, through Mexico and finally into the United States, in the company of three teenage migrants hoping for a better life. The film, **The Golden Dream**, was the work of a Mexican director for whom this was a labour of love. He had spent months among the migrants, travelling with them on trains and hearing their harrowing stories. The result was a powerful film with the feel of a documentary, using untrained young actors chosen from the communities they represented. The general feeling seemed to be that the film was rather slow, and at the end we certainly felt that we had been on a long train journey! But we had been exposed to the reality of a situation which is, unhappily, only too topical at the moment.

Awful	OK	Good	Very Good	Fantastic
4%	37%	37.5%	37.5%	0%

On April 8<sup>th</sup> we will be showing **Boyhood**, the film that took 12 years to make using the same actors.

It follows an American boy from early childhood to his arrival at college. It was nominated for Best Picture Oscar in 2015. Patricia Arquette won the Oscar for best supporting actress.

Then in May, we hope to finish the season with something special. Watch the Grapevine for details.



# Glenfarg Scouts



## Glenfarg Burns Supper 2016

In January, the people of Glenfarg celebrated the life and work of Scotland's famous poet Robert Burns. The scouts and villagers put on an evening of food, drink, poetry, song and dance which had everyone celebrating into the small hours in a real community spirit. Special thanks go to Heather Wilkins and MC Bill McPherson for pulling it together, the speakers – Brian Duff, Andrew Vaughan, Philip Ponton and Leigh Smith, and to the scouts who served the meals. The audience were well entertained by Carol Osbourne and Steven Kennedy with Burns songs and piping, Tilly on the accordion, capped off by ceilidh music from Glenfarg Scottish Dance Band. Many others were involved in the team effort to deliver this really enjoyable event, which raised £800 for the Scout group– well done to all involved.

## Skiing in Glenshee

Twenty seven scouts, explorers, leaders and parents gathered just after seven on the Saturday morning for a day's skiing in Glenshee. The forecast earlier in the week didn't sound too good but the sky was clear which seemed a good start and there were no reports of the road being closed due to snow either.

Arriving in Glenshee the parking attendants guided us across the sheet of ice that forms the carpark first thing in the morning. We were impressed by the speed at which the guys in the ski hire kitted out the 20 people who were hiring equipment. Attaching the lift passes and attaching them securely was slightly more challenging.

Robert, Isobel and Tara took the skiers up to Claybokie to put them into appropriate ski groups to maximise the skiing opportunities. Ali led the older boys, some of whom had been celebrating their mate's 18<sup>th</sup> birthday earlier in the day, or they led Ali all over the ski area. They were high enough up the hill to be



able to lean on the wind. Robert, Tara and Isobel took Moray, Louise, Cara, Aiden and Anna and showed them various exercises to improve their balance and control as they explored the ski area.

The beginners headed to the nursery area to find their ski legs with Lisa, Debbie and Christine. After some gliding on one leg challenges (with chocolate for prizes) the group progressed to the rope tow then the dink-dink tow. Before lunch Debbie took Ben, Sam, Lesley and Heather up the Sunnyside to practise on the more advanced beginner runs.

Most of the group managed to meet up in the car park for lunch where we could see and hear skiers struggling on the tiger run. Ali and his group had skied it and told us that it was a sheet of ice at the top and not worth skiing. Cara was very disappointed as she wants to ski it.

The group leaders swapped around after lunch. Mark, Robert, Archie, Jack Fergus and Rachel headed back to the nursery area with Christine, Isobel and Tara for assessment. Tara and Mark stayed at the dink-dink and the others headed to the Sunnyside two looking for more challenges. Gavin and Malcolm appeared to help get the group up the tow but it proved to be beyond the abilities of all but Robert and Rachel. At the top of the tow Rachel looked down and announced that she was terrified and didn't know how she could get back down.

Rachel and Robert joined Debbie's group on the Tom Dearg run and discovered what happens when the tow stops and you are on it. They also learnt that tow etiquette allows you to go to the front of the queue if you fall off the tow at the start.

Isobel and Lesley took Fergus and Jack up the Badenoch chair but Archie opted to stay with Mark who had been to the first aid post on the back of a skidoo after his knee played up again.

We all returned to the ski hire for half three. Aiden and Ben opted to go for a few more runs with Christine on the Sunnyside before heading home. The weather was about as good as it gets skiing in Scotland, blue sky all day, sunshine with a bit of a wind. The group is keen to go back and build on their experiences.

# ***Building & Repairs***

Woodmarch Kinnesswood

**Phone: 0798 374 2524**

[buildingandrepairs@gmail.com](mailto:buildingandrepairs@gmail.com)

[www.buildingandrepairs.co.uk](http://www.buildingandrepairs.co.uk)

- Roof Repairs
- Flat Roofs
- Slating
- Rhones/Guttering
- Down Pipes
- Skews
- Chimneys
- Brickwork
- Plastering
- Cornices
- Cementwork
- Ceilings
- Fascias
- Stoves
- Fireplaces
- Stonework

*All Work By Apprenticeship Served, Experienced and Insured Tradesmen.*

## Give your feet a Treat

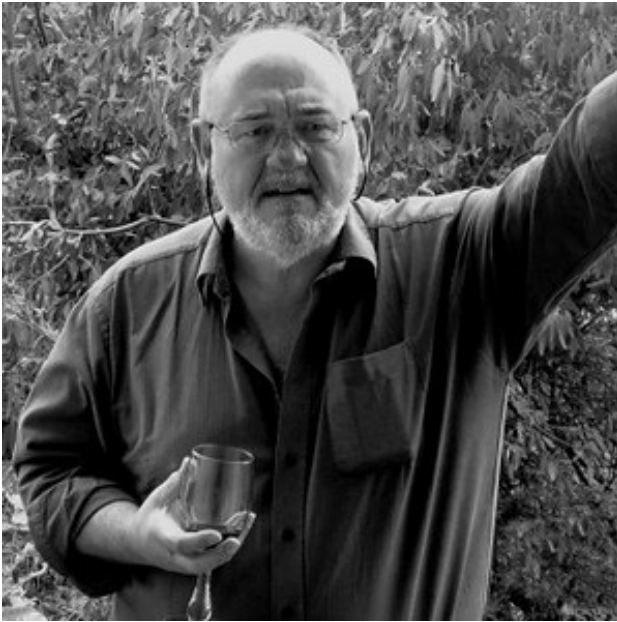


Private podiatry/chiropractic in  
the comfort of your own  
home.

**H.P.C. Registered**

**Lisa Allison BSc Tel 01577 830678**

# Donald MacKenzie



Having been a member of the Community Council since 2007 and having been the chairperson since 2011, I think I've long overstayed my welcome and it's time for new people with new ideas to take over the reins and steer the Community Council into the next phase of its evolution.

Some people question the value of a Community Council. In a place such as our community, I think it can be a hugely influential and effective means of gathering the views of the community and of making sure these are heard. But the Community Council will only ever be as effective as the community wants it to be. I think it's a great body and all power to its elbow.

As for me ... Well, I'm taking on the role of chairperson of the Board of Trustees of a Dundee-based child care charity. I've got my BA in Photography course, about which there was an article in the last Newsletter. And I'm getting myself ready for my photographic trip-of-a-lifetime for a month later this year to Yosemite National Park in California.

# Red Velvet Cake – an American import!

Red velvet cake has been creeping up in popularity in the UK. It has a subtle chocolate flavour and a distinctive red colour. It introduces an element of surprise as it's still relatively unusual. Some brides ask for it as one of the tiers of their wedding cakes.

It originates from the southern states of America. The standard ingredients are buttermilk, butter, cocoa, and flour. Originally the red-brown colour came about as the result of a reaction between a component in cocoa, and the acidity of the buttermilk. Sometimes beetroot is used, giving moisture as well as colour. Nowadays red food colouring is the most common choice. This rose in popularity when a food colouring manufacturer promoted it widely in the States after the Great Depression of the 1920's.



Cream cheese icing or buttercream are often used to fill the layers – the more traditional 'roux' icing takes much longer to make.

Its rise in popularity in the US and Europe might be linked to the appearance of a red velvet 'groom's cake' in the film 'Steel Magnolias' in 1989. The Waldorf-Astoria hotel in New York call their version the 'Waldorf-Astoria' cake so it seems they are also helping to keep red velvet cake popular.

Leigh Smith.

# LEIGH SMITH CAKES



Bespoke Cakes with a 'Wow' Factor



View a selection at  
[www.leighsmithcakes.co.uk](http://www.leighsmithcakes.co.uk) and on  
Facebook 'Leigh Smith Cakes'

Book in your special dates for 2016 now  
so they're reserved for your cakes!

The Spinney, Duncrievie Road, Glenfarg  
Tel: 01577 830256 Email: [info@leighsmithcakes.co.uk](mailto:info@leighsmithcakes.co.uk)

# Winnie Barlas

1912 – 1916

A popular and well-known friend throughout Glenfarg, Winnie Barlas, who died aged 103 in January 2016, was born in Glasgow on 26 December 1912.



Winnie always referred to herself as a Boxing Day baby and her sister as a Christmas Day baby. Winnie joked that her first real birthday party was when she was 90!

After her mother died just after the beginning of the Second World War, Winnie, the youngest of the 4 children, looked after her father until he died at the age of 51. Winnie then went on a long visit to her sister, who was living in the Sudan and this was where Winnie met her future husband. They married in June 1952.

Winnie and her husband moved to Glenfarg in 1955, shortly after the birth of her two daughters in 1953 and 1954 respectively. They lived on a farm at Hilton Hill until about 1971/72, when they

had The Knowe built and lived there for about 35 years.

Winnie loved having her grandchildren to visit from their homes in Orkney and France. She also enjoyed gardening, visits to the east Fife coast and St Andrews to revive happy family memories and going on picnics with her husband, also painting while he fished.

Educated at a Quaker School in Yorkshire, Winnie went on to Auchencruive Agricultural College and throughout her twenties she lived on a farm at Kingask until its sale in 1940.

Winnie regularly attended worship at Arngask Church and was an active member of Glenfarg SWRI, serving as President, Secretary and Committee member during her many years' membership. She was for many years heavily involved with organizing and exhibiting at The SWRI Kinross Show. A highly skilled embroiderer, Winnie worked on the design and creation of the Glenfarg "Rural" banner.

In 2008, Winnie, as the oldest resident at the time, was invited to open Glenfarg Village Hall, following its refurbishment.

Winnie enjoyed good health throughout her life, and managed to look after herself until she was 99 and three-quarters, before taking up residency in Ashley House, Milnathort. There must be something in their longevity genes, because Winnie's elder sister Cecile lived until she was 104!

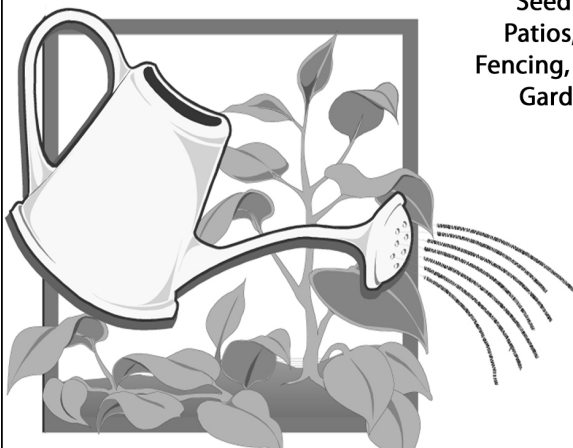
Alison Harrison

# Brian Todd Landscapes

1 Ash Grove, Glenfarg

Contact: 01577 830 728

or 07718 916 318



Seeding, Wall Pointing, Repairs,  
Patios, Driveways, Hedge Cutting,  
Fencing, Gutters cleaned and repaired,  
Garden Maintenance, Slabbing  
& all other odd jobs

**FREE  
ESTIMATES**

**COMPETITIVE  
RATES**

## EDEN LEGAL



**FRIENDLY, LOCAL SOLICITORS WITH A CLIENT CENTRED APPROACH.**

*WE WILL COME TO YOU.*

**NOW OPEN AT 21-25 HIGH STREET, KINROSS**

**TEL: 01577 351028**

(or our Fife Office Tel: 01382 339 470)

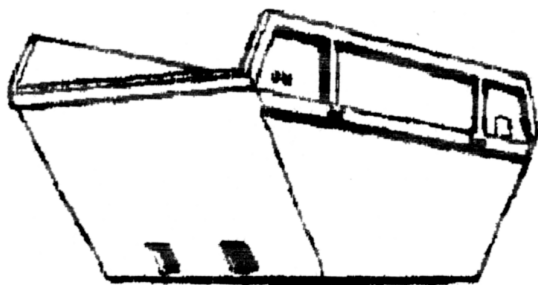
- House Purchase and Sale
- Agricultural Law
- Renewable Projects
- Wills and Powers of Attorney
- Partnership and Company Law

**E** [info@eden-legal.co.uk](mailto:info@eden-legal.co.uk) **W** [www.eden-legal.co.uk](http://www.eden-legal.co.uk)

Eden Legal Ltd registered in Scotland No.452433



# Binn Skips



Binn Farm • Glenfarg • Perthshire  
PH2 9PX

**Tel. 01577 830 833**

**Fax. 01577 830 488**



# GLENFARG COMMUNITY COUNCIL

## MINUTES OF THE LAST MEETING

Monday 7<sup>th</sup> March 2016

Glenfarg Village Hall

**PRESENT:** CCllrs Burlison, Loudon, Mackenzie, Pilmer, J. Taylor, Warder, Watson Also present - Cllr D.Cuthbert

**APOLOGIES:** CCllr Ponton, CCllr Horsman

### MINUTES OF THE LAST MEETING

CCllr Watson read out a proposed addition to the minutes of the 11<sup>th</sup> January meeting, which was agreed.

*A member of the public asked the TRACKS Officer about the Hilton of Duncrievie to Glenfarg core footpath, a section of which is difficult to walk due to ploughing. This difficulty has been raised in the past, and the TRACKS Officer agreed to bring the matter up with members of the Perth & Kinross Council in the near future.*

The minutes were then adopted.

### MATTERS ARISING:

Carved Animals in Wallace Park CCllr Watson reported that these were presently being painted and should be returned to the park within the next 4 weeks. The final invoice for materials comes to £167.80

It is hoped to visit the school before the end of term to announce the winner of the colouring competition. A small prize up to the value of £10 was agreed and the winner will be photographed with the newly painted animals for an article in the Glenfarg Newsletter. CCllr Watson

Plans for the Avenue The TRACKS Officer has requested a letter of support from the Community Council. This was agreed in principle

# **M G Plumbing & Heating**

Professional and Friendly Service

Bathrooms to Boilers (Oil, Gas, LPG)

Guttering to Ground Source Heat Systems

Fully Insured

2 Year Guarantee on all work

Based in **Glenfarg** covering Tayside & Fife

**Tel 01577 830307**



## **FERRIER & MACKINNON** OPTOMETRISTS

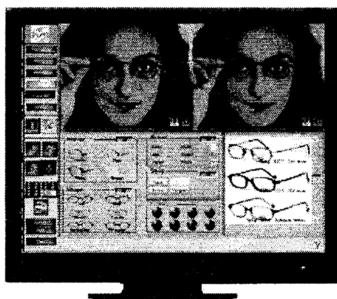
74 High Street, KINROSS KY13 8AJ Tel: 01577 864 009

27/29 Chalmers Street, DUNFERMLINE KY12 8AT Tel: 01383 721 502

We are a family firm of Optometrists dedicated to professional, quality eyecare.

Introducing our new

FRAME  
IMAGING  
SYSTEM



SEE YOURSELF  
WEARING A FRAME  
BEFORE YOU  
ORDER ANY  
SPECTACLES!

WHY NOT POP IN FOR A  
DEMONSTRATION - WE  
WOULD BE PLEASED TO  
SEE YOU.

Opening hours: Monday to Friday 9.00am - 5.30pm  
Saturday 9.00am - 5.00pm

and details of what is required will be sought. *Secretary*

Wallace Park Storage CCllr Ponton had reported that the required length to contain the marquee would be 20 feet. CCllr Warder reported that she had so far been unable to contact the correct person at A&J Stephen Builders to discuss possibility of them supplying a storage unit. The original suggestion had been for a shipping container, but it was agreed that some other kind of storage unit might be more aesthetically pleasing. There was concern that planning permission might be needed and the whole issue is to be pursued. *Secretary*

Vehicle Activated Signs The installation is presently taking place. There has been a very positive response from members of the community.

Repairs to wall Duncricvie Road / Wallace Park CCllr Watson reported that she had requested the Community Payback Team to inspect the wall with a view to carrying out necessary repairs. In this inspection, the part of the wall where a tree is pushing out a particularly large stone was deemed to be dangerous and fenced off accordingly. The parks department had agreed last November that they would remove this tree and make safe the wall at this point. They will now carry out a new inspection within the next few days. The Community Payback Team advisor was unsure about the possibility of more repairs being carried out, as large stones would need the use of a hoist. He is to inform the CC of the decision.

CCllr Watson reported the removal by persons unknown of a wire fence along the wall from the area of the substation to the gate into the park. It was felt unnecessary to pursue this at present.

Damage to Main Street Wall CCllr Watson reported that BEAR Scotland have definitely stated that this is the responsibility of the Perth & Kinross Roads Dept.



#### STOVES

All the main manufacturers of stoves are available and we can source almost any stove. To mention just a few Charnwood, Stovax, Hunter, Di Lusso, Firefox, Adura, Arrow. Pop in to the showroom and see the stoves up close.

#### SPARES

Replacement Glass, Firebricks, Rope seals and Spare Parts are all available and can be fitted by our trained engineers in your home. Flexible liners (15 yr guarantee) and chimney systems available for the self-installers.

#### INSTALLATION

Our Hetas trained engineers can fit the stove of your choice after carrying out a FREE site survey. You don't have to buy a stove from us. We can fit your own stove - subject to suitability. All building works carried out by our tradesmen.

#### FUEL SUPPLIES

We stock kiln-dried hardwood logs (<20% moisture) supplied in handy nets or in bulk from our specially designed tipper trailer. Kiln dried kindling and eco-logs (briquettes) made from hardwood supplied in 10kg bags. Delivery service available.

**Showroom & Workshop 62 Muirs - Kinross KY13 8AU**

**Tel: 01577 330526 Mob: 07885 722125**

**W: [www.stovestuff.scot](http://www.stovestuff.scot)**

**E: [craig@stovestuff.scot](mailto:craig@stovestuff.scot)**



FOR A FREE  
SURVEY CALL  
US TODAY

## **POLICE REPORT**

As no police officer was present at this point, there was a brief discussion on any observed problems. There had been several reports of a white transit-type van observed in the village whose driver had been acting suspiciously. The usefulness of the Neighbourhood Watch ([watch@glenfarg.org](mailto:watch@glenfarg.org)) and other social media was commended. Cllr Cuthbert also mentioned the police website Community Watch ([www.pkcommunitywatch.co.uk](http://www.pkcommunitywatch.co.uk)) which aims to improve communications between the local community, police and other Community Safety Partnership agencies working in the area. Residents are advised to join for up-to-date information.

## **APPOINTMENT OF OFFICE BEARERS**

Resignations, for personal reasons, had been received from CCllrs Duncan and H.Taylor. They had been thanked for their service by the Chair and invited to return to the CC in the future if their circumstances allowed.

Planning portfolio – now being led by CCllr Pilmer

Emergency Plan coordinator – Dave Arnold, who initiated the plan, has been approached to take on the role.

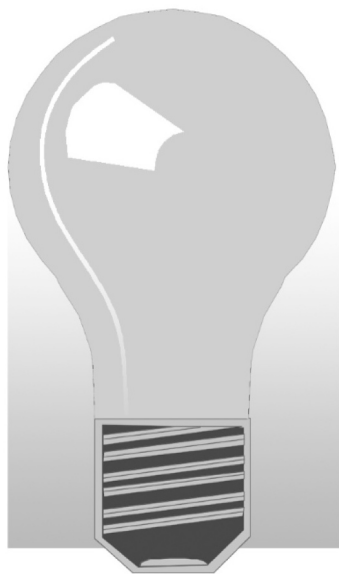
Chair & Vice Chair – CCllr Mackenzie reminded the CC that he would be stepping down from the role of Chair at the AGM in May. It is imperative that the other members of the CC discuss amongst themselves who should take on these roles before the AGM.

## **TREASURER'S REPORT**

Expenditures since last meeting – printing of December and February newsletters £580, Christmas lights installation £270, Salt for spreader £35.96, Micro grant £69.34.

GCC Balance on Account £234.57

GCC Newsletter Account £11,238.99



# *John Allison*

## *(electrician)*

*'Ardblair', East Blair,  
Glenfarg, Perth PH2 9QL*

*Tel: 01577 830 678*

*Mobile: 07717 791 484*

*Email: [johnwallison@btinternet.com](mailto:johnwallison@btinternet.com)*

*All types of electrical work undertaken*

*Also:*

Oil and gas central heating faults ~ Telephones

Computer network cabling ~ TV aerials and  
distribution ~ Satellite re-alignment, alterations and  
distribution ~ Wall mounted TVs installed

***FREE ESTIMATES/ADVICE***

School Fund £541

Total funds held £11,680.26. It was noted that this will be substantially reduced by the costs of the Vehicle Activated Signs.

**PLANNING:**

CCLr Pilmer reported on applications since the last meeting.

1. Extension to dwelling house relating to Avalon, Drunzie – Approved
2. Erection of dwelling house in principle on land c/o Duncrevie House – Undecided.
3. Erection of dwelling house in principle on land south of Brampton House – previously rejected but new submission is Undecided
4. Modification to permission for change of house type at plot 1 Drunzie. – Undecided
5. Shire end Solar electrical development permission. – Approved
6. Change of use of the Glenfarg Hotel to 12 numbered flats – Undecided

The CC Planning sub-group had submitted letters of support for objections to Applications 2 and 4 above. Cllr Cuthbert emphasised that the CC needed to submit its own letter of objection on planning grounds to trigger a referral to the Council's Development Management Committee.

Members of the CC Planning sub-group have attended a recent training event organised by P&KC.

# ALPHAVET VETERINARY CENTRE

62 MUIRS, KINROSS

For a caring professional service for all domestic pets



**TELEPHONE 01577 863 328**

E-MAIL: [alphavet@alphavet.co.uk](mailto:alphavet@alphavet.co.uk)

WEBSITE: [www.alphavet.co.uk](http://www.alphavet.co.uk)

Scotland's 1st Veterinary Practice Website!

Consultations by appointment

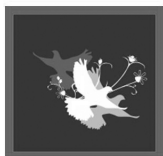
Monday to Friday 9.00am to 12.00 noon  
and 4.00pm to 6.00pm

Saturday 9.00am to 12.00 noon

Reception is open: Monday to Friday 8.30am to 6.30pm  
and Saturday 9.00am to 12.00 noon



***For our 24-hour Emergency Service  
please telephone 01577 863 328***



## PRECIOUS CARDS

- Personalised Wedding Stationery -

Precious Cards is a family business based in Duncrigvie.

We create beautiful handcrafted wedding stationery and accessories  
at affordable prices.

Please visit our website to view our collection.

Contact Andrea on 07434 198 662

Email [andrea@preciouscards.co.uk](mailto:andrea@preciouscards.co.uk)

[www.preciouscards.co.uk](http://www.preciouscards.co.uk)



## **FURTHER POLICE REPORT**

With the arrival of a police officer, the Police Report was revisited. The officer had noted 3 incidents within the Glenfarg area – 2 reports of suspicious vans, one of which was confirmed as a delivery, and one incident of theft of number plates from a vehicle. It was also noted that there have been reports on our local social media of suspicions of oil theft. The diligence of the local community and the usefulness of social media were commended by the CC.

## **CORRESPONDENCE:**

The Secretary reported that the majority of correspondence received was not of interest to the CC, and a small number of items of interest had been circulated to CCllrs.

### **AOCB:**

Glenfarg Tennis Club has reapplied to P&KC for permission to remove the trees on the edge of the tennis courts, and had asked the CC for their support in this matter. Previously, the CC had been reluctant to agree to the removal of the trees, and the P&KC advisor had found against their removal as they do not support the felling of trees unless absolutely necessary. It was decided that the CC would consider this matter when the advice of the expert was available.

Potholes It was noted that there were a considerable amount of potholes in roads around Glenfarg, many of which had been reported by residents and some repairs made. However, the Roads Department's heavy workload was also recognised. CCllr Burlison reported that the potholes were particularly bad on the road from Newhill to Path of Condrie, as far along the road as the site of construction work at Templehill. Although it is not possible to say that the damage is due to heavy plant, it was decided to investigate

# YOUR LOCAL PLUMBER

**NO CALL OUT CHARGE - NO JOB TOO SMALL  
DISCOUNT FOR SENIOR CITIZENS**

- Boilers - New Installations, Repairs and Servicing (OIL, NG & LPG) & Landlords Safety Certificates
- Bathrooms - New Installations, Upgrades & Shower Repairs
- Central Heating - Radiator valves repaired & replaced, system descale & flush, new radiator installations, Under floor heating, Fitting of gas hobs & cookers
- Dripping Taps - Outside Taps - Plumbing in washing machines & dishwashers - Toilet Repairs - Drains etc



**DOUGLAS MILLER**  
**01577 861623**

**WORCESTER**  
Bosch Group  
Accredited Installer

# Stewart Funeral Directors

14 High Street, KINROSS KY13 8AN  
Tel. (01577) 864607



**Modern Hygienic Preparation Room**  
**Private Family Viewing Suite**  
**24 Hour Personal Service**  
**Specialist Ambulance Transfers**  
**Funeral Planning Consultations**  
**Memorial Sales by Regency Memorials**

**24 Hour Emergency Service Tel. (01577) 864607**

whether the agreement with contractors allows for road repairs to be carried out at the conclusion of construction.     *Secretary*

Grapevine Email Service CCllr Watson reported that the editor of this service had resigned for personal reasons. Mr Crossey, who had been the standby editor, had agreed to take on the role.

The Newsletter Editor had requested the purchase of 2 pen drives, to be able to transport the latest edition of the newsletter to the proof readers. This was agreed.

**The next meeting of the Community Council will be the AGM. This will be held on 9th May 2016 and will be followed by a short Business Meeting.**

---

## Social Hub Working Group

When faced with the sudden closure of our only hostelry, a cross section of our community formed the Social Hub Working Group and readers of the Glenfarg Newsletter will have read the minutes of the group's initial meetings in the February issue. However such has been the activity of the group during January, February and early March, that there simply isn't enough space in the Newsletter to cover all of the subsequent minutes. But don't despair dear reader, the minutes are all on the Glenfarg website where Janet has kindly created a dedicated page. Should anyone be unable to access these online please contact the group secretary on 830343 and request a paper copy.

Meanwhile as the actions of the group may impact on the whole community, please join in as much as possible in achieving the ultimate goal of securing a social hub in this wonderful village. Keep an eye open for any future public meetings, any support requests and any community action requirements.

# KINROSS Physiotherapy



- SPRAINS/STRAINS/TEARS
- LOWBACK/NECK PAIN
- HIP/KNEE/ARM PAIN
- GOLFER/TENNIS ELBOW
- TENDON INJURIES
- ARTHRITIS
- TMJ (JAW PAIN)
- POST FRACTURE OR DISLOCATION
- REHABILITATION FOLLOWING SURGERY



## OPENING TIMES

MON - FRI  
10am - 9pm

37 New Road, Milnathort

Kinross KY13 9XT

**01577 864875**

**07912 100 845**

[enquiries@kinrossphysiotherapy.co.uk](mailto:enquiries@kinrossphysiotherapy.co.uk)



**AVAILABLE 7 DAYS A WEEK  
LOCAL RELIABLE PROFESSIONAL  
SPEEDY SERVICE FOR EMERGENCIES**

**All pests professionally dealt with  
Free Surveys Fully Insured  
Domestic Commercial Agricultural  
Contract work or One-off visits**

**rats • mice • moles • rabbits • squirrels  
flies • fleas • bedbugs • wasps • bees • ants  
moths • spiders • insect infestations • rabbit fencing  
bird proofing • pest birds • all other problem pests**

**Call us for all your pest problems.  
We also install all types of bird-proofing.**

**01738 813751**

**07767 353535**

**[www.andylawpestcontrol.co.uk](http://www.andylawpestcontrol.co.uk)**

**Bridge of Eam, Perth.**



# J. Stewart & Son

## Landscaping and Paving



*Landscaping and Ground Works*



Ask about turfing

ALL WORK IS CARRIED OUT BY TRAINED CRAFTSMEN  
AND IS FULLY GUARANTEED

Call for a **FREE** no obligation estimate

**Tel: 01738 245465**  
**Mob: 07516 595192**

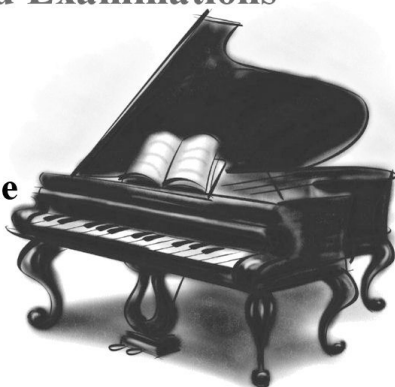
Quality just can't get any better!

**LANDSCAPING & DRIVEWAYS**  
**Monoblock • Stone Paving**  
**Slabbing • Decking**  
**Sandstone Walls • Re-rendered**  
**Drainage • Gravel • Cobbles**  
**Heritage • Cotswold Drives**  
**Patios & Paths • Parking Areas**  
**Land Engineering**  
**Tidying and Full Garden Service**  
**Tree Surgery**



**Violin, Piano and Theory teaching**  
**by experienced teacher/performer**  
**Many distinction and merit**  
**candidates in Associated**  
**Board Examinations**

**For Private Tuition Telephone**  
**Gloria De Pettes DRSAM**  
**on 01577830403**  
**or 07902799179 (mobile)**





# **MJC**

## **ROOFING AND JOINERY**

### **Some services we provide:**

UPVC Facia Boarding  
Guttering  
Small Roof Repairs  
Full Strip & Re-Tile  
Solid Hardwood Flooring Window  
Fitting  
All major joinery work undertaken  
with all trades supplied

**Serving Perth, Kinross  
and the local surrounding  
area.  
No job too big or small**

Contact Us for a **Free Consultation**

**01577 898352 | 07774 695816**



## **TYREFAIR LIMITED**

Unit 11  
Bridgend Industrial Estate  
Kinross

There is now a specialist tyre and battery dealer in Kinross that opens every day of the week, and has tyres and batteries at prices to suit your budget. **TYREFAIR** is a family business, with staff that have many years of professional experience in the tyre trade, and you can find them at **Unit 11, Bridgend Industrial Estate, or telephone on KINROSS 865656**. **TYREFAIR** welcomes trade account and offers the following goods and services:

- New tyres for cars and vans
- Guaranteed re-treaded tyres
- 4x4 tyres for business and leisure
- High performance tyre specialists
- Wheel alignment
- Top brand quality batteries
- Puncture and Vulcanised repairs
- Number plates made while-you-wait

**TYREFAIR** has a comfortable lounge, where you can relax while the work is carried out and you can rest assured that we will treat your vehicle with the care and respect that you demand.

**WHY NOT CALL IN, OR TELEPHONE NOW FOR MORE INFORMATION?**

**KINROSS (01577) 865 656**

## **Alistair Hutcheson** **Floorlayer**

**All types of flooring supplied  
and installed**

Carpets, Carpet tiles, Domestic  
and Commercial Vinyls  
Karndean, Amtico, Laminates And  
Entrance Matting

Tel. 01577 862876

Mobile. 07842277590

Email - alijamhut@aol.com

Flatpack Furniture Assembled  
Prices from just £ 5.00



## **Woodlands** **Bed and Breakfast**

**Church Brae, Glenfarg**

[www.woodlands-bandb.co.uk](http://www.woodlands-bandb.co.uk)

Off Church Brae at end of lane below church

Ample car parking.

Two double bedrooms with king size beds

Resident's lounge

To book phone Cedric or Heather Wilkins

**01577 830300**



## **THINK-A-HEAD Hairdresser**

Hairdressing done in the comfort  
of your own home by an  
experienced stylist

**Cut & Blow Dry  
Tint, Foil Highlights  
Perms**

**Special Rates for  
OAPs and children**

**Call Elaine on 01577 840043**



*For all aspects of*  
**PIANO TUNING**  
*and repair*  
**David R. Watt**  
**(01577 830 345)**

Genuine Hardwood logs by  
the trailer-load or part load.  
Logs cut, split and delivered  
to suit individual needs.



For further  
details ring  
Ewan  
Cheape  
Glenfarg  
830 349

# Eles Building Services Ltd

## All Trades Building Contractor

Drunzie, Glenfarg, Perthshire, Scotland

Est. 2003

LARGEST ALL-TRADES BUILDING CONTRACTOR  
IN THE LOCAL AREA

~

SMALL JOBS, MILLION-POUND PROJECTS AND  
EVERYTHING IN BETWEEN UNDERTAKEN,  
DOMESTIC OR COMMERCIAL

~

FULL SERVICE FROM DESIGN STAGE TO  
MOVE-IN AND MAINTENANCE

NEW BUILDS, HOUSE EXTENSIONS AND INTERIOR DESIGN

~

FREE ESTIMATES GIVEN

~

SPECIALISTS IN ENVIRONMENTALLY  
FRIENDLY BUILDING TECHNIQUES

~

CONSTRUCTIONLINE REGISTERED  
MEMBERS OF THE SCOTTISH BUILDING FEDERATION

## WWW.ELESBUILDING.CO.UK



CALL Tony Linn – 07717 505401 | Brian Stewart – 07826 946 989 |  
01577 830845

Registered in Scotland No: SC248657

VAT Registration No: 817 3987 89

# **WEBSTER BUILDING SUPPLIES LTD**

*Building and  
Timber  
Supplies*

*Bricks, Blocks, Sand & Gravel, Decorative  
Aggregates, Roughcasting, Plasterboard,  
Pavers, Kerbs, Slabs, Fencing Materials,  
Timber, Plywoods, Drainage,  
Roofing Materials*



*Stockists of FLO GAS. Deliveries  
throughout Tayside and Fife.*

***Ladeside Yard, Stirling Road  
Milnathort KY13 9XR***

***Tel: 01577 864369 Fax: 01577 864046***



# Glenfarg



## BOSCH CAR SERVICE CENTRE

- \* Mot
- \* Servicing (including lease cars)
- \* All mechanical repairs
- \* Top quality branded parts



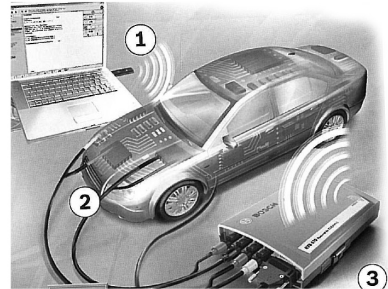
## DIAGNOSTIC EXPERTS

Dealer level diagnostics on most makes of vehicle

Reprogramming can be carried out on Landrover,  
Peugeot, Renault, Citroen, Alfa, Fiat, Rover, Vauxhall,  
Vag etc



# Garage



## TYRES AND ALIGNMENT

Tyres and exhausts fitted at very competitive prices  
Remember we can still match or even beat the 'fast fits' on many tyre and exhaust prices including fitting and balance.  
**Latest computerised 4-wheel alignment system (only 3 in Tayside)**

## AIR CONDITIONING SYSTEMS

checked and repaired (This should be done every 2 years)

**And remember... since block exemption came in October 2003, all cars (including new) can be serviced by us without invalidating the warranty. That could mean up to 50% saving on main dealer prices!**

**Phone for a fast and friendly estimate  
01577 830 633**

# General Information

## Doctors' Surgeries

Loch Leven Health Centre, Muirs, Kinross - **01577 862 112**

Daytime emergency number - **01577 865 252** - NHS 24 Out of Hours - **111**

The Surgery, Main Street, Bridge of Earn - **01738 812 000**

## Library



The van visits the village and stops at Main Street  
on alternate Tuesdays from 5th April at 12.30 to 14.15

## Bank Of Scotland

Stops at Glenfarg Hotel Wednesday 10.20am -10.50am



## Mobile Post Office

Stops outside the Joiner's workshop, Ladeside

Mon 11am-12noon;

Wed 11am-12noon;

Tues 12.45pm- 2.15pm;

Fri 12.45pm - 2.15pm



## Recycling Points

**Glenfarg:** Arngask School car park for cans, paper and glass

**Kinross:** Causeway Car Park, Sainsbury's, Station Road, for cans, glass, paper and textiles.

Bridgend Industrial Estate Open Mon-Fri 9am-7pm, Sat-Sun 9am-5pm

**Milnathort:** Thistle Inn, Black Loan for cans, glass and paper

Orwell & Portmoak Church Office for cans, plastic, paper and ink cartridges

**Perth:** Tesco, Edinburgh Road for cans, glass, paper, textiles and books

## Kerbside Recycling Service: Waste Collection Dates

### Glenfarg

**Green lidded bin** (Non-recyclable waste)

Fridays: April 1st, 15th & 29th, May 13th & 27th

**Blue lidded bin** (Paper, cardboard, cans, plastic)

Fridays: April 8th & 22nd, May 6th & 20th

**Brown lidded bin** (Garden & food waste):

Thursdays: April 14th & 28th, May 12th & 26th

### Duncrimvie

**Green lidded bin** (Non-recyclable waste):

Thursdays: April 14th & 28th, May 12th & 26th

**Blue lidded bin** (Paper, cardboard, cans, plastic):

Thursdays: April 7th & 21st, May 6th & 20th

**Brown lidded bin** (Garden & food waste):

Saturdays: April 2nd, 16th & 30th, May 14th & 28th

